

2001-02 Resident Undergraduate Tuition and Fees

(Washington State Higher Education Coordinating Board - January 2002)

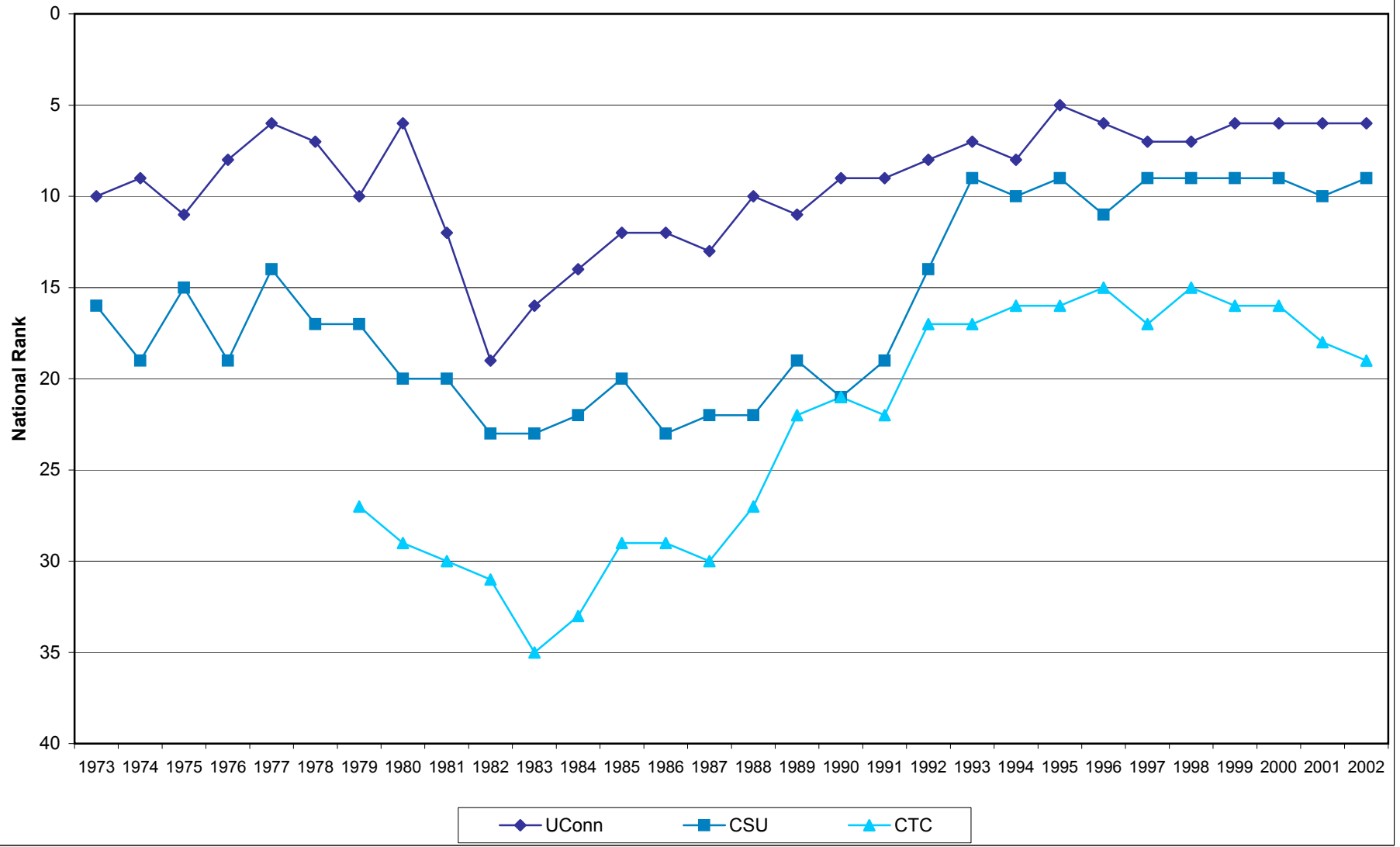
Universities			College and State Universities			Community Colleges		
STATE	Tuition/Fee	Rank	STATE	Tuition/Fees	Rank	STATE	Tuition/Fee	Rank
Vermont	\$8,665	1	New Jersey	\$5,762	1	Vermont	\$3,124	1
New Hampshire	\$7,693	2	New Hampshire	\$5,557	2	Minnesota	\$2,750	2
Pennsylvania	\$7,396	3	Vermont	\$5,132	3	New York	\$2,657	3
Michigan*	\$6,935	4	Ohio	\$5,058	4	Wisconsin	\$2,619	4
New Jersey	\$6,655	5	Pennsylvania	\$4,969	5	Indiana	\$2,540	5
Connecticut	\$5,824	6	Maryland	\$4,769	6	Iowa	\$2,422	6
Illinois	\$5,754	7	Michigan	\$4,501	7	New Jersey	\$2,399	7
Minnesota*	\$5,536	8	Illinois	\$4,215	8	Maryland	\$2,345	8
Rhode Island	\$5,365	9	Connecticut	\$4,165	9	Ohio	\$2,300	9
Maryland	\$5,341	10	New York	\$4,081	10	Massachusetts	\$2,279	10
Delaware	\$5,290	11	Indiana	\$3,947	11	Pennsylvania	\$2,277	11
Massachusetts	\$5,212	12	Virginia	\$3,841	12	Missouri	\$2,214	12
Maine	\$5,117	13	South Carolina	\$3,790	13	Alaska	\$2,148	13
Missouri	\$4,887	14	South Dakota	\$3,702	14	Maine	\$2,040	14
New York	\$4,815	15	Maine	\$3,690	15	North Dakota	\$2,040	14
Ohio	\$4,788	16	Oregon	\$3,650	16	Colorado	\$1,999	16
Indiana	\$4,734	17	Minnesota	\$3,561	17	Alabama	\$1,964	17
Virginia	\$4,236	18	Rhode Island	\$3,521	18	Oregon	\$1,934	18
Texas	\$4,226	19	Arkansas	\$3,477	19	Connecticut	\$1,888	19
Arkansas	\$4,158	20	Iowa	\$3,440	20	South Carolina	\$1,856	20
California	\$4,123	21	Missouri	\$3,436	21	Rhode Island	\$1,854	21
Wisconsin	\$4,086	22	Massachusetts	\$3,295	22	Montana	\$1,818	22
Oregon	\$4,071	23	Wisconsin	\$3,272	23	West Virginia	\$1,747	23
South Carolina	\$4,064	24	Alabama	\$3,261	24	Washington	\$1,743	24
Washington	\$3,983	25	Tennessee	\$3,246	25	Delaware	\$1,710	25
Tennessee	\$3,784	26	Montana	\$3,222	26	Tennessee	\$1,626	26
Nebraska	\$3,745	27	Mississippi	\$3,207	27	Utah	\$1,626	26
Kentucky	\$3,734	28	Washington	\$3,071	28	Michigan**	\$1,616	28
Montana	\$3,648	29	Nebraska	\$2,916	29	Illinois	\$1,580	29
South Dakota	\$3,642	30	North Dakota	\$2,909	30	Florida	\$1,525	30
Mississippi	\$3,626	31	Kentucky	\$2,897	31	Oklahoma	\$1,520	31
Iowa	\$3,522	32	Texas	\$2,841	32	Arkansas	\$1,503	32
Alaska	\$3,495	33	Idaho	\$2,732	33	Wyoming	\$1,501	33
Georgia	\$3,418	34	West Virginia	\$2,645	34	Georgia	\$1,486	34
Louisiana	\$3,395	35	Louisiana	\$2,578	35	Nebraska	\$1,480	35
Colorado	\$3,357	36	Florida	\$2,551	36	Kentucky	\$1,450	36
Alabama	\$3,292	37	Colorado	\$2,511	37	Kansas	\$1,446	37
North Dakota	\$3,261	38	Arizona	\$2,486	38	Idaho	\$1,406	38
Hawaii	\$3,253	39	Georgia	\$2,480	39	Louisiana	\$1,403	39
North Carolina	\$3,219	40	Kansas	\$2,424	40	Nevada	\$1,320	40
Utah	\$3,043	41	Nevada	\$2,295	41	Mississippi	\$1,278	41
New Mexico	\$3,026	42	North Carolina	\$2,255	42	Virginia	\$1,159	42
West Virginia	\$2,998	43	Utah	\$2,252	43	Texas	\$1,122	43
Oklahoma	\$2,963	44	Oklahoma	\$2,171	44	Hawaii	\$1,064	44
Kansas	\$2,884	45	New Mexico	\$2,042	45	North Carolina	\$992	45
Wyoming	\$2,807	46	California	\$1,897	46	Arizona	\$930	46
Idaho	\$2,720	47				New Mexico	\$750	47
Arizona	\$2,486	48				California	\$330	48
Florida	\$2,444	49						
Nevada	\$2,295	50						
National Average	\$4,260		National Average	\$3,385		National Average	\$1,766	

* Average of lower division and upper division charges.

** Michigan report only tuition.

National Ranking of Tuition & Fees

(Washington State Higher Education Coordinating Board - A National Comparison)



Tuition and Required Fees Undergraduate Rates

	In-State			Out-of-State		
	FY 2002	FY 2003	% Change	FY 2002	FY 2003	% Change
University of Connecticut ¹						
Commuter	\$ 5,824	\$ 6,154	5.7%	\$ 14,942	\$ 15,849	6.1%
Resident	12,122	12,696	4.7%	21,240	22,391	5.4%
Connecticut State University						
Commuter	4,153	4,531	9.1%	10,126	10,733	6.0%
Resident	10,239	10,889	6.3%	16,212	17,091	5.4%
Community Colleges ²	1,888	2,034	7.7%	5,816	6,062	4.2%
Charter Oak						
Associate Degree 1st Year	730	759	4.0%	941	979	4.0%
Bachelor Degree 1st Year	840	869	3.5%	1,051	1,089	3.6%
Bachelor Degree After 1st Year	483	502	3.9%	631	656	4.0%

1. UConn approved a midyear tuition increase. The Fall 2002 tuition increase is 3.9% while the Spring 2003 tuition increase is 8.75%.

2. The Community Colleges approved an increase to the College Services Fee in July 2002 effective for the Fall 2002.

CONNECTICUT HIGHER EDUCATION SYSTEM

Average Cost of Attendance*

	UConn			CSU			CTC System		
	FY 2002	FY 2003 Approved		FY 2002	FY 2003 Approved		FY 2002	FY 2003 Approved	
	Actual	Rate	% Inc.	Actual	Rate	% Inc.	Actual	Rate	% Inc.
Undergraduate In-State									
Tuition	\$4,448	\$4,730	6.3%	\$2,226	\$2,313	3.9%	\$1,680	\$1,764	5.0%
Technology Fee				150	200	33.3%			
Infrastructure Maintenance	258	268	3.9%						
University Fee				682	706	3.5%			
University General Fee	994	1,032	3.8%	977	1,184	21.2%	188	250	33.0%
Other Fees	124	124	0.0%	118	128	8.5%	20	20	0.0%
Tuition & Mandatory Fees	\$5,824	\$6,154	5.7%	\$4,153	\$4,531	9.1%	\$1,888	\$2,034	7.7%
Room	3,348	3,478	3.9%	3,425	3,581	4.6%			
Board	2,950	3,064	3.9%	2,661	2,777	4.3%			
TOTAL	\$12,122	\$12,696	4.7%	\$10,239	\$10,889	6.3%	\$1,888	\$2,034	7.7%
Undergraduate Out-of-State									
Tuition	\$13,566	\$14,425	6.3%	\$7,204	\$7,485	3.9%	\$5,232	\$5,292	1.1%
Technology Fee				150	200	33.3%			
Infrastructure Maintenance	258	268	3.9%						
University Fee				1,677	1,736	3.5%			
University General Fee	994	1,032	3.8%	977	1,184	21.2%	564	750	33.0%
Other Fees	124	124	0.0%	118	128	8.5%	20	20	0.0%
Tuition & Mandatory Fees	\$14,942	\$15,849	6.1%	\$10,126	\$10,733	6.0%	\$5,816	\$6,062	4.2%
Room	3,348	3,478	3.9%	3,425	3,581	4.6%			
Board	2,950	3,064	3.9%	2,661	2,777	4.3%			
TOTAL	\$21,240	\$22,391	5.4%	\$16,212	\$17,091	5.4%	\$5,816	\$6,062	4.2%

* Excluding books, transportation and miscellaneous expenses.

Other Fees:

UConn: Student Newspaper, Student Government, WHUS, Student Union, UConn TV, Transit Fee, Student Union Building Fee.

CSU: Student Activity Fee, Media Fee.

CTC: Student Activity Fee