

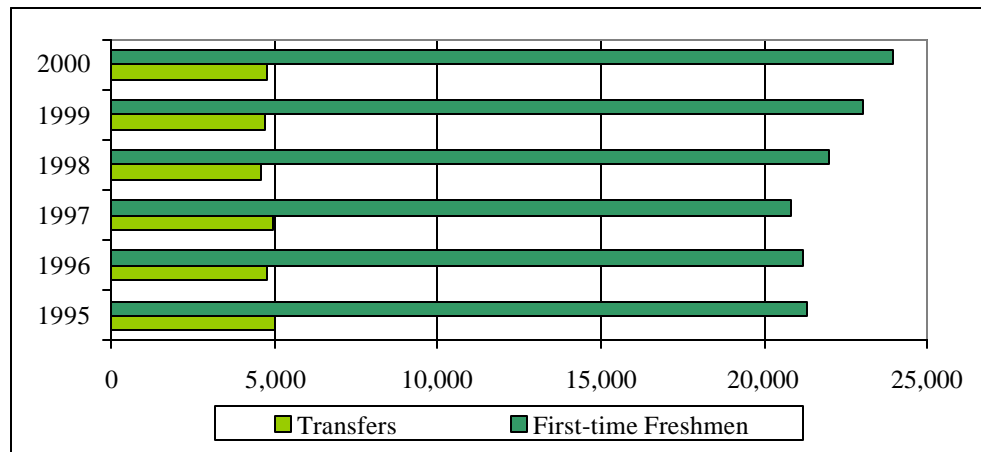


Undergraduate Student Transfer in Connecticut Higher Education

Magnitude of Transfer in Connecticut

- A total of 4,803 undergraduates transferred to a Connecticut public or independent college in fall 2000. This represents 4% of undergraduate enrollment (see Figure 1 and Table 1).*

Figure 1
Undergraduates at Connecticut Colleges and Universities



*Note that these statistics are a partial picture of transfer activity in Connecticut due to the lack of data from the community colleges and uneven reporting from other higher education institutions.

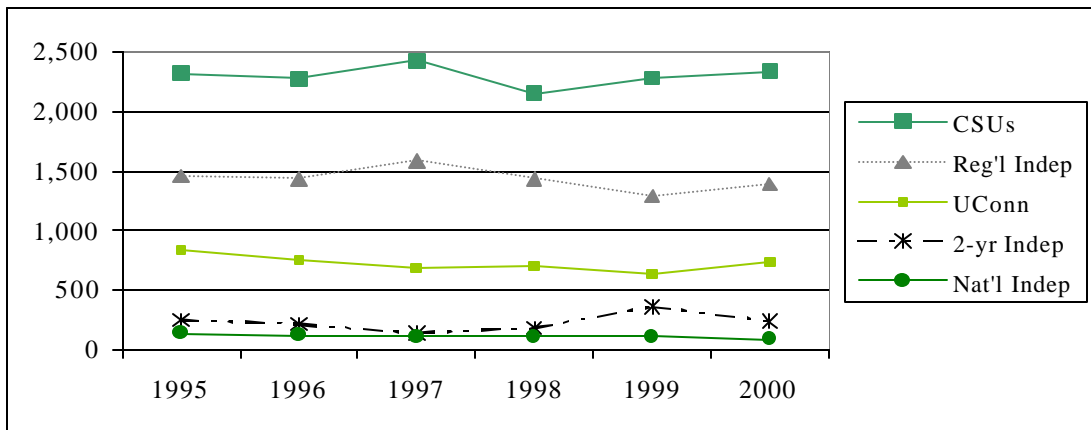
Table 1
Student Transfers to Connecticut Colleges and Universities

| | 1995 | 1996 | 1997 | 1998 | 1999 | 2000 | Change 95-00 |
|------------------------------------|-------|-------|-------|-------|-------|-------|-----------------|
| Total Transfers | 5,007 | 4,805 | 4,951 | 4,597 | 4,697 | 4,803 | -4% |
| % of Total Undergraduates | 4.0% | 4.0% | 4.1% | 3.8% | 3.8% | 3.8% | |
| Source of Transfer Students | | | | | | | |
| In-State | 2,674 | 2,156 | 2,441 | 2,220 | 2,260 | 2,419 | -10% |
| Out-of-State | 1,959 | 1,655 | 1,873 | 1,718 | 1,693 | 1,830 | -7% |
| Unidentified | 374 | 994 | 637 | 659 | 744 | 554 | 48% |

Overall Trends

- Over the past five years, the number of transfer students has fallen by 4%. The largest declines occurred at the four national independent institutions where transfer counts dropped 38% and at the University of Connecticut where transfer counts were down 11%. The number of transfer students rose only at Connecticut State University, albeit a slight increase of 1% (see Figure 2). Fewer numbers of transfer students may reflect less capacity given the growing number of “baby boomlet” students recently starting college.

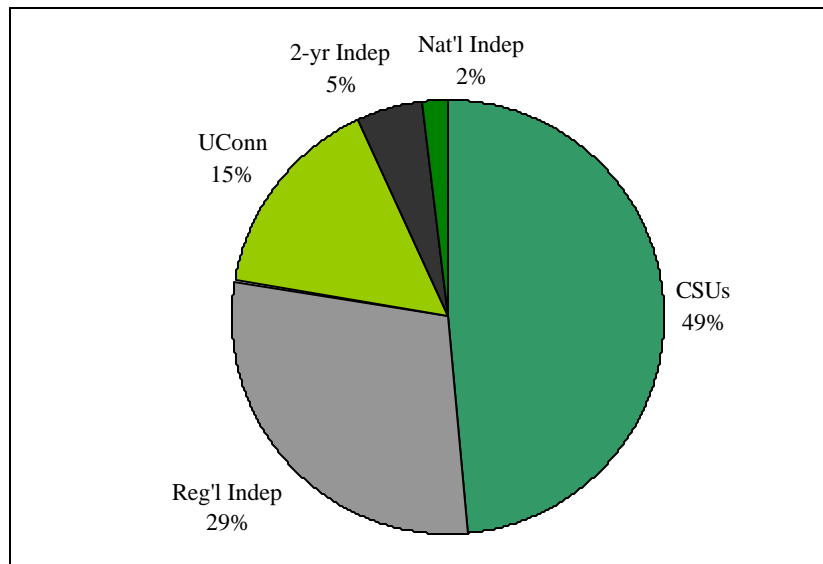
Figure 2
Transfer Trends by Sector
Connecticut Higher Education



Patterns of Transfer

- Of all Connecticut’s transfer students, just under half transferred to Connecticut State University, with another 30% opting for a regional independent institution (see Figure 3).
- About half of all Connecticut transfer students come from other Connecticut colleges. Another 40% originate from out-of-state institutions, and the remaining come from unidentified sources.

Figure 3
Share of Transfers by Sector
Connecticut Higher Education



In-State Student Transfer

- Transfer patterns among these students vary greatly by sector. At the national independents, only 15% were from other in-state colleges, whereas at the two-year independents, 84% came from other in-state schools.
- Of those students who transfer among in-state institutions, the majority — at least 60% — come from the community colleges.
- Among in-state transfer students, most (58%) went from 2-year to 4-year colleges, and another 34% transferred between 4-year schools. Only 6% of transfers went from a 4-year to a 2-year school.
- Across the state, 58% (1,408) of in-state transfers went from one public college to another. Some 27% transferred from a public to an independent. Only 4% transferred between independent institutions.
- Within the public sector, more than half (59%) of the public-to-public transfers went from a community college to Connecticut State University. Just over 10% went from a community college to the University of Connecticut, and another 10% went from the University of Connecticut to Connecticut State University. Just under 10% were internal transfers within the Connecticut State University System.

Out-of-State Student Transfer

- Among transfers to Connecticut colleges from out-of-state, about two-thirds are Connecticut residents returning home for college. At Connecticut State University, some 80% of these transfers are state residents; at the national independents these students account for 22%. In all, these returning students numbered 1,182 in 2000 — a small but important share of the nearly 10,000 Connecticut high-school graduates who leave the state each year to attend college elsewhere.

For additional information, contact John Pothier, Senior Associate for Research, at 860-947-1837 or jpothier@ctdhe.org.