

# Report

November 2000

Board of Governors for Higher Education  
Department of Higher Education  
State of Connecticut



## Fall 2000 College and University Enrollment in Connecticut

61 Woodland Street  
Hartford, Connecticut  
06105-2326

[www.ctdhe.org](http://www.ctdhe.org)

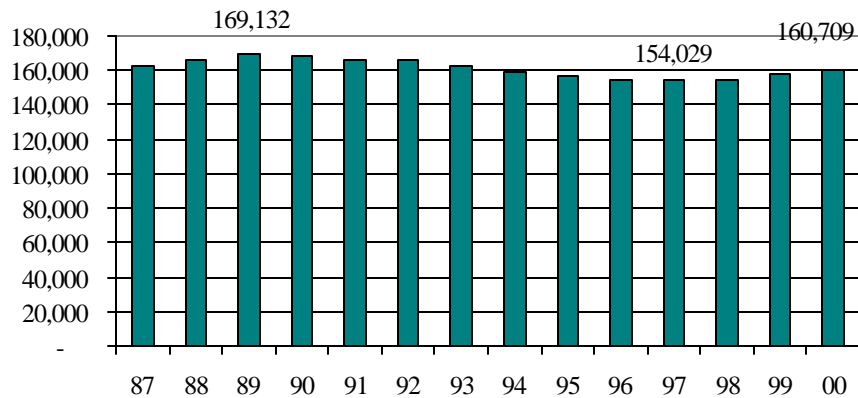
## Fall 2000 College and University Enrollment in Connecticut

This report analyzes fall 2000 headcount enrollment as reported by Connecticut's public and independent colleges and universities. It presents data on students who are enrolled for credit, with detail by full- and part-time status, level (undergraduate, graduate or first-professional), and first-time freshmen.

Connecticut public and independent colleges enrolled 160,709 students this fall, up 2,876 (1.8%) from last year. Although modest overall, this growth continues the gradual comeback from our low enrollment point four years ago.

- Fall headcount enrollment is still considerably below (5%) the peak enrollment of 169,132 attained in 1989. From this point, enrollment had dropped by almost 9%, or 15,103 students, by 1997. The next year, enrollment stabilized (edging up 0.1%) followed by more significant increases of 2.3% in 1999 and 1.8% this year.

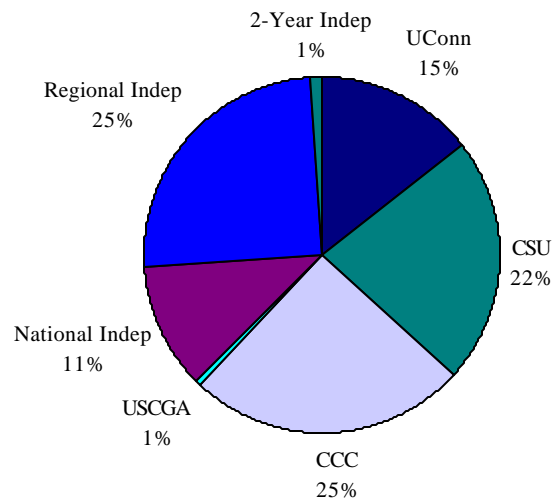
Figure 1  
Fall Headcount, Connecticut Colleges and Universities



- Enrollment at public institutions grew the most this year (2.8%), although these counts still lag behind anticipated growth levels.<sup>1</sup> Combined, these institutions enrolled 100,453 students for 62.5% of all students in Connecticut. As a result, changes in these institutions have a large effect on the total enrollment picture.
- Enrollment at the independent institutions as a whole remained virtually unchanged with an increase of only 95 students (0.2%) overall.

<sup>1</sup> See enrollment projection on pages 7 & 8.

Figure 2  
Fall 2000 Headcount by Sector



- Within the independent sector, however, counts at the National Independents (Connecticut College, Trinity, Wesleyan and Yale) remained stable and they rose at the Regional Independents by 714 students or 1.8%. The Two-Year Independents, in contrast, lost almost 24% of their enrollment (558 students). Historically, this latter group tends to be the most volatile.
- The overall increase in enrollment is spurred largely by growth in the number of undergraduates, which grew by 2,823 students, or by almost 2.3%. New freshmen grew by 941 or 4.0% to 24,225. Thus, total growth in undergraduate enrollment is only partially due to increases in new freshmen; the remainder is due to more returning students plus new transfers.
- Growth in new freshmen (941 more than last fall) accounted for more than 33% of the overall increase in undergraduates. Numbers of new freshmen have been climbing steadily and are now almost 15% higher than the 1997 low point of 21,071. They still, however, are below the peak of 30,716 in 1987. This phenomenon is consistent with the growth in the number of high school graduates, which has increased since 1997 and is expected to continue to grow through 2008 before declining again.
- Graduate enrollment, including the first-professional category, was up by just 62 students or less than 0.2%.
- Once final data on full-time and part-time enrollment splits are available, it is expected that full-time enrollment will have grown by about 4%, while part-time enrollment will have fallen by about 1%.
- There is considerable variation among individual institutions in enrollment performance, with some institutions posting significant percentage gains (such as Capital Community College, Albertus Magnus College, Quinnipiac University and University of Bridgeport) and

others showing considerable declines (such as Briarwood College, Rensselaer at Hartford, and Goodwin College).

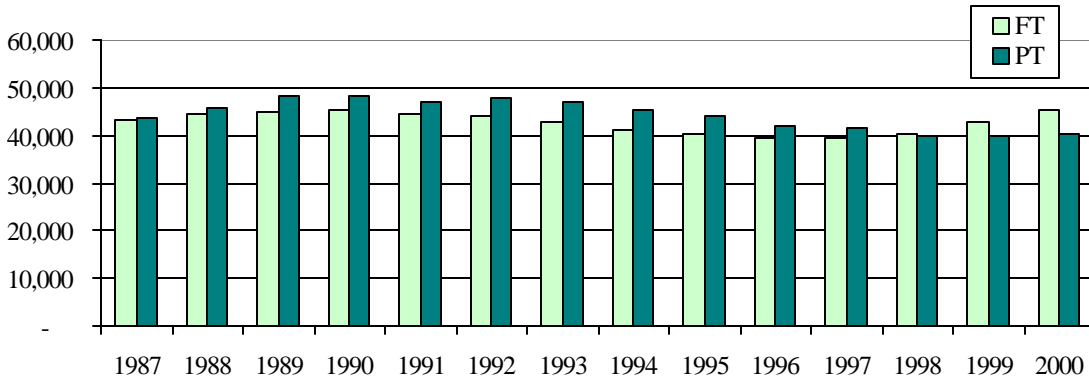
Table 1 provides detailed information from each institution for fall 2000, including full- and part-time headcount totals for each enrollment level for all but one independent institution whose data is still outstanding. Individual units and institutions are highlighted below, beginning with public institutions and followed by the independent institutions.

### **Public Colleges and Universities**

Enrollment at public institutions grew by 2,781 students, or 2.8%, for a total of 100,453. Within these institutions, 85,608 are undergraduates for 85.2% of the total, 13,730 are graduate students for 13.7%, and 1,115 are first-professional students for the remaining 1.1%.

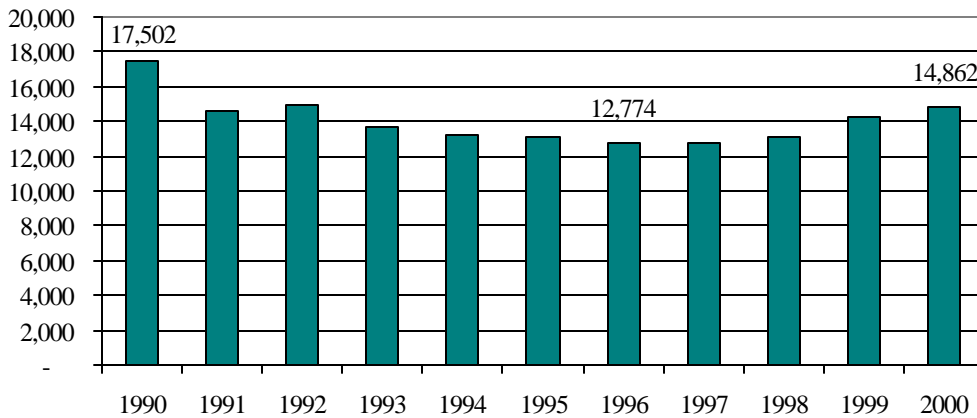
- Excluding the U. S. Coast Guard Academy, counts at state-supported institutions reached 99,576 students, an increase of 2.8%. Rates of change varied among the state system's three constituent units with the largest increases occurring at the Connecticut State University (3.8%), followed by the University of Connecticut (3.0%) and then the Community-Technical College System (1.9%).
- As with overall enrollment, increases in undergraduate counts were the major factor in enrollment growth in the public sector, with these totals growing by 2,745 students (3.3%) over last year.
- Within the undergraduate category, full-time students are driving the overall growth with a 4.8% increase compared to less than a 1% increase among part-timers. This general trend began in the mid-1990s and has continued.
- This is the third year in a row that the number of full-time undergraduates outnumbers the number of part-time students.
- The rise in the number of full-time students reflects the growing number of recent high school graduates; recent high school graduates who go to college tend to enroll on a full-time basis. It also, however, may signal an increase in the percentage of students choosing a Connecticut public institution over an out-of-state institution, and in the number of out-of-state students choosing a Connecticut institution.
- The decline in the number of part-time students is likely due to two major factors: fewer numbers of persons aged 25 to 44 who made up most of part-time enrollment through much of the 1990s, and a significantly improved economy with strikingly low unemployment rates.

Figure 3  
Full- and Part-Time Undergraduate Headcount,  
Connecticut Public Colleges & Universities



- Counts of new freshmen rose 4.2% or by 597 students within this sector.

Figure 4  
First-Time Freshmen in Connecticut Public Institutions

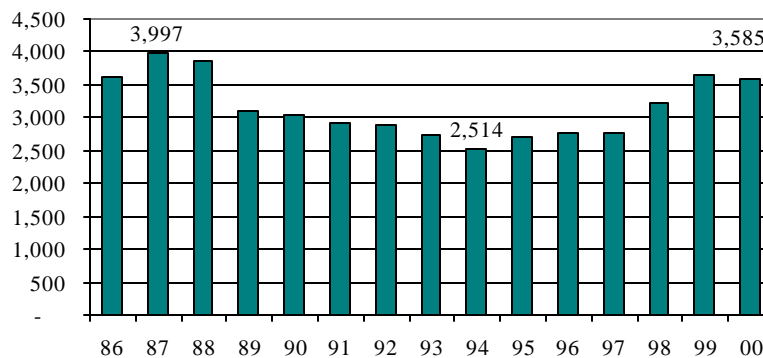


- Graduate enrollment in public institutions grew by only 66 students for a change of 0.5% from last fall. As with undergraduate enrollment, there are differences among the various institutions, as described below.
- First-professional enrollment at the publics, all of which is at the University of Connecticut (UConn), fell by 20 students from 1999 to 2000.

## University of Connecticut (UConn)

- UConn's total headcount enrollment grew by 682 (3.0%), from 22,739 to 23,421. This includes the Health Center, which was down by 12 for a 2.4% decrease to 486 students.
- The main campus at Storrs grew by 3.6% or by 672, representing 97% of the overall net increase.
- At the regional campuses, Stamford posted a 4.4% gain, while the Tri-Campus and Avery Point locations showed small drops.
- UConn's enrollment also is emerging from its 1997 low point when total enrollment was 21,747. Fall 2000 enrollment is 1,674 students (almost 8%) higher than fall 1997, but still 2,705 students (10%) below its peak year of 1989.
- Undergraduate enrollment at UConn totals 16,681, for a one-year increase of 6.0%. Most of this increase was among full-time undergraduates, whose numbers rose by 6.9% to 14,225. Part-time undergraduates at UConn total 2,456, an increase of just 1.2% over last year.
- First-time freshmen at UConn dropped slightly from 1999, going from 3,645 last fall to 3,585, a decrease of 1.6%. UConn's first-time freshmen enrollment had grown each year since 1994. Yet its total last year and again in 2000 is still lower than its peak of 3,997 in 1987.

Figure 5  
First-Time Freshmen, University of Connecticut



- UConn's graduate enrollment fell by 228 (3.8%) to 5,625 in fall 2000. Graduate enrollment at Storrs dropped by 218 (down 4%) to a total of 5,513; Avery Point graduate enrollment dropped by 13. At the other regional campuses, graduate enrollment rose very slightly. Overall, 48% of graduate students attend full-time, up from 47% last year and 45% two years ago.

- UConn's first-professional enrollment also dropped, although not significantly, from 1,135 to 1,115. The Health Center's enrollment total of 486 is slightly down from 1999, but within the variation that occurs from year to year.

### **Connecticut State University (CSU)**

- CSU enrollments rose 1,300 (3.8%), from 34,030 to 35,330 students.
- Despite the recent increase, CSU has not recovered from the enrollment trough it experienced during the 1990s. It reached its lowest enrollment in 1997 with 32,968 students. This year's enrollment is up by 2,362 (7%) from that low point, but remains 3,031 (8%) below the peak enrollment which occurred in 1989.
- All four campuses increased their enrollment, with the largest rise at Southern where 576 more students enrolled for a 5.0% increase.
- The growth in the number of undergraduates mirrored that of the whole, rising by 1,006 students for an increase of 3.8%. Full-time undergraduates rose by 795 (4.3%) while part-time undergraduates rose by 211 (2.7%).
- The range of growth in undergraduate enrollment varied considerably by state university:
  - Southern experienced a 6.0% increase in undergraduates, with 456 more students, balanced more heavily with full-time undergraduates.
  - Western had a 4.8% growth with 223 additional undergraduates, most of whom attend full-time.
  - Central's undergraduates rose by less than 2%, with an increase of 179 students who are mostly full-time.
  - Eastern posted a 3.2% gain, but its largest increase was among part-time students (up 97 or 7.8%), compared with just 51 additional full-time undergraduates for a 1.5% increase.
- New freshmen also mirrored overall growth rates, increasing from 4,347 to 4,514 (3.8%). CSU first-time freshmen have been climbing since 1993 with relatively steady year-to-year increases.
- CSU graduate enrollment increased by 294 (3.8%) to 8,105 graduate students, with large increases at Central (170 or 6.4%) and Southern (120 or 3.1%). Graduate enrollment at Western dropped by 6 (down 0.6%), and at Eastern increased by 10 (3.2%).

## **Community-Technical College System (CTC System)**

- Connecticut's CTC System campuses enrolled 760 or 1.9% more students than last year, going from 40,065 to 40,825. Most of the increase occurred among full time students, whose numbers rose by 518 or 5.0% from 1999. Since, however, just over one-fourth of this system's students are full-time, the impact on total enrollment was tempered. Part-time students rose by 242, for a 0.8% annual gain.
- Eight of the 12 community colleges increased their enrollment, ranging from 284 (10.3% increase) at Capital<sup>2</sup> to an increase of just one student at Three Rivers.
- The other four colleges experienced enrollment declines ranging from a decrease of 102 (6.0%) at Northwestern Connecticut to a loss of 8 students (0.8%) at Middlesex. Two of the four, Northwestern and Manchester, also experienced decreases in 1999.
- The CTC System reports more first-time freshmen this year, however fall 1999 figures are unreliable, and make a year-to-year comparison difficult. This fall's count of 6,462 is still 35% lower than its peak in 1990.

## **Charter Oak State College (COSC)**

- Counts at Charter Oak State College (COSC) grew from 1,429 to 1,459 for a 2.1% increase over fall 1999. Because most of these students are matriculated elsewhere, their total enrollment is listed separately and is not included in this analysis. All COSC students attend part-time.

## **U.S. Coast Guard Academy**

- The U.S. Coast Guard Academy enrolled 39 more students (or 4.7%) for a total of 877 students. All are full-time undergraduates.

## **Public Sector Enrollment Projections Compared to Actual**

In 1997 the Department updated its enrollment projections for the public institutions of higher education through 2020. The projections used four different methods, and the results anticipated headcount enrollment increases of approximately 1.5% to 2% annually from 1995 through 2006 before falling through 2012. The actual data for the past five years show a lag from the anticipated enrollment change, with three straight decreases (from 1995 to 1997) before beginning an upturn from 1998 to 1999 when there was a 2.7% increase. From 1999 to this year,

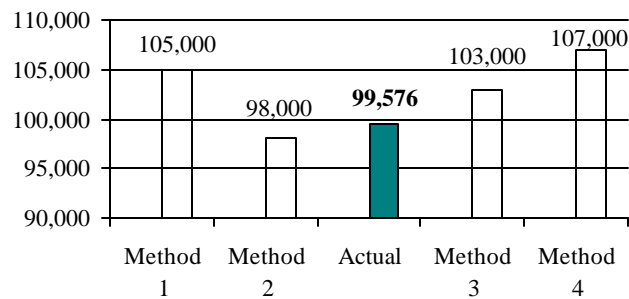
---

<sup>2</sup> The increase at Capital is due both to a real increase in enrollment and a difference from last year due to the method of counting. Capital reportedly did not take its 1999 enrollment extract at the typical time; thus its enrollment is not fully comparable from 1998 to 1999, and from 1999 to 2000. The multi-year trend shows Capital on a generally upward slope since its low point in 1995.

enrollment again increased, this time by 2.8%, bringing total enrollment in public institutions to just 235 students (0.2%) ahead of 1995 levels.

The four models predicted fall 2000 enrollment would range from a low of 98,000 to a high of 107,000. The actual enrollment of 99,576 in fall 2000 is closer to the low-end enrollment projection model.

Figure 6  
Actual vs. Projected 2000 Enrollment  
Connecticut Public Colleges and Universities



### **Independent Colleges and Universities**

Enrollment at independent institutions remained relatively stable, with 60,256 students for an increase of 95 students (0.3%). As a group, the independent institutions enroll 37.5% of all students in Connecticut. Undergraduate enrollment grew by only 71 students (0.2%) from 1999 to a total of 41,560. Graduate enrollment increased by 27 students to 16,394. First-professional enrollment totals 2,302, down 11 from fall 1999.

Patterns of enrollment and change from year-to-year among the types of independent institutions varied considerably.

### **National Independents**

- National Independents headcount enrollment fell by 61 students or -0.3%. This sector has experienced little variation in total enrollment over the past several years.
- Undergraduate enrollment fell by 117 for a drop of 1.0% to a total of 11,987. Among the National Independents, only Connecticut College increased its undergraduate enrollment. These institutions recruit from a national pool of students and typically remain quite stable, varying by only a few students from year-to-year except as they may define new enrollment goals.
- First-time freshmen dropped 2.9% from last fall to a total of 3,041. However, annual variations over the last decade have been very small, typically not more than this amount. In 1999, the total number of first-time freshmen reached a high for the decade.

- Graduate enrollment rose by 30 (0.6%) overall to 5,093 students. Only Yale experienced an increase; the other institutions posted small declines, with only Yale experiencing a net increase in graduate enrollment. Almost 90% of these students are full-time.
- First-professional enrollment, all of whom are at Yale University, rose by 26 students to 1,279.

### **Regional Independent Colleges and Universities (4-year)**

- Headcount enrollment at the Regional Independents increased by 676 students (1.8%) to a total of 40,059 in fall 2000. Enrollment in fall 2000 is 910 students below 1987 levels, a difference of 2.2%.
- Among the broad array of these institutions, four with highly specialized missions had decreases, including two seminaries (St. Basil's College and the Hartford Seminary), a graduate-only institution (Rensselaer at Hartford) and Lyme Academy of Fine Arts. These declines ranged from 241 students (11.8%) at Rensselaer to 3 (1.8%) at Lyme.
- In addition, the University of New Haven and Teikyo Post University posted declines of 114 (2.6%) and 66 students (4.6%), respectively.
- The largest increase occurred at the University of Bridgeport, which reported enrolling 2,973 students, an increase of 287 (10.7%) over last year. The next largest percentage increase was at Albertus Magnus College, which grew by 141 students (7.2%), and at Quinnipiac University, which grew by 430 students, or 7.1%. Holy Apostles College grew by 5.3% (10 students), and Mitchell College grew by 5.3% with its increase of 31 students.
- Undergraduate enrollment at the Regional Independents totals 27,773, an increase of 746 (2.8%) over last fall. Of the 14 institutions that enroll undergraduates, ten had increases in enrollment. Of these 14, most (11) had increases in full-time enrollment, while just four had increases in part-time enrollment.<sup>3</sup> As with the public institutions, it is likely that combinations of demographic, economic and institutional recruitment strategies play a role in these changes.
- Institutions with higher undergraduate enrollment were Albertus Magnus College, Fairfield University, Holy Apostles College, Mitchell College, Paier College of Art, Quinnipiac University, Sacred Heart University, St. Joseph College, University of Bridgeport and University of Hartford.
- Those with lower undergraduate enrollment are Lyme Academy, St. Basil's College, Teikyo Post University and the University of New Haven.

---

<sup>3</sup> Enrollment detail by full- and part-time status was not reported by the University of Bridgeport at the time of this writing. Only the total by level (undergraduate, graduate, and first professional) was reported.

- This sector reported 5,952 new freshmen<sup>4</sup>, up 617 or 11.6% from last year. Dramatic gains occurred at Teikyo Post, Fairfield and Quinnipiac Universities and the University of New Haven, each with increases in excess of 20%, and St. Joseph College with a 27% increase. Sacred Heart's new freshmen increased by 15.9% in one year. Of these, only Teikyo Post enrolled more new freshmen, yet experienced an overall decline in total undergraduates.
- Graduate enrollment at the Regional Independents totaled 11,301, a decrease of just 3 students from last fall. Increases occurred at four of these institutions: Albertus Magnus College (72 or 29.8%), Quinnipiac University (134 or 17.9%), Sacred Heart (47 or 2.9%) and University of Bridgeport (239 or 19.4%). New this year is The Graduate Institute with 12 students in its first program cohort.

### **Two-Year Independent Colleges**

- It is the five two-year Independent institutions where the most drastic enrollment change occurred on a percentage basis. Enrollment in this sector dropped by 558 students for an overall decrease of 23.7%. The only exception was St. Vincent's College, which increased by 55 students (26.2%).
- Goodwin College only began reporting collegiate enrollments in 1999, having been granted its license to operate as a college in 1998. Its short history, however, includes a decrease of 81 students (down 16.2%) from 1999 to this fall. The number of full-time students dropped, while part-time enrollment increased, yielding the net decrease and exhibit a trend counter to the system.
- Briarwood College and Gibbs College have both been operating for several years, but the long trend for each depicts volatility in enrollment. For example, Gibbs College reported fewer than 100 students through most of the 1990s, until jumping to 462 in 1999, before dropping this year to 554. At Briarwood College enrollment is a little less volatile, having risen somewhat steadily from 350 in 1989 until last year when it reported 627 students before dropping this year to 518.
- Two-year independent institutions reported 370 first-time freshmen this fall, an increase of 3.9% from 1999.

---

<sup>4</sup> These figures do not include the University of Bridgeport for 1999 or 2000.

## **Summary**

Total enrollment increased in fall 2000 compared with fall 1999 but remains below the peak year of 1989. There are 160,709 students enrolled in colleges and universities in Connecticut, 2,876 (1.8%) more than last year. Growth in undergraduate enrollment has largely driven the change, as graduate enrollment grew only slightly and first-professional enrollment fell slightly.

On the whole, public institutions enroll the most students and therefore changes among these institutions have larger bearing on the statewide total. Enrollment at public colleges and universities rose faster than at the independent colleges and universities. Public institutions enroll 100,453 students, a gain of 2,791 or 2.9%. Independent institutions enroll 60,256 students, representing an annual increase of 83 or 0.1%. Considerable variation exists among the independent institutions, with stability at the National Independents, some variation among the Regional Independents, and considerable change among the Two-Year Independents.

R:\Enrollment statistics\Jan's\01 Fall 2000 College and University Enrollment in Connecticut2.doc; 11/13/00

Final Enrollment  
Fall 2000  
Connecticut Colleges and Universities

	Undergraduate			Graduate			First-Professional			Fall 2000 Total Enrollment			Fall 1999 Total	Change	Percent Change
	Full-Time	Part-Time	Total	Full-Time	Part-Time	Total	Full-Time	Part-Time	Total	Full-Time	Part-Time	Total			
<b>PUBLIC INSTITUTIONS</b>															
<i>University of Connecticut</i>	14,225	2,456	16,681	2,699	2,926	5,625	893	222	1,115	17,817	5,604	23,421	22,739	682	3.0%
Storrs	12,314	937	13,251	2,699	2,814	5,513	413	216	629	15,426	3,967	19,393	18,721	672	3.6%
Avery Point	344	263	607		17	17				344	280	624	632	-8	-1.3%
Tri-Campus	1084	742	1,826		29	29				1,084	771	1,855	1,870	-15	-0.8%
Stamford	483	514	997		66	66				483	580	1,063	1,018	45	4.4%
Health Center							480	6	486	480	6	486	498	-12	-2.4%
<i>Connecticut State Universities</i>	19,182	8,043	27,225	1,375	6,730	8,105	0	0		20,557	14,773	35,330	34,030	1,300	3.8%
Central	6,375	3,068	9,443	529	2,280	2,809				6,904	5,348	12,252	11,903	349	2.9%
Eastern	3,479	1,342	4,821	43	281	324				3,522	1,623	5,145	4,987	158	3.2%
Southern	6,010	2,070	8,080	781	3,266	4,047				6,791	5,336	12,127	11,551	576	5.0%
Western	3,318	1,563	4,881	22	903	925				3,340	2,466	5,806	5,589	217	3.9%
<i>Community Colleges</i>	10,887	29,938	40,825							10,887	29,938	40,825	40,065	760	1.9%
Asnuntuck	390	1,460	1,850							390	1,460	1,850	1,719	131	7.6%
Capital	573	2,477	3,050							573	2,477	3,050	2,766	284	10.3%
Gateway	1,060	3,097	4,157							1,060	3,097	4,157	4,151	6	0.1%
Housatonic	861	3,041	3,902							861	3,041	3,902	3,829	73	1.9%
Manchester	1,714	3,421	5,135							1,714	3,421	5,135	5,192	-57	-1.1%
Middlesex	581	1,728	2,309							581	1,728	2,309	2,317	-8	-0.3%
Naugatuck Valley	1,681	3,435	5,116							1,681	3,435	5,116	4,864	252	5.2%
Northwestern CT	398	1,198	1,596							398	1,198	1,596	1,698	-102	-6.0%
Norwalk	1,456	3,921	5,377							1,456	3,921	5,377	5,220	157	3.0%
Quinebaug Valley	392	955	1,347							392	955	1,347	1,281	66	5.2%
Three Rivers	884	2,690	3,574							884	2,690	3,574	3,573	1	0.0%
Tunxis	897	2,515	3,412							897	2,515	3,412	3,455	-43	-1.2%
<b>TOTAL, STATE INSTITUTIONS</b>	<b>44,294</b>	<b>40,437</b>	<b>84,731</b>	<b>4,074</b>	<b>9,656</b>	<b>13,730</b>	<b>893</b>	<b>222</b>	<b>1,115</b>	<b>49,261</b>	<b>50,315</b>	<b>99,576</b>	<b>96,834</b>	<b>2,742</b>	<b>2.8%</b>
U.S. Coast Guard Academy	877		877						0	877	0	877	838	39	4.7%
<b>TOTAL, PUBLIC INSTITUTIONS</b>	<b>45,171</b>	<b>40,437</b>	<b>85,608</b>	<b>4,074</b>	<b>9,656</b>	<b>13,730</b>	<b>893</b>	<b>222</b>	<b>1,115</b>	<b>50,138</b>	<b>50,315</b>	<b>100,453</b>	<b>97,672</b>	<b>2,781</b>	<b>2.8%</b>

Charter Oak State College enrolled 1,459 part-time students, most of whom are enrolled elsewhere in the system and are counted above. Those 1,459 represent a 2% increase over Fall 2000.

Final Enrollment  
Fall 2000  
Connecticut Colleges and Universities

	Undergraduate			Graduate			First-Professional			Fall 2000 Total Enrollment			Fall 1999 Total	Change	Percent Change
	Full-Time	Part-Time	Total	Full-Time	Part-Time	Total	Full-Time	Part-Time	Total	Full-Time	Part-Time	Total			
<b>INDEPENDENT INSTITUTIONS</b>															
<i>National Independents</i>	11,654	333	11,987	4,584	509	5,093	1,255	24	1,279	17,493	866	18,359	18,420	-61	-0.3%
Connecticut College	1,700	114	1,814	18	24	42				1,718	138	1,856	1,820	36	2.0%
Trinity College	1,929	171	2,100	7	139	146				1,936	310	2,246	2,371	-125	-5.3%
Wesleyan University	2,706	16	2,722	184	252	436				2,890	268	3,158	3,200	-42	-1.3%
Yale University	5,319	32	5,351	4,375	94	4,469	1,255	24	1,279	10,949	150	11,099	11,029	70	0.6%
<i>Regional Independents</i>	NA	NA	27,773	NA	NA	11,301	NA	NA	1,023	NA	NA	40,097	39,383	714	1.8%
Albertus Magnus College	1,592	199	1,791	281	33	314				1,873	232	2,105	1,964	141	7.2%
Fairfield University	3,401	772	4,173	169	846	1,015				3,570	1,618	5,188	5,127	61	1.2%
Graduate Institute, The				12		12				12	-	12	N/A	N/A	N/A
Hartford Seminary				11	112	123				11	112	123	192	-69	-35.9%
Holy Apostles College	48	20	68		84	84	47		47	95	104	199	189	10	5.3%
Lyme Academy of Fine Arts	58	110	168							58	110	168	171	-3	-1.8%
Mitchell College	508	113	621							508	113	621	590	31	5.3%
Paier College of Art, Inc.	159	123	282							159	123	282	276	6	2.2%
Quinnipiac University	4,415	428	4,843	454	429	883	495	256	751	5,364	1,113	6,477	6,047	430	7.1%
Rensselaer at Hartford				98	1,709	1,807				98	1,709	1,807	2,048	-241	-11.8%
Sacred Heart University	2,672	1,357	4,029	457	1,198	1,655				3,129	2,555	5,684	5,528	156	2.8%
St. Basil's College	28		28							28	-	28	58	-30	-51.7%
St. Joseph College	690	537	1,227	92	504	596				782	1,041	1,823	1,740	83	4.8%
St. Thomas Seminary	6		6	1		1				7	-	7	N/A	N/A	N/A
Teikyo Post University	655	701	1,356							655	701	1,356	1,422	-66	-4.6%
University of Bridgeport	NA	NA	1,277	NA	NA	1,471	NA	NA	225	NA	NA	2,973	2,686	287	10.7%
University of Hartford	4,168	1,199	5,367	540	988	1,528				4,708	2,187	6,895	6,882	13	0.2%
University of New Haven	1,605	932	2,537	676	1,136	1,812				2,281	2,068	4,349	4,463	-114	-2.6%
<i>Two-Year Independents</i>	1,344	456	1,800							1,344	456	1,800	2,358	-558	-23.7%
Briarwood College	302	216	518							302	216	518	627	-109	-17.4%
Gibbs College	554		554							554	-	554	927	-373	-40.2%
Goodwin College	384	34	418							384	34	418	499	-81	-16.2%
International College of Hospitality Management	45		45							45	-	45	95	-50	-52.6%
St. Vincent's College	59	206	265							59	206	265	210	55	26.2%
<b>TOTAL, INDEPENDENTS</b>	NA	NA	<b>41,560</b>	NA	NA	<b>16,394</b>	NA	NA	<b>2,302</b>	NA	NA	<b>60,256</b>	<b>60,161</b>	<b>95</b>	<b>0.2%</b>
<b>TOTAL, ALL INSTITUTIONS</b>	NA	NA	<b>127,168</b>	NA	NA	<b>30,124</b>	NA	NA	<b>3,417</b>	NA	NA	<b>160,709</b>	<b>157,833</b>	<b>2,876</b>	<b>1.8%</b>