



# Report

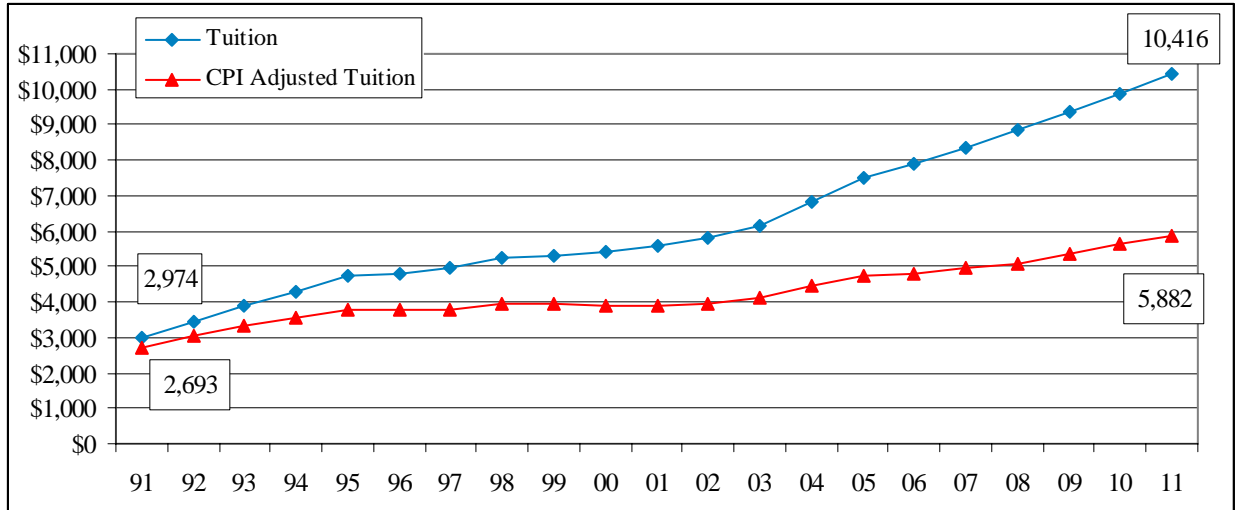
## CONNECTICUT PUBLIC HIGHER EDUCATION 2011 TUITION AND FEES

	<u>In-State</u>			<u>Out-of-State</u>		
	<u>FY 2010</u>	<u>FY 2011</u>	<u>% Change</u>	<u>FY 2010</u>	<u>FY 2011</u>	<u>% Change</u>
<b>University of Connecticut</b>						
Commuter	\$9,886	\$10,416	5.4%	\$25,486	\$26,880	5.5%
Resident	20,006	21,198	6.0%	35,606	37,662	5.8%
<b>Connecticut State University System</b>						
Commuter	7,567	8,043	6.3%	17,258	18,408	6.7%
Resident	17,048	17,997	5.6%	26,739	28,361	6.1%
<b>Connecticut Community College System</b>						
	3,200	3,406	6.4%	9,560	10,178	6.5%
<b>Charter Oak State College</b>						
Associate Degree	1,335	1,361	1.9%	1,670	1,705	2.1%
Bachelor Degree 1st Year	1,130	1,156	2.3%	1,465	1,500	2.4%
Bachelor Degree > 1st Year	695	707	1.7%	920	938	2.0%

For the 2011 academic year, tuition and fee increases range from a low of 1.7 percent for returning in-state bachelor's degree students at Charter Oak State College to 6.7 percent for an out-of-state commuter student at the Connecticut State University System. Nationally, public sector tuition and fee increases averaged 6.5 percent at four-year institutions and 7.3 percent at two-year institutions for 2010. Those increases were essentially the same as 2009 with many public institutions across the nation relying on stimulus funding to keep increases down. Increases at Connecticut schools have been lower than the national average for the last three years and are anticipated to remain on the low side for 2011.

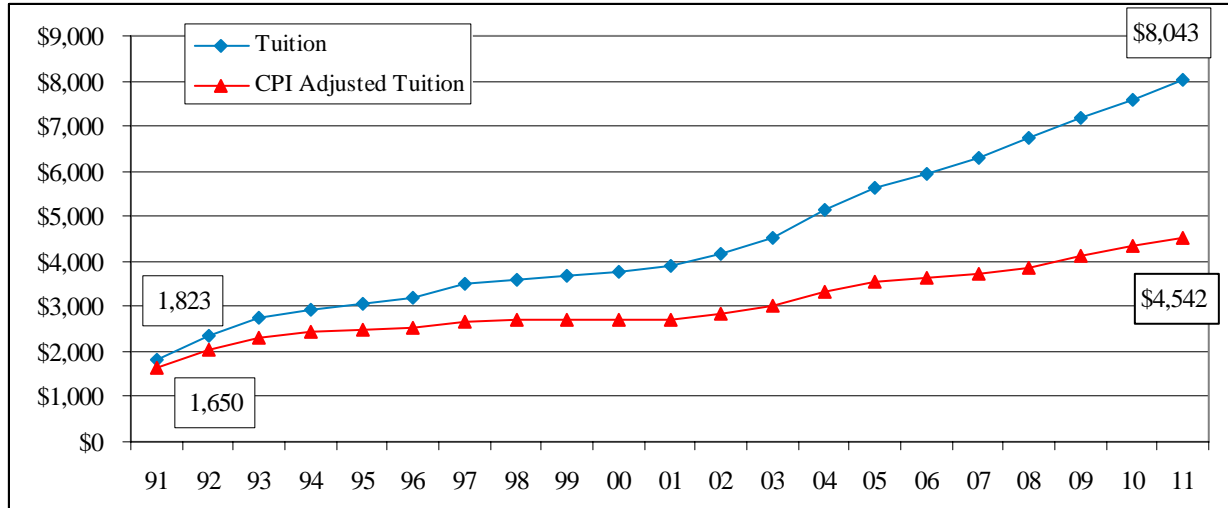
From 2006 to 2011, tuition and fees for in-state undergraduates have increased 36 percent at the Connecticut State University System, 34 percent at the Connecticut Community College System, and 32 percent at the University of Connecticut. With the exception of Charter Oak State College, all of the planned 2011 increases are above the Higher Education Price Index (HEPI) rate for 2009 of 2.3 percent and the corresponding CPI rate of 1.4 percent. However, Board of Trustees' approved tuition and fee increases are actually lower than regional and national trends.

## University of Connecticut In-State Tuition and Fee Growth 1991 – 2011



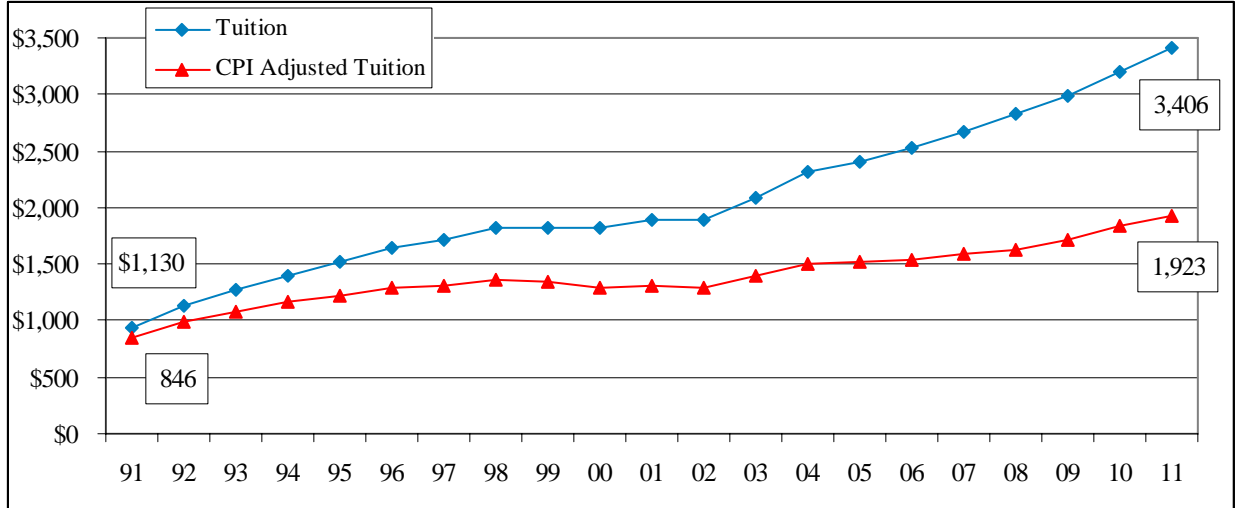
<u>Fiscal Year</u>	<u>Tuition &amp; Fees</u>	<u>Annual Increase</u>	<u>Cumulative Increase</u>	<u>CPI Adjusted Cumulative Increase</u>
1991	2,974	13.0%	29.7%	17.4%
1992	3,463	16.4%	51.0%	32.5%
1993	3,902	12.7%	70.2%	44.7%
1994	4,290	9.9%	87.1%	55.3%
1995	4,712	9.8%	105.5%	65.7%
1996	4,810	2.1%	109.8%	64.6%
1997	4,974	3.4%	116.9%	65.5%
1998	5,242	5.4%	128.6%	71.3%
1999	5,330	1.7%	132.4%	71.3%
2000	5,404	1.4%	135.7%	68.7%
2001	5,596	3.6%	144.0%	68.9%
2002	5,824	4.1%	154.0%	72.7%
2003	6,154	5.7%	168.4%	78.7%
2004	6,812	10.7%	197.1%	93.5%
2005	7,490	10.0%	226.6%	106.6%
2006	7,912	5.6%	245.1%	110.2%
2007	8,362	5.7%	264.7%	116.5%
2008	8,842	5.7%	285.6%	120.8%
2009	9,338	5.6%	307.2%	133.2%
2010	9,886	5.9%	331.1%	146.9%
2011	10,416	5.4%	354.3%	156.5%

## Connecticut State University System In-State Tuition and Fee Growth 1991 – 2011



<u>Fiscal Year</u>	<u>Tuition &amp; Fees</u>	<u>Annual Increase</u>	<u>Cumulative Increase</u>	<u>CPI Adjusted Cumulative Increase</u>
1991	1,823	14.9%	20.7%	9.3%
1992	2,345	28.7%	55.3%	36.3%
1993	2,732	16.5%	81.0%	54.0%
1994	2,912	6.6%	92.9%	60.1%
1995	3,075	5.6%	103.7%	64.2%
1996	3,194	3.9%	111.6%	66.0%
1997	3,500	9.6%	131.9%	76.9%
1998	3,601	2.9%	138.6%	78.8%
1999	3,667	1.8%	142.9%	79.0%
2000	3,749	2.2%	148.4%	77.8%
2001	3,910	4.3%	158.9%	79.3%
2002	4,153	6.2%	175.1%	87.1%
2003	4,531	9.1%	200.2%	99.8%
2004	5,121	13.0%	239.3%	121.0%
2005	5,611	9.6%	271.6%	135.1%
2006	5,936	5.8%	293.2%	139.6%
2007	6,284	5.9%	316.3%	147.2%
2008	6,736	7.2%	346.2%	155.5%
2009	7,180	6.6%	375.7%	172.3%
2010	7,566	5.4%	401.2%	187.0%
2011	8,043	6.3%	432.8%	200.9%

## Connecticut Community College System In-State Tuition and Fee Growth 1991 – 2011



<u>Fiscal Year</u>	<u>Tuition &amp; Fees</u>	<u>Annual Increase</u>	<u>Cumulative Increase</u>	<u>CPI Adjusted Cumulative Increase</u>
1991	934	6.1%	18.2%	7.0%
1992	1,130	21.0%	43.0%	25.5%
1993	1,276	12.9%	61.5%	37.4%
1994	1,398	9.6%	77.0%	46.9%
1995	1,520	8.7%	92.4%	55.1%
1996	1,646	8.3%	108.4%	63.5%
1997	1,722	4.6%	118.0%	66.3%
1998	1,814	5.3%	129.6%	72.1%
1999	1,814	0.0%	129.6%	69.2%
2000	1,814	0.0%	129.6%	64.4%
2001	1,886	4.0%	138.7%	65.3%
2002	1,888	0.1%	139.0%	62.5%
2003	2,088	10.6%	164.3%	76.0%
2004	2,310	10.6%	192.4%	90.5%
2005	2,406	4.2%	204.6%	92.6%
2006	2,536	5.4%	221.0%	95.6%
2007	2,672	5.4%	238.2%	100.8%
2008	2,828	5.8%	258.0%	105.0%
2009	2,984	5.5%	277.7%	116.3%
2010	3,200	7.2%	305.1%	131.9%
2011	3,406	6.4%	331.1%	143.5%

## Universities In-State Undergraduate Tuition & Fees FY 2009-10

### National Ranking

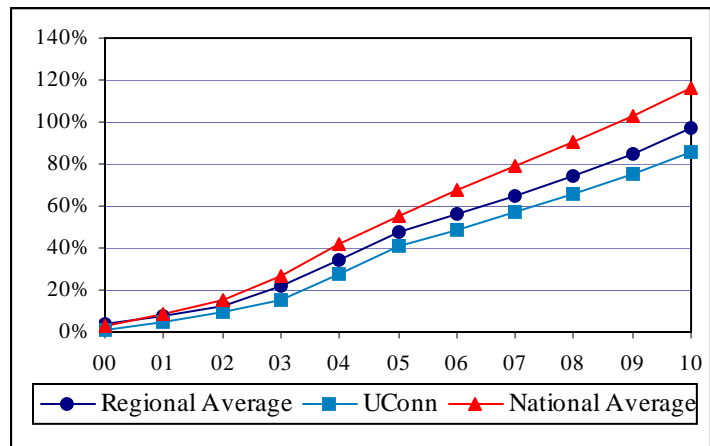
Pennsylvania	\$14,416	1
Vermont	\$13,554	2
New Hampshire	\$12,743	3
Illinois	\$12,660	4
New Jersey	\$11,886	5
Michigan	\$11,659	6
Minnesota	\$11,293	7
Massachusetts	\$10,634	8
<b>Connecticut</b>	<b>\$9,886</b>	<b>9</b>
Virginia	\$9,672	10
Maine	\$9,626	11
Rhode Island	\$9,528	12
Delaware	\$9,486	13
California	\$9,434	14
South Carolina	\$9,156	15
Texas	\$8,842	16
Ohio	\$8,706	17
Indiana	\$8,663	18
Missouri	\$8,501	19
Wisconsin	\$8,310	20
National Average	\$7,963	

The University of Connecticut consistently ranks among the top 10 most expensive state universities in terms of tuition and fees on both a national and regional basis. However, annual increases since 2000 have produced a growth rate that remains below the average growth of both the region and the nation. When Connecticut experienced somewhat less restrictive budgetary problems than the rest of the country during the economic downturn in 2003, UConn's ranking dropped to ninth nationally as tuition increases reached double digits in other states. For 2010, UConn's tuition and fees increased 5.9 percent against the national average growth of 6.4 percent among flagship universities. UConn's growth rate also was below the average regional tuition growth rate of 6.6 percent for 2010. Since the top three institutions in the region are effectively semi-privatized with state support representing an increasingly smaller portion of their revenues, it is unlikely UConn will move from its position in the center of the region. However, the current economic downturn has once again begun to affect tuition increases and the bottom four schools in the region showed much larger increases than usual in 2010. With a 5.4 percent increase in 2011, UConn should compare favorable to the rest of the region.

### Regional Ranking

Pennsylvania	\$14,416	1
Vermont	\$13,554	2
New Hampshire	\$12,743	3
New Jersey	\$11,886	4
Massachusetts	\$10,634	5
<b>Connecticut</b>	<b>\$9,886</b>	<b>6</b>
Maine	\$9,626	7
Rhode Island	\$9,528	8
Delaware	\$9,486	9
New York	\$7,014	10
Regional Average	\$10,877	

### Cumulative Change FY 2000-2010



Source: 2009-10 Tuition & Fee Rates: A National Comparison – Washington State Higher Education Coordinating Board (April 2010).

## State Universities In-State Undergraduate Tuition & Fees FY 2009-10

### National Ranking

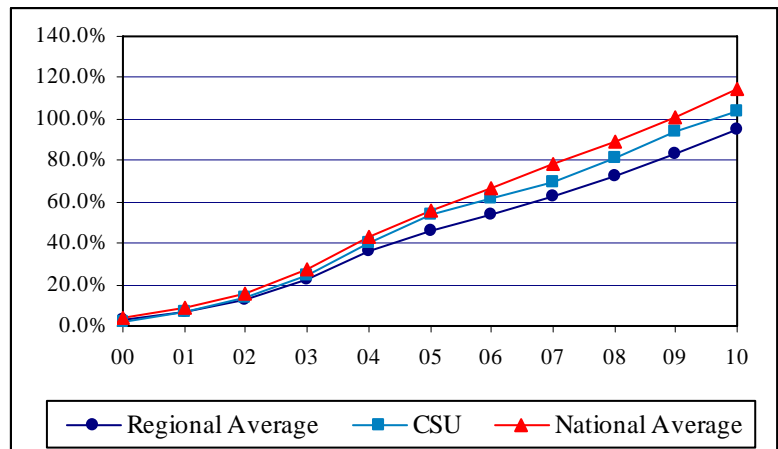
New Jersey	\$11,133	1
Illinois	\$9,933	2
New Hampshire	\$9,139	3
Michigan	\$8,700	4
Ohio	\$8,387	5
Vermont	\$8,196	6
South Carolina	\$7,960	7
Virginia	\$7,683	8
Indiana	\$7,628	9
Maryland	\$7,533	10
<b>Connecticut</b>	<b>\$7,485</b>	<b>11</b>
Massachusetts	\$7,348	12
Pennsylvania	\$7,345	13
Maine	\$6,759	14
Arizona	\$6,734	15
Iowa	\$6,636	16
Kentucky	\$6,597	17
South Dakota	\$6,550	18
Oregon	\$6,511	19
Rhode Island	\$6,408	20
National Average	6,257	

The Connecticut State University System has ranked among the most expensive state university systems, in terms of tuition and fees on both a national and regional basis. A tuition freeze in 1999 and 2000 brought the cumulative increase below the national and regional rates of growth for the first time, and only since 2006 has the rate of growth settled comfortably below the national average. Increases remain higher than the regional average and have pulled away over the last three years resulting in a move up to fourth place regionally and eleventh place nationally in 2009. CSUS's tuition and fee increase of 5.4 percent in 2010 fell below the national average of 6.6 percent and the regional average of 6.4 percent, but the largest increases were at the schools with lower tuition and fees so that costs came closer together while rankings remained relatively fixed. Despite the relatively low increase in 2010, the CSUS tuition and fees now above the regional average for the first time. With a 6.3 percent increase slated for 2011 and mounting pressure nationally, CSUS may be able to hold its position outside the top ten nationally, and maintain its position regionally.

### Regional Ranking

New Jersey	\$11,133	1
New Hampshire	\$9,139	2
Vermont	\$8,196	3
<b>Connecticut</b>	<b>\$7,485</b>	<b>4</b>
Massachusetts	\$7,348	5
Pennsylvania	\$7,345	6
Maine	\$6,759	7
Rhode Island	\$6,408	8
New York	\$6,027	9
Regional Average	\$7,760	

### Cumulative Percentage Change FY 2000-2010



Source: 2009-10 Tuition & Fee Rates: A National Comparison – Washington State Higher Education Coordinating Board (April 2010).

## Connecticut Community College System In-State Undergraduate Tuition & Fees FY 2009-10

### National Ranking

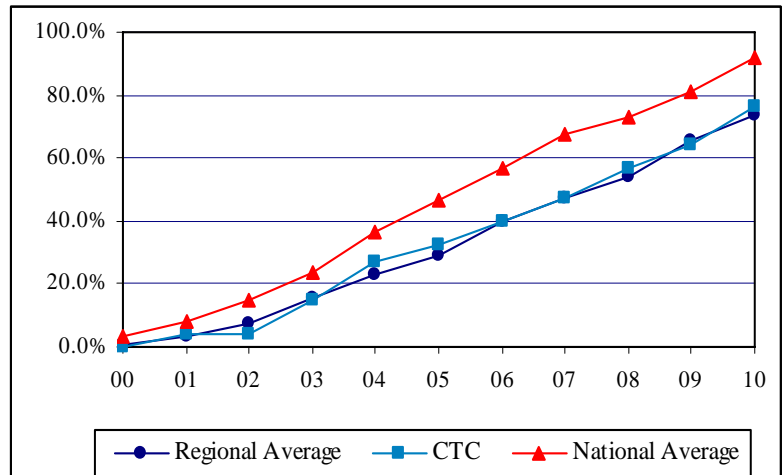
Vermont	\$4,776	1
Minnesota	\$4,697	2
Wisconsin	\$4,567	3
Alaska	\$4,315	4
Massachusetts	\$4,305	5
New York	\$4,057	6
Iowa	\$3,842	7
North Dakota	\$3,808	8
Kentucky	\$3,750	9
South Carolina	\$3,740	10
New Jersey	\$3,701	11
Oregon	\$3,567	12
Missouri	\$3,521	13
Ohio	\$3,440	14
Pennsylvania	\$3,427	15
Rhode Island	\$3,376	16
Maryland	\$3,310	17
Montana	\$3,217	18
Maine	\$3,204	19
<b>Connecticut</b>	<b>\$3,200</b>	<b>20</b>
National Average	\$2,962	

The Connecticut Community College System ranks 8th in the region and 20th in the nation. Since 2000, the Connecticut and regional tuition and fees increase rates have been much the same and consistently lower than the national average increase. This has allowed the community colleges to stay just above the middle in cost nationally and nearly at the bottom of costs regionally. With an increase in 2010 that was more than one point above the national average of six percent, the community colleges have once again maintained this ranking despite growth that was higher than 14 states ranked above them. The community colleges' 7.3 percent growth rate also was higher than the regional average of five percent. The number eight position was held by a tuition rate that was only four dollars below Maine's. Connecticut had the third highest growth rate in the region for 2010, exceeded only by Massachusetts and Rhode Island. Nationally, only those two regional states plus Oregon and Ohio exceeded Connecticut's increase. The 6.4 percent increase in the full-time rate for 2011 is a full point lower than 2010, and may be sufficiently low to maintain the rankings for another year in an economy that is limiting state support.

### Regional Ranking

Vermont	\$4,776	1
Massachusetts	\$4,305	2
New York	\$4,057	3
New Jersey	\$3,701	4
Pennsylvania	\$3,427	5
Rhode Island	\$3,376	6
Maine	\$3,204	7
<b>Connecticut</b>	<b>\$3,200</b>	<b>8</b>
Delaware	\$2,816	9
Regional Average	\$3,651	

### Cumulative Percentage Change FY 2000-2010



Source: 2009-10 Tuition & Fee Rates: A National Comparison – Washington State Higher Education Coordinating Board (April 2009).

## Tuition and Fees

### University of Connecticut – Storrs Schedule of Full-Time Tuition & Common Fees In-State Undergraduate Students

	<u>2006-07</u>	<u>2007-08</u>	<u>2008-09</u>	<u>2009-10</u>	<u>2010-11</u>	<u>1 Year % Change</u>
Tuition	\$6,456	\$6,816	\$7,200	\$7,632	\$8,064	5.7%
General University Fee	1,344	1,416	1,488	1,584	1,656	4.5%
Infrastructure Maintenance Fee	342	360	380	400	426	6.5%
Conn. Daily Campus Fee	14	14	14	14	14	0.0%
Student Government Fee	66	76	86	86	86	0.0%
WHUS Fee & TV Fee	28	28	28	28	28	0.0%
Student Union Fee*	62	72	72	72	46	0.0%
Transit Fee	50	70	70	70	70	0.0%
<b>Total Commuting Student</b>	<b>\$8,362</b>	<b>\$8,852</b>	<b>\$9,338</b>	<b>\$9,886</b>	<b>\$10,416</b>	<b>5.4%</b>
Room Fee (Double)	4,350	4,698	5,090	5,396	5,774	7.0%
Food Service	3,916	4,152	4,414	4,724	5,008	6.0%
<b>Total Resident Student</b>	<b>\$16,628</b>	<b>\$17,702</b>	<b>\$18,842</b>	<b>\$20,006</b>	<b>\$21,198</b>	<b>6.0%</b>

### Out-of-State Undergraduate Students

	<u>2006-07</u>	<u>2007-08</u>	<u>2008-09</u>	<u>2009-10</u>	<u>2010-11</u>	<u>1 Year % Change</u>
Tuition	\$19,656	\$20,760	\$21,912	\$23,232	\$24,528	5.6%
General University Fee	1,344	1,416	1,488	1,584	1,656	4.5%
Infrastructure Maintenance Fee	342	360	380	400	426	6.5%
Conn. Daily Campus Fee	14	14	14	14	14	0.0%
Student Government Fee	66	76	86	86	86	0.0%
WHUS Fee & TV Fee	28	28	28	28	28	0.0%
Student Union Fee*	62	72	72	46	46	0.0%
Transit Fee	50	70	70	70	70	0.0%
<b>Total Commuting Student</b>	<b>\$21,562</b>	<b>\$22,796</b>	<b>\$24,050</b>	<b>\$24,486</b>	<b>\$26,880</b>	<b>5.5%</b>
Room Fee (Double)	4,350	4,698	5,090	5,396	5,774	7.0%
Food Service	3,916	4,152	4,414	4,724	5,008	6.0%
<b>Total Resident Student</b>	<b>\$29,828</b>	<b>\$31,646</b>	<b>\$33,554</b>	<b>\$35,606</b>	<b>\$37,662</b>	<b>5.8%</b>

**University of Connecticut Health Center  
Schedule of Tuition & Common Fees**

**In-State Students**

	<u>2006-07</u>	<u>2007-08</u>	<u>2008-09</u>	<u>2009-10</u>	<u>2010-11</u>	<u>1 Year % Change</u>
<b>School of Medicine</b>						
Basic Fees	\$7,670	\$7,938	\$8,335	\$8,752	\$9,190	5.0%
Tuition	18,250	18,889	19,833	20,824	\$21,865	5.0%
<b>Total School of Medicine</b>	<b>\$25,920</b>	<b>\$26,827</b>	<b>\$28,169</b>	<b>\$29,576</b>	<b>\$31,055</b>	<b>5.0%</b>
<b>School of Dental Medicine</b>						
Basic Fees	\$7,000	\$7,245	\$7,607	\$7,987	\$8,386	5.0%
Tuition	14,665	16,674	17,508	19,592	\$20,572	5.0%
<b>Total School of Dental Medicine</b>	<b>\$21,665</b>	<b>\$23,919</b>	<b>\$25,115</b>	<b>\$27,579</b>	<b>\$28,958</b>	<b>5.0%</b>

**Out-of-State Students**

	<u>2006-07</u>	<u>2007-08</u>	<u>2008-09</u>	<u>2009-10</u>	<u>2010-11</u>	<u>1 Year % Change</u>
<b>School of Medicine</b>						
Basic Fees	\$7,670	\$7,938	\$8,335	\$8,752	\$9,190	5.0%
Tuition	41,525	41,525	42,480	43,869	\$46,062	5.0%
<b>Total School of Medicine</b>	<b>\$49,195</b>	<b>\$49,463</b>	<b>\$50,815</b>	<b>\$52,621</b>	<b>\$55,252</b>	<b>5.0%</b>
<b>School of Dental Medicine</b>						
Basic Fees	\$7,000	\$7,245	\$7,607	\$7,987	\$8,386	5.0%
Tuition	37,587	40,519	42,545	45,120	\$47,376	5.0%
<b>Total School of Dental Medicine</b>	<b>\$44,587</b>	<b>\$47,764</b>	<b>\$50,152</b>	<b>\$53,107</b>	<b>\$55,762</b>	<b>5.0%</b>

## Tuition and Fees

### Connecticut State University System Average Schedule of Full-Time Tuition & Common Fees

#### In-State Undergraduate Students

	<u>2006-07</u>	<u>2007-08</u>	<u>2008-09</u>	<u>2009-10</u>	<u>2010-11</u>	<u>1 Year % Change</u>
Tuition	\$3,187	\$3,346	\$3,514	\$3,742	\$4,023	7.5%
University Fee	820	849	879	910	942	3.5%
University General Fee	1,916	2,171	2,412	2,622	2,756	5.1%
Information Tech Fee	223	227	232	0	0	0.0%
Student Activity Fee	128	133	133	120	120	0.0%
Media Fee	10	10	10	20	20	0.0%
<b>Total Commuting Student</b>	<b>\$6,284</b>	<b>\$6,736</b>	<b>\$7,179</b>	<b>\$7,567</b>	<b>7,861</b>	<b>6.0%</b>
Average Housing Fee	4,553	4,805	5,095	5,308	5,572	5.0%
Average Food Service	3,442	3,649	3,884	3,814	4,004	5.0%
<b>Total Resident Student</b>	<b>\$14,238</b>	<b>\$15,189</b>	<b>\$16,158</b>	<b>\$16,536</b>	<b>\$17,437</b>	<b>5.4%</b>

#### Out-of-State Undergraduate Students

	<u>2006-07</u>	<u>2007-08</u>	<u>2008-09</u>	<u>2009-10</u>	<u>2010-11</u>	<u>1 Year % Change</u>
Tuition	\$10,315	\$10,831	\$11,373	\$12,112	\$13,020	7.5%
University Fee	2,014	2,084	2,157	2,232	2,310	3.5%
University General Fee	1,916	2,171	2,412	2,622	2,756	5.1%
Information Tech Fee	223	227	232	0	0	0.0%
Student Activity Fee	128	133	133	120	120	0.0%
Media Fee	10	10	10	20	20	0.0%
<b>Total Commuting Student</b>	<b>\$14,606</b>	<b>\$15,456</b>	<b>\$16,316</b>	<b>\$17,106</b>	<b>18,226</b>	<b>6.5%</b>
Avg. Housing Fee	4,553	4,805	5,095	5,308	5,572	5.0%
Avg. Food Service	3,442	3,649	3,884	3,814	4,004	5.0%
<b>Total Resident Student</b>	<b>\$22,560</b>	<b>\$23,909</b>	<b>\$25,295</b>	<b>\$26,226</b>	<b>27,802</b>	<b>6.0%</b>

**Connecticut Community College System  
Schedule of Full-Time Tuition & Common Fees**

**In-State Undergraduate Students**

	<u>2006-07</u>	<u>2007-08</u>	<u>2008-09</u>	<u>2009-10</u>	<u>2010-11</u>	<b>1 Year % Change</b>
Tuition	\$2,352	\$2,496	\$2,640	\$2,832	\$3,024	6.8%
College Service Fee	300	312	324	348	362	4.0%
Student Activity Fee	20	20	20	20	20	0.0%
<b>Total</b>	<b>\$2,672</b>	<b>\$2,828</b>	<b>\$2,984</b>	<b>\$3,200</b>	<b>\$3,406</b>	<b>6.4%</b>

**Out-of-State Undergraduate Students**

	<u>2006-07</u>	<u>2007-08</u>	<u>2008-09</u>	<u>2009-10</u>	<u>2010-11</u>	<b>1 Year % Change</b>
Tuition	\$7,056	\$7,488	\$7,920	\$8,496	\$9,072	6.8%
College Service Fee	900	936	972	1,044	1,086	4.0%
Student Activity Fee	20	20	20	20	20	0.0%
<b>Total</b>	<b>\$7,976</b>	<b>\$8,444</b>	<b>\$8,912</b>	<b>\$9,560</b>	<b>\$10,178</b>	<b>6.5%</b>

### Charter Oak State College Schedule of Tuition & Common Fees In-State Students

	<u>2006-07</u>	<u>2007-08</u>	<u>2008-09</u>	<u>2009-10</u>	<u>2010-11</u>	<u>1 Year % Change</u>
Associates Degree	\$920	\$955	\$980	\$1,335	\$1,361	1.9%
Bachelors Degree (1st year cost)	\$1,045	\$1,070	\$1,090	\$1,130	\$1,156	2.3%
Bachelors Degree (after 1st year)	\$635	\$655	\$675	\$695	\$707	1.7%

### Out-of-State Students

	<u>2006-07</u>	<u>2007-08</u>	<u>2008-09</u>	<u>2009-10</u>	<u>2010-11</u>	<u>1 Year % Change</u>
Associates Degree	\$1,200	\$1,235	\$1,265	\$1,670	\$1,705	2.1%
Bachelors Degree (1st year cost)	\$1,360	\$1,385	\$1,410	\$1,465	\$1,500	2.4%
Bachelors Degree (after 1st year)	\$845	\$865	\$890	\$920	\$938	2.0%