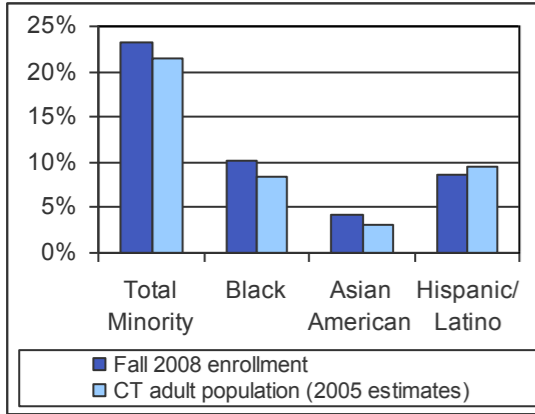


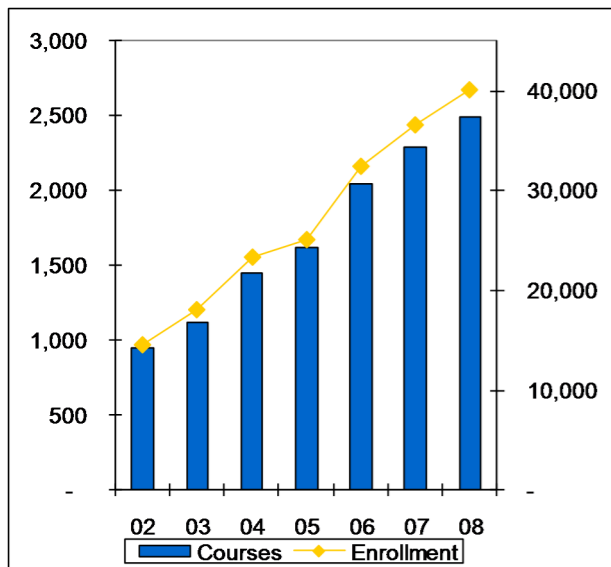
Minority Student Enrollment

Enrollment of all minorities in CT higher education exceeds their share of students in the CT population aged 18 and over, but Hispanic students are still underrepresented.



Online Courses and Enrollment

There has been tremendous growth in the number of online courses and enrollments in CT.



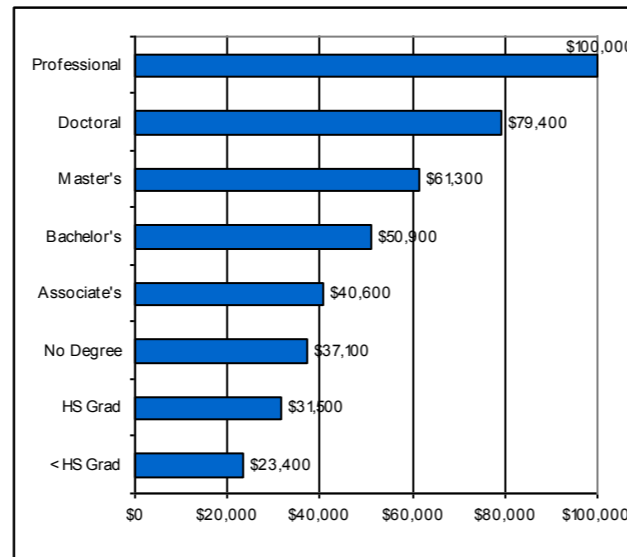
Educational Attainment

Connecticut has fallen from its top position among all states to 4th in the educational attainment level of its population. Worse, the percentage aged 25-and-older with a bachelor's degree or higher is below national and regional levels for Blacks and below the region for Hispanics.

| | 1990 | 1990 Rank | 2000 | 2000 Rank | 2007 | 2007 Rank |
|----|-------|-----------|-------|-----------|-------|-----------|
| CT | 27.2% | 1 | 31.6% | 4 | 34.7% | 4 |
| US | 20.3% | | 24.4% | | 27.5% | |

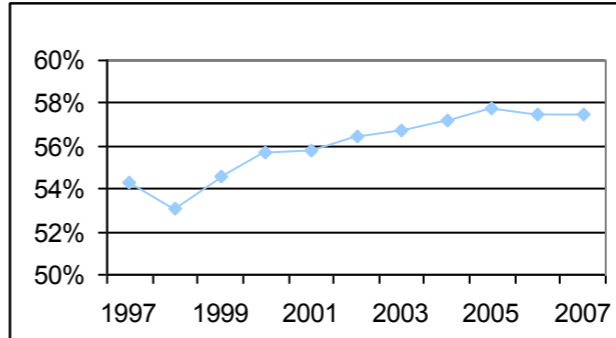
Earning Power

Earning a degree significantly raises individual earning power. Those with bachelor's degrees, for example, earn an average of \$50,900 a year compared to just \$31,500 for high school graduates across the country.



Brain Gain

Since 1996, CT has steadily increased the percentage of public high school graduates who plan to attend college in CT from 52% to over 57%.



Licensure Pass Rates

Graduates of CT public colleges score high on licensure exams. Some examples:

- Pass rates on nursing exams at all of the constituent units exceed the state average of all test takers.
- Pass rates on the teacher education Praxis II exam at UConn and CSU range between 95% and 100%.
- Pass rates on radiology, respiratory care and nuclear medicine at the community colleges range from 96% to 100%.

Retention and Graduation Rates

| Institution | First-Year Retention | Graduation Rates | |
|---------------------------|----------------------|------------------|--------|
| | | 4-Year | 6-Year |
| UConn | 89% | 56% | 71% |
| Storrs | 93% | 66% | 76% |
| Regional Campuses | 78% | 25% | 48% |
| CSUS | 77% | 19% | 43% |
| Central | 79% | 17% | 46% |
| Eastern | 74% | 32% | 46% |
| Southern | 77% | 16% | 38% |
| Western | 74% | 16% | 40% |
| | | 3-Year | |
| Community Colleges | 59% | | 10% |
| Asnuntuck | 57% | | 24% |
| Capital | 56% | | 10% |
| Gateway | 54% | | 10% |
| Housatonic | 59% | | 10% |
| Manchester | 63% | | 11% |
| Middlesex | 60% | | 9% |
| Naugatuck Valley | 58% | | 7% |
| Northwestern CT | 66% | | 13% |
| Norwalk | 63% | | 9% |
| Quinebaug Valley | 60% | | 17% |
| Three Rivers | 55% | | 13% |
| Tunxis | 63% | | 7% |
| Charter Oak | 87% | | |
| Associate's | n/a | | 60% |
| Bachelor's | n/a | | 53% |