

Board of Governors for Higher Education
Department of Higher Education
State of Connecticut



FALL 2007 COLLEGE AND UNIVERSITY HEADCOUNT IN CONNECTICUT

Total headcount enrollment at Connecticut's colleges and universities reached 178,855 students in fall 2007, yielding a sixth consecutive record year for the state. The increase was 2,295 students (or 1.3%) over fall 2006.

However, 2007 is the fifth consecutive year of tepid growth. The average annual growth from 1998 to 2002 was a robust 2.4 percent, but slowed by more than half to an average of only 1.1 percent between 2002 and 2007. This deceleration of growth was even greater within the public sector where average yearly growth slowed by more than two-thirds from 3.2 percent to 1.0 percent over those two periods.

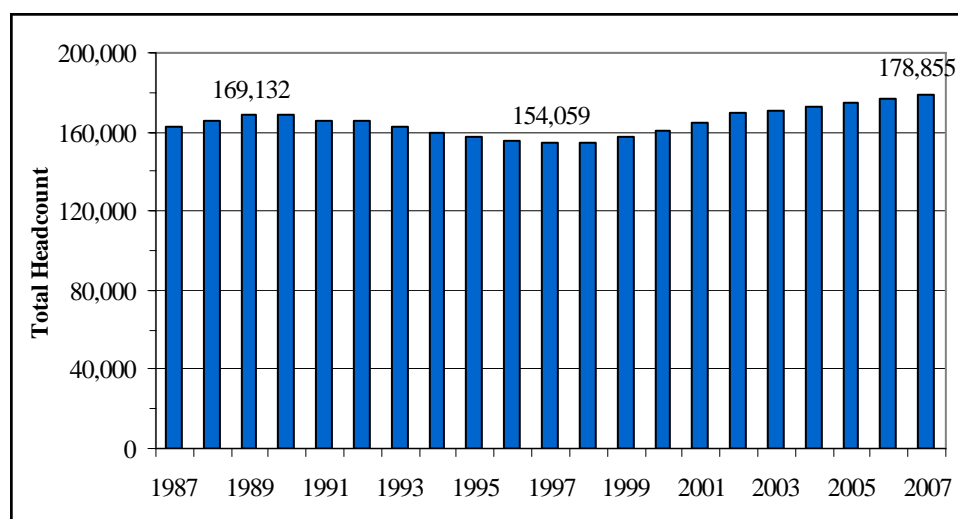
This report analyzes fall 2007 headcount enrollment at Connecticut's public and independent colleges and universities. It presents data and trends on students enrolled for credit at 47 institutions with details on attendance status, level and sector (see Appendix for institutional data). All references to years in this report are to enrollment in the fall of that year. A subsequent report will provide demographic detail on race/ethnicity, gender, age, residence, and the like, and full-time-equivalent (FTE) enrollment.

STATEWIDE PERSPECTIVE

OVERALL TRENDS

The total in 2007 is the highest ever and the 10th consecutive year of growth since 1997 when enrollment (154,059) was the lowest since at least 1978 (see Figure 1 for recent data). Enrollment rose by 24,796 (16%) in the last decade, but the growth in the first half of the decade (1997-2002) was almost double that of the second half (2002-2007).

FIGURE 1: ENROLLMENT HISTORY
CONNECTICUT COLLEGES AND UNIVERSITIES



The headcount enrollment count includes those enrolled in at least one course for credit (i.e., could count toward a degree/certificate even if the student is not seeking any award), whether on-campus or on-line. It excludes those taking only non-credit courses such as remedial work, professional development and self-improvement.

The overall 1.3 percent growth in 2007 reflects a gain of 2.8 percent in the number of full-time students and a decrease of 1.4 percent attending part-time. Because of this growth differential, the state’s headcount increase of 1.3 percent will yield a larger percentage growth in the state’s full-time-equivalent (FTE) enrollment when that data becomes available.

The ranks of “traditional” college students continue to grow with the number of full-time undergraduates rising by 42 percent between 1997 and 2007 (see below). The 16 percent increase among all students during that decade reflects that 42 percent increase in full-time undergraduates and a net decline of six percent among all other students. Over those 10 years, the number of full-time undergraduates rose from 45 to 56 percent of total enrollment, and this year was just 521 students shy of breaching the 100,000 mark.

**STATEWIDE ENROLLMENT
1997-2007**

	1997	2007	# Change	% Change
Full-time undergraduates	69,999	99,479	29,480	42%
All other students	84,060	79,376	-4,684	-6%
Total	154,059	178,855	24,796	16%
Full-time undergraduates as % of total	45%	56%		

This remarkable shift reflects a general transition from part-time to full-time attendance, growth in the pool of in-state high school graduates and stronger retention of Connecticut’s college-bound high school graduates.

The number of graduates from public high schools in Connecticut is projected to peak in 2008 and decline nine percent over the next eight years. In the absence of countervailing enrollment increases elsewhere, this shift will produce fewer number of full-time undergraduates.

FULL-TIME AND PART-TIME ENROLLMENT

Of the statewide total, 117,844 (66%) attend full-time and 61,011 (34%) are part-time. Full-time enrollment this fall rose by 3,183 students (2.8%) over 2006 while the number of part-time students decreased by 888 (1.4%).

Although total enrollment grew every year since 1997, full-time enrollment increased every year since 1994 (driven largely at the undergraduate level) and declined less than part-time enrollment did in 1993 and 1994, meaning that full-time students as a share of total enrollment rose throughout the last 15 years. Part-time enrollment fell over that period except for slight up-ticks (0.4% or less) in both 2002 and 2006. The full-time share thus increased every year since 1992 (when it was 51% full-time) to 2007 (66% full-time), creating the startling shift depicted on the next page.

**STATEWIDE ENROLLMENT
1992-2007**

	1992	2007	# Change	% Change
Full-time	84,035	117,844	33,809	40%
Part-time	81,760	61,011	-20,749	-25%
Total	165,795	178,855	13,060	8%
Full-time as % of total	51%	66%		

The 66 percent share for full-time students is the highest in at least 21 years and the 15th consecutive gain since 1992. It is remarkable that Connecticut higher education in just 15 years shifted from a bare majority full-time to almost two-thirds full-time.

UNDERGRADUATE AND GRADUATE ENROLLMENT

The statewide total consists of 144,457 (81%) undergraduates, 31,078 (17%) graduate students and 3,320 (2%) first-professional students.¹ This partition has been relatively stable for the last 20 years.

Enrollment grew at all three levels in 2007 — 1.5 percent among undergraduates and 0.6 and 0.7 percent for graduate and first-professional enrollment, respectively. Since the overall trough year of 1997, enrollment is up 20 percent among undergraduates and four percent for graduate students and down three percent among first-professional students.

A vast majority of both first-professional students (88%) and undergraduates (69%) attend full-time, but graduate students (49.7% full time) are just shy of a majority. The full-time share for undergraduates increased for 15 consecutive years (from 54% in 1992 to 69% this year) and the share among graduate students also grew significantly over the last 21 years (from 29% full-time in 1987 to 49.7% this year). The full-time share among first-professionals has been relatively flat.

FOUR-YEAR AND TWO-YEAR SECTORS

A disturbing enrollment trend in 2007 is virtually no growth at the four-year colleges. The colleges, which enrolled 71 percent of students this fall, registered only a 0.1 percent increase over 2006 while the two-year colleges (enrolling the other 29% of students) saw a 4.4 percent jump this year. That is the starkest differential in trend since 2002 with the total at two-year colleges rising 9.6 percent during that half decade and enrollment across the four-year sector increasing only 3.7 percent, including the meager increase (0.1%) in 2007.

PUBLIC AND INDEPENDENT SECTORS

Public institutions (including the U.S. Coast Guard Academy, or USCGA, as a federal institution) enrolled 113,458 students in 2007 (up 1.5% over 2006) and the independent institutions enrolled 65,397 (up 0.9% over 2006). The 63 percent share for the publics this year is the historical norm. The share of students who are full-time is 59 percent at the publics (the

seventh consecutive year of full-time students being a majority after being a minority for at least the previous 14 years) and 77 percent at the independents.

Figure 2 is a pie chart of statewide enrollment shares in 2007.² The 12 community colleges enrolled 27 percent of the state’s students and the 19 regional independents captured another 24 percent, giving those two subsectors combined a majority of Connecticut college students. The four institutions in the Connecticut State University (CSU) system are not far behind with 20 percent of the state’s total. UConn (16%) and the four national independents (11%) round out the lion’s share of enrollment. The USCGA and the two-year independents combined provide the last two percent of the statewide total.

FIGURE 2
FALL 2007 ENROLLMENT BY SECTOR

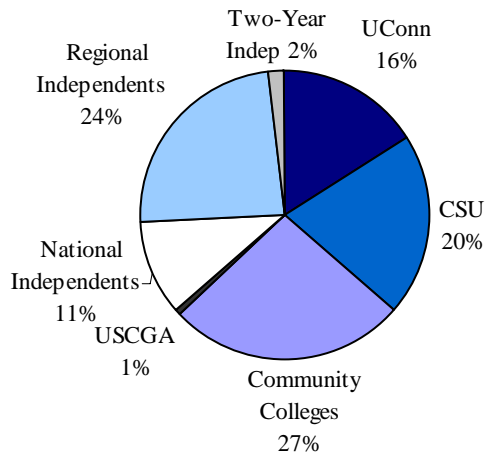
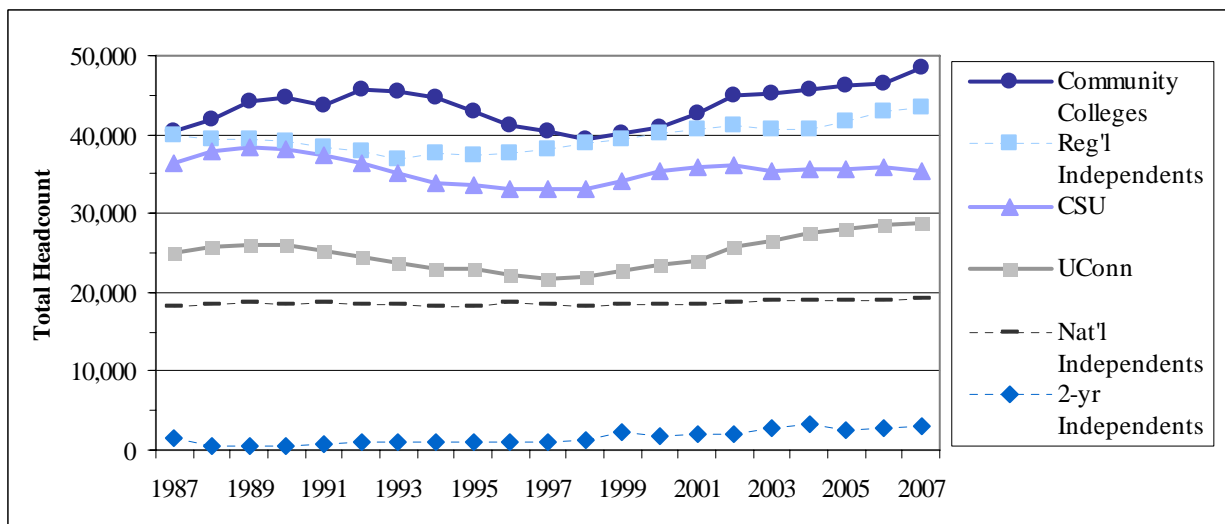


Figure 3 plots enrollment data (as headcount rather than share of the state total) for the six categories of institutions over the last two decades of 1987-2007. Details appear below in the sections on each type, but Figure 3 shows two patterns. First, the relative shares of each type are relatively stable because no category gained or lost even close to two percentage points of its 21-year average. Second, with the exception of a virtually flat line for the national independents, enrollment by institutional type fluctuates, sometimes in tandem with overall statewide trends and sometimes in divergence.

FIGURE 3
ENROLLMENT BY SECTOR: 1987-2007



A final perspective on the public and independent sectors comes from Table 1, which sorts the 47 institutions and breaks out UConn enrollment by campus. The 10 largest colleges enroll a solid majority (55%) of the state's students and the 10 smallest colleges combined educate less than one percent of our students.

TABLE 1
FALL 2007 COLLEGE ENROLLMENT, SORTED HIGH-TO-LOW*

Publics	Enrollment	Independents
UConn-Storrs	23,692	
Central CSU	12,106	
Southern CSU	11,930	
	11,454	Yale University
	7,290	University of Hartford
	7,216	Quinnipiac University
Manchester CC	6,484	
Norwalk CC	6,231	
Western CSU	6,211	
Naugatuck Valley CC	5,966	
Gateway CC	5,965	
	5,801	Sacred Heart University
Eastern CSU	5,137	
	5,024	Fairfield University
	4,774	University of New Haven
	4,752	University of Bridgeport
Housatonic CC	4,475	
Three Rivers CC	3,858	
Tunxis CC	3,836	
Capital CC	3,726	
	3,222	Wesleyan University
Middlesex CC	2,623	
	2,526	Trinity College
UConn-Tri-Campus	2,480	
	2,034	Albertus Magnus College
	1,869	Connecticut College
Quinebaug Valley CC	1,846	
Asnuntuck CC	1,792	
	1,773	St. Joseph College
Northwestern CT CC	1,632	
	1,440	Goodwin College
	1,271	Post University
UConn-Stamford	1,270	
U.S. Coast Guard Academy	963	
	919	Gibbs College
	894	Mitchell College
UConn-Avery Point	748	
	730	Rensselaer at Hartford
	663	Briarwood College
UConn-Health Center	487	

**Smallest 10 Colleges (total enrollment 1,745 or 0.98% of statewide enrollment) are those with <475 students. All are independents and listed in descending order of enrollment: St. Vincent's, Holy Apostles, Graduate Institute, Paier College of Art, Hartford Seminary, Lyme Academy College of Fine Arts, Legion of Christ, Int'l Coll. of Hospitality Management (since renamed Clemens College), St. Thomas Seminary, and St. Basil's.*

Table 1 also separates publics from independents. The three institutions with the most students are public, as are seven of the top 10 and 13 of the top 20. Excluding the UConn Health Center as a stand-alone medical/dental school, 12 of the 28 independents are smaller than the smallest public. The median size of the 21 public institutions (which counts UConn branches separately, but again excludes the atypical Health Center) is 3,858, or more than 3.5 times the 1,098 median enrollment across the 28 independents.

PUBLIC COLLEGES AND UNIVERSITIES

The 22 public institutions (21 state colleges, including UConn branches and the federal USCGA) enrolled 113,458 students, an increase of 1,698 students (1.5%) over 2006. Full-time counts rose 3.4 percent and part-time counts fell 1.1 percent. Excluding the USCGA, state-supported institutions enrolled 112,495 students for an increase of 1.6 percent. (Taken out to another decimal point, the growth in the public and state sectors are 1.52% vs. 1.56%, or less than a .05% difference.) This is the ninth consecutive year of increase in both public and state-supported sectors.

For the seventh consecutive year, full-time students represent a majority (59%) of total enrollment at the public institutions. This full-time share at the publics first became a majority (51%) in 2001 after falling just shy (49.91%) in 2000.

Enrollment by level for public institutions are 98,807 undergraduates (87% of the total), 13,245 graduate students (12%) and 1,406 first-professional students (1%).

As noted above, the public sector enrolled 63 percent of all Connecticut college students. That student share, however, is far from uniform because the publics enrolled 57 percent of the state's full-time students and 76 percent of those attending part-time. The public sector has more than two-thirds (68%) of Connecticut undergraduates, but less than half of both the state's graduate students (43%) and first-professional students (42%).

UNIVERSITY OF CONNECTICUT (UConn – FIVE CAMPUSES)

UConn enrolled 28,677 students in 2007 for an increase of 196 students (0.7%). It saw growth in full-time numbers (up 1.5%) and a drop in part-time numbers (down 2.8%).

The main campus at Storrs has 23,692 students, up 135 (or 0.6%) over 2006. Storrs enrolls 83 percent of students at the state's flagship university.

The three branch campuses enroll another 16 percent of university-wide enrollment. Avery Point registered 748 students (an 11.5% increase over last year), but both Stamford with 1,270 (down 0.9%) and the Tri-Campus with 2,480 (down 0.2%, with locations in Hartford, Torrington and Waterbury) saw declines. Full-time students are the majority at all three branch campuses.

The UConn Health Center, with the state's public medical and dental schools, represent two percent of UConn enrollment. It has 487 students this year, as it did in 2006.

Those five entities, and the entire university, have the following profiles for their students in 2007 (percentages read across by college).

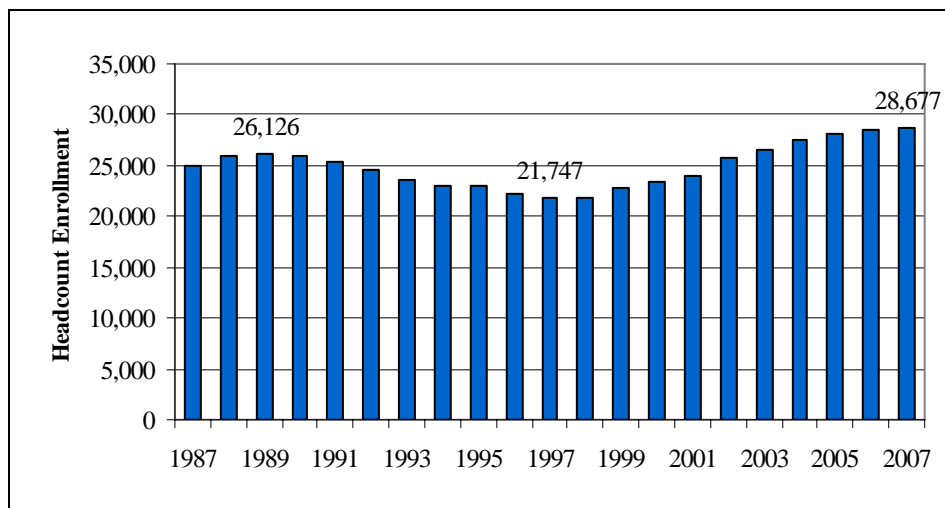
	Full-Time	Part-Time	Undergraduate	Graduate*	First-Professional
All of UConn	82%	18%	73%	22%	5%
Storrs	84%	16%	69%	27%	4%
Avery Point	73%	27%	100%	—	—
Tri-Campus	73%	27%	100%	—	—
Stamford	61%	39%	100%	—	—
Health Center	99%	1%	—	—	100%

*All graduate students are counted at Storrs rather than where they actually are enrolled.

Storrs registers 78 percent of all undergraduates, 100 percent of graduate students (see note in the table above) and 65 percent of first-professional students.

FIGURE 4
ENROLLMENT HISTORY AT UCONN: 1987-2007

Figure 4 plots total enrollment at UConn over the last 21 years and shows a pattern similar to that in Figure 1 for statewide enrollment — a peak in 1989, a trough in 1997 and increases since then. UConn in 2003 surpassed its earlier 1989 peak and set new records in each year from 2004 to 2007.



CONNECTICUT STATE UNIVERSITY (CSU – FOUR INSTITUTIONS)

CSU has 35,384 students for a net loss of 411 students (-1.1%) over 2006. Full-time counts were up 2.3 percent and part-time counts were down 8.3 percent. Western enrolled 125 students (2.1%) more than in 2006, while the other three CSUs saw decreases ranging from -0.3 percent at Central to -3.2 percent at Southern.

Central is the largest CSU institution (12,106 students vs. 11,930 at Southern) as it has been for 19 of the last 21 years. It enrolled 34.2 percent of all CSU students in 2007, Southern had 33.7 percent, Western (6,211 students) had another 18 percent and Eastern (5,137 students) provided the remaining 15 percent of CSU students.

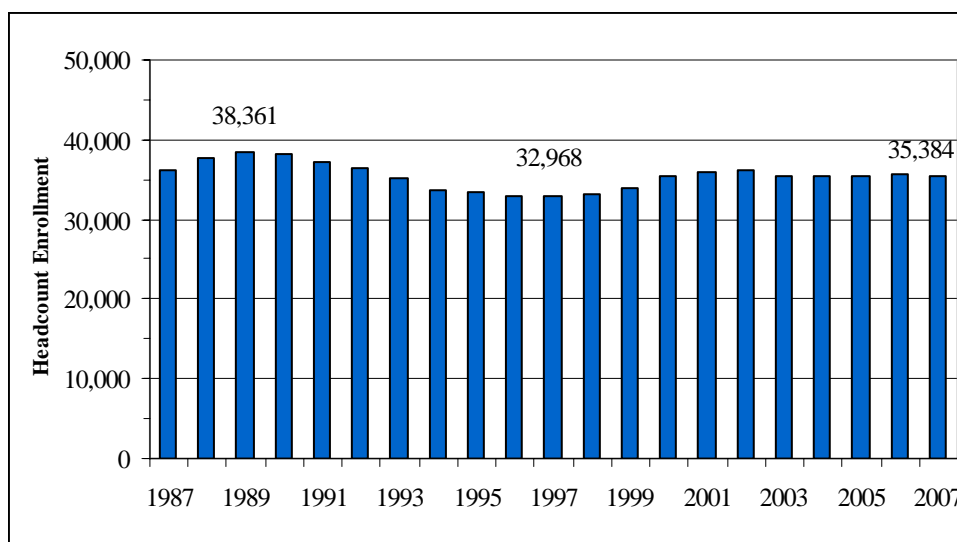
A summary profile of this year’s student body for the system and its four campuses is as follows (percentages again read across by college):

	Full-Time	Part-Time	Undergraduate	Graduate
All of CSU	70%	30%	81%	19%
Central	68%	32%	80%	20%
Eastern	79%	21%	94%	6%
Southern	67%	33%	71%	29%
Western	72%	28%	89%	11%

Eastern stands out from the pack for its higher share of full-time students and much higher share of undergraduates. More than three-fourths (77%) of its students are full-time undergraduates, which is consistent with Eastern’s mission as Connecticut’s public liberal arts institution. In contrast, Southern (the lead graduate institution of CSU) has less than three in five (59.6%) of its students as full-time undergraduates.

FIGURE 5
ENROLLMENT HISTORY AT CONNECTICUT STATE UNIVERSITY:
1987-2007

Figure 5 plots the systemwide totals for the last 21 years. As with statewide and UConn data, we see an enrollment peak in 1989, more or less steady decline to a trough in 1997 and an upward trend from 1997 to 2002. CSU during those first five years after that trough regained 59 percent of its losses from the decline between 1989 and 1997.



Unlike the rest of the state sector, CSU headcount enrollment headed downward (2.1% decrease) between 2002 and 2007. (CSU headcount enrollment would have to increase by 8.4 percent just to match its earlier 1989 peak.) The 2.1 percent decrease in CSU headcount enrollment between 2002 and 2007 is far from uniform and instead reflects a 12 percent gain in full-time undergraduates (65% of CSU students in 2007) and a 21 percent decrease for all other students (i.e., part-time undergraduates and all graduate students).

That systemwide data mask differing campus trends. Over the last two decades (1987-2007), enrollment at Eastern increased 19 percent, Western saw a small gain (up 1%) and both Southern and Central registered losses (3% and 10%, respectively). Enrollment at Eastern

peaked in 2001, but the other three campuses had their maximum enrollment within one year of the systemwide maximum in 1989.

COMMUNITY COLLEGES (12 INSTITUTIONS)

The 12 community colleges enrolled 48,434 students this year, for a net increase of 1,945 (4.2%) over 2006. The increases by attendance status were 8.0 percent for full-time students and 2.0 percent for part-time students.

All 12 community colleges saw enrollment increases for the first time in our 21 years of detailed data.³ (That system came close to 12 gains in 2002, when one college had the same total as in 2001 and another was up only one student.) The gains in 2007 ranged from 9.4 percent at Asnuntuck to 1.0 percent at Housatonic. Eleven of the 12 saw increases in full-time enrollment (the exception was Quinebaug Valley, but its 6.8% increase in part-time students more than counter-balanced its 1.2% decrease in full-time students) and ten of the 12 also saw gains in part-time enrollment.

Manchester (6,484) maintained its enrollment lead over Norwalk (6,231) as the largest college for the fourth consecutive year after also holding that distinction from 1987 to 1998. (Norwalk had the lead for the five years from 1999 to 2003).

The community colleges represent a plurality of both public enrollment (43% of all those at state-supported institutions or the USCGA) and total enrollment (27% of all college students). They are almost a majority (49.6%) of total part-time enrollment across the state and more than two-thirds (67.3%) of part-time undergraduates.

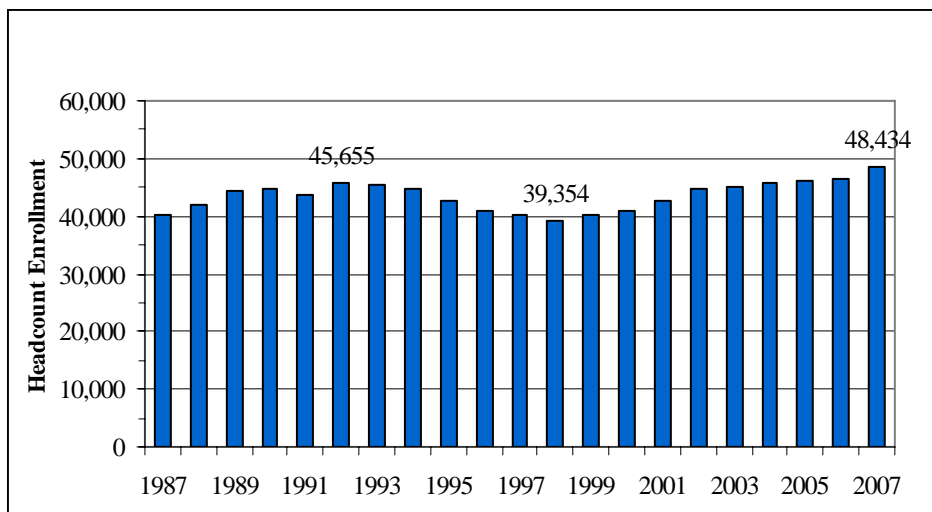
Despite their large share of part-time enrollment, the community colleges continued their 10-year increase in full-time enrollment — from 9,558 in 1997 to 18,179 in 2007, or up 90 percent. Part-time enrollment was down two percent over the same period. The number of full-time students as a share of total enrollment rose from 24 percent in 1997 to 38 percent this year.

Full-time students first exceeded one-third of total community college headcount in 2004 after becoming the majority in total credit hours (and thus FTE enrollment) in 2002. The unprecedented growth in the ranks of full-time students (many of whom are new high school graduates) markedly changed the community college population and poses unique challenges for the system to meet the instructional and support services needs of these students. That shift toward more full-time students, however, may reverse in the near future after Connecticut reaches its projected peak in the number of public high school graduates in 2008.

The 12 community colleges differ greatly in size (Manchester as the largest enrolls almost four times as many students as Northwestern as the smallest), but are more homogenous in their student profile. All students are undergraduates, and the systemwide 38 percent share for full-time students ranges only from 28 percent at Capital to 45 percent at Manchester.

Figure 6 plots total community college enrollment and differs from the three earlier bar charts in that this system's headcount peaked three years later in 1992 (rather than 1989) and bottomed out one year later in 1998 (and not in 1997). However, there is the same overall pattern of steady decline from the earlier peak until

FIGURE 6
ENROLLMENT HISTORY AT COMMUNITY COLLEGES: 1987-2007



the trough year, steady growth since then and (except for CSU) breaking the previous peak to surge higher. Statewide, UConn and community college enrollments all broke that earlier acme in the first half of this decade; the added growth since that more distant record are six, ten, and nine percent, respectively. CSU mirrored the patterns of statewide, UConn and community college enrollment until its (local) peak in 2002 and fell 2.1 percent over the last five years.

The overall enrollment increase at the community colleges of 23 percent since its trough year of 1998 is far from uniform. Asnuntuck and Northwestern both declined six percent, and Quinebaug Valley and Gateway were up 52 percent and 50 percent, respectively.

CHARTER OAK STATE COLLEGE

Charter Oak State College this year enrolled 1,557 students, or 154 (9.0%) fewer than in 2006. However, it also registered its first full-time students (81 of them, vs. 1,476 enrolled part-time), and these new full-time enrollments may well cushion part or most of the nine percent decrease in headcount enrollment.

Charter Oak students, however, are not included in the statewide total or table because many of these students also are enrolled at other institutions in the state. They thus are counted in the rows for other colleges in Appendix A.

U.S. COAST GUARD ACADEMY

The United States Coast Guard Academy enrolled 963 students this year, 32 students (3.2%) fewer than last year. All are full-time undergraduates.

INDEPENDENT COLLEGES AND UNIVERSITIES

The 28 independent institutions in Connecticut enrolled the other 37 percent of the state's college students. Their total of 65,397 students in 2007 is a gain of 597 (0.9%) over 2006. Full-time enrollment rose 1.9% and part-time totals fell 2.4%.

In 2007, 77 percent of students in the independent sector were full time. The full-time share was 60 percent as late as 1992 when it began its almost steady 15-year increase.

This year, 70 percent of these students are undergraduates, 27 percent are graduate students and three percent are first-professional students. This breakdown by level has been remarkably stable over the last 20 years.

The colleges comprising the independent sector have varied greatly over the last 21 years, with seven new entrants, four closed colleges and assorted consolidations. The total enrollment across the independents has been relatively steady compared to the analogous variation in the seemingly static public sector.

Between 1987 and 2007, the maximum enrollment across the independents (this year's 65,397) is only 14 percent higher than the minimum enrollment of 57,135 in 1993. In contrast, the maximum headcount in the public sector (113,458, also in 2007) is 19 percent higher than the minimum of 95,094 in 1998. That 19 percent variation among the publics (with no changes over the last 21 years; see minor exception in endnote #4) vs. 14 percent variation among the independents (with much to-and-fro in its membership) demonstrates the greater stability of the independent sector. Less reliance on in-state students provides the independent colleges with less variation.

NATIONAL INDEPENDENTS (FOUR INSTITUTIONS)

Connecticut College, Trinity, Wesleyan and Yale enrolled 19,071 students in 2007 (an increase of 51 or 0.3% over 2006) and represent 11 percent of statewide enrollment. The undergraduates across these four institutions are about 90 percent from out-of-state represent almost all of the 50 states and have a significant international component. The total among these colleges has been very stable over the last 21 years, with the maximum (19,071 in 2007) less than five percent higher than the minimum (18,192 in 1995).

The profile of the students in this sector in 2007 is as follows:

	Full-Time	Part-Time	Undergraduate	Graduate	First - Professional
National Independents	96%	4%	65%	29%	7%
Connecticut College	97%	3%	99%	1%	—
Trinity College	86%	14%	93%	7%	—
Wesleyan University	93%	7%	87%	13%	—
Yale University	98%	2%	46%	43%	11%

Excluding the four colleges that educate only graduate and/or first-professional students (i.e., UConn Health Center, Graduate Institute, Hartford Seminary and Rensselaer at Hartford), Yale is one of only three institutions in the state that have undergraduates as a minority (albeit still a plurality) of total enrollment. The two other institutions will appear below in the section on regional independents.

Enrollment at the national independents is overwhelmingly full-time (98%) at both the undergraduate and first-professional (Yale's law, medical and divinity schools) levels. Graduate students appear to be predominantly full-time (90% across the four colleges), but that aggregate figure obscures the underlying variation — i.e., the full-time share among graduate students is 97 percent at Yale, which enrolls 89 percent of the graduate students in this sector and 34 percent across the other three colleges combined.

REGIONAL INDEPENDENTS (19 INSTITUTIONS)

These 19 colleges are a heterogeneous lot. Six enrolled more than 4,500 students this fall, seven had 300 or fewer and six are in the vast middle ground of 301 to 4,500. Four regional independents enroll only undergraduates; four have only graduate students; eight teach both undergraduate and graduate students; and the final three cover the full range of undergraduates, graduate students and first-professionals. Some offer only one major while others provide their students with more than 100 program options.

These colleges enrolled 43,358 students this fall, for an increase of 329 (or 0.8%) over 2006. However, excluding the University of Bridgeport (and its increase of 734 students in 2007) would convert the regional independents from a slight increase to a slight decrease of 405 students or -1.0 percent.

Full-time enrollment (including all 19 colleges) increased 3.1 percent, and part-time students declined 4.8%, over 2006. The healthy increase in full-time students continues a 13-year shift that converted this sector from a minority (49.7%) in 1994 to almost three-fourths full-time (72%) this year.

Changes in 2007 varied greatly, even just among the 12 of the 19 colleges that enrolled more than 300 students in 2007. (Small colleges can produce misleading percentage changes – e.g., three fewer students at St. Basil's College created a 17% decrease and 18 more at St. Thomas Seminary yielded a doubling or 100% increase.)

In 2007, the University of Hartford (7,290 students) regained its status of at least 30 years as the state's largest regional independent and supplanted Quinnipiac (7,216 students) from the pinnacle it held in 2005 and 2006. The slight (1.7%) decline for Quinnipiac in 2007 ended a truly remarkable 20 consecutive years of growth — from 2,769 in 1986 to 7,341 in 2006 (a cumulative increase of 161 percent) with a tremendous boost in 1992 from acquiring the law school at the University of Bridgeport.

As noted above, the 19 regional independents vary greatly by size — e.g., 486 University of Hartford students for every one at St. Basil's College. The three largest (University of Hartford, Quinnipiac and Sacred Heart) combined enroll almost half (47%), the next six highest enroll about the same (45%) share, and the smallest 10 colleges enroll the remaining eight percent.

The profile of the students in this sector for this year is as follows:

	Full-Time	Part-Time	Undergraduate	Graduate	First-Professional
All Regional Independents	72%	28%	70%	28%	2%
Albertus Magnus College	91%	9%	83%	17%	
Briarwood College	64%	36%	100%		
Fairfield University	74%	26%	80%	20%	
Graduate Institute, The	100%			100%	
Hartford Seminary	25%	75%		100%	
Holy Apostles College	34%	66%	16%	59%	25%
Lyme Academy College of Fine Arts	66%	34%	99%	1%	
Mitchell College	84%	16%	100%		
Paier College of Art	67%	33%	100%		
Post University	56%	44%	96%	4%	
Quinnipiac University	87%	13%	80%	15%	5%
Rensselaer at Hartford	5%	95%		100%	
Sacred Heart University	69%	31%	73%	27%	
St. Basil's College	80%	20%	100%		
St. Joseph College	49%	51%	56%	44%	
St. Thomas Seminary		100%		100%	
University of Bridgeport	65%	35%	38%	58%	4%
University of Hartford	73%	27%	77%	23%	
University of New Haven	75%	25%	63%	37%	

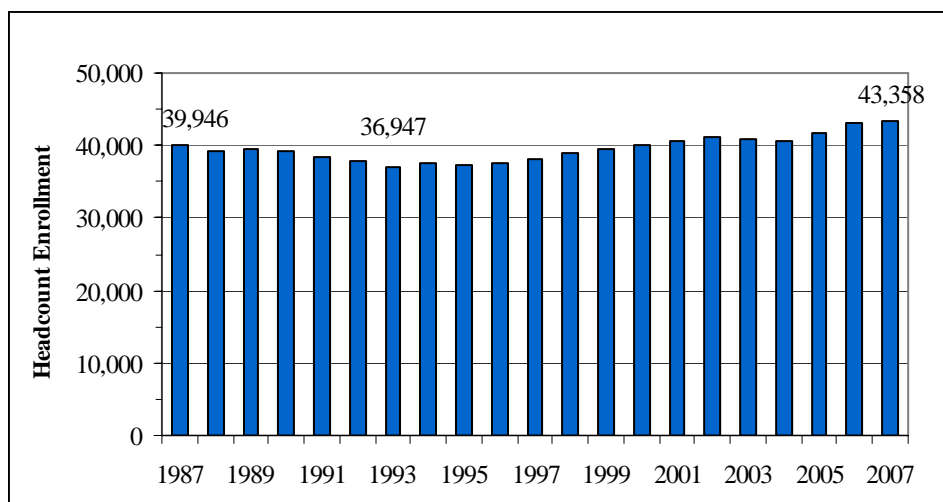
Note that undergraduates at both Holy Apostles and the University of Bridgeport, like Yale earlier, comprise less than half of total enrollment. The other 18 Connecticut colleges (regardless of sector) that provide both undergraduate and graduate education have enrollments that are a majority undergraduate.

Among the 15 regional independents that enrolled undergraduates, only Holy Apostles had a minority of them (i.e., 37%) as full-time. The other 14 ranged from 59 percent of undergraduates as full-time at Post to 95 percent at Quinnipiac.

Historical enrollment trends at the regional independents differ from those elsewhere in Connecticut. The earlier peak enrollment was 43,628 students in 1983, its nadir was the 36,947 in 1993 and even in 2007 (43,358) the regional independents still are shy (albeit only 0.6% below) of their peak from 24 years earlier.

Figure 7 (like the other system bar graphs) plots the headcount enrollment across the regional independents for the last 21 years of data. Because the full-time share in this sector increased from 46 percent in 1987 to 72 percent full-time in 2007 (data is incomplete before 1987), the FTE enrollment now almost certainly is much higher than in that earlier headcount peak in 1983.

FIGURE 7
ENROLLMENT HISTORY AT REGIONAL INDEPENDENTS: 1987-2007



TWO-YEAR INDEPENDENTS (FIVE INSTITUTIONS)

These five colleges enrolled 2,968 students in 2007, an increase of 217 students (or 7.9%) over 2006. As noted above, the two-year sector (both public and independent) provided almost all of the net statewide enrollment increase of 2,295 students in 2007 — i.e., the gains were 1,945 at the community colleges, 217 at the two-year independents and a 133 net increase across all four-year institutions. All four-year colleges combined in 2007 enrolled 71 percent of the state’s students, but their net increase contributed less than six percent of the total increase this year.

The overall 7.9 percent increase at the two-year independents differed from the other five sectors in seeing both a drop (-3.2%) in full-time enrollment and a major gain (13.6%) in those attending part-time. (Full-time equivalent, or FTE, enrollment is up only 2.1 percent.) All students are full-time at the International College of Hospitality Management (now re-named Clemens College), just over half are full-time at Gibbs (58%) and Legion of Christ (54%) and Goodwin and St. Vincent’s instead are predominantly part-time.

Historical trends for this sector are largely meaningless because of the volatility of two-year colleges. There were six such colleges 15 years ago in 1992 and five colleges in 2007, but only two (Gibbs and St. Vincent’s) operated in both years. During those 15 years (1992-2007), two colleges (Briarwood and Mitchell) became four-year institutions, two closed and three opened after 1992.

CONCLUSIONS

The continuing good news for Connecticut is the tenth consecutive year of enrollment growth and sixth straight year of enrollment records. The bad news (and it may get worse) is that the growth in college students has clearly decelerated with the public sector slowing from 3.2 percent annual average growth from 1998 to 2002 to a 1.0 percent a year average increase for 2002 to 2007.

The transformation over the last decade reflects rapid growth among traditional college students, defined here as full-time undergraduates. The 16 percent growth in headcount enrollment between 1997 and 2007 masks a 42 percent gain in full-time undergraduates and a six percent decrease across all other enrollments. Full-time undergraduates, as a share of total enrollment, rose from 45 percent a decade ago to 56 percent this year.

This growth reflects an increase in the number of Connecticut public high school graduates (growing 38% between 1997 and the estimates for 2007) with this pool of potential freshmen also expected to grow in 2008. In-state public high school graduates are then forecasted to drop 9.4 percent between 2008 and 2016.

While late teens and adults of every age enroll as college freshmen, new in-state high school graduates still are by far the most productive source of freshmen. In fall 2006 (the last year of complete data), 55 percent of first-time freshmen at Connecticut colleges were **both** recent high school graduates and in-state.

Our overriding task is ensuring that those other factors will not be equal and that Connecticut has alternate sources of students to compensate for the decline in new high school graduates as the most productive pool of college students. The projection that this critical pool of students will be smaller in 2016 than it is now in 2007 is troubling since ensuring a highly educated workforce for the future is a major goal for the system.

There are several ways for the state and its colleges to counteract this forecast:

1. **Enroll more Connecticut high school graduates in Connecticut colleges.** The state has made major progress here. The share of college-bound high school graduates remaining in-state grew from 48 percent in 1992 to 58 percent in 2004 (the last year of available data), reflecting a 52 percent surge in students retained in-state. Connecticut still “exports” more freshmen to other states than it imports, but our net out-migration of student was cut almost in half during those 12 years.⁴
2. **Focus on expanding the traditional pool by increasing high school graduation and college readiness rates.** Achieving this goal will require enhanced and coordinated interventions along the educational continuum from early childhood education through high school. Connecticut colleges can play a critical role in this effort.
3. **Retain and graduate a higher share of existing college students at all levels.** Too many students leave without earning their degrees, and it is far more efficient (albeit not as easy) to retain current students than to recruit new ones.

4. **Recruit non-traditional college students.** Although the last 15 years saw a marked rise in the number of full-time undergraduates (many of whom came directly from high school), colleges should strive to recruit older full-time undergraduates and expand the numbers of part-time undergraduates and graduate/first-professional students of any attendance status.
5. **Enroll more recent high school graduates from other states.** The freshmen “imported” from other states has grown by 50 percent between 1992 and 2004.
6. **Recruit more graduate students, particularly in areas of state workforce needs.** This could be accomplished with a combination of increased graduate school recruiting and steering by faculty in upper-class undergraduate courses.

ENDNOTES

1. First-professional programs train lawyers, medical doctors (broadly defined) and clergy and enroll students at only five of the state's 47 colleges and universities.
2. The state component of the public sector has three parts: a) the University of Connecticut (the main Storrs campus, three branch campuses and the medical and dental schools at the Health Center in Farmington); b) four Connecticut State Universities (Central, Eastern, Southern and Western) and c) 12 Community Colleges. The Coast Guard Academy is *sui generis* as a federal institution; see page 10 for Charter Oak State College, which is the 19th public college. The 28 independent institutions consist of: a) four national independents (recruiting students from a national pool); b) 19 regional independents and c) five two-year independents.
3. The state technical colleges (Greater New Haven, Hartford, Norwalk, Thames Valley and Waterbury) were merged with the community college system, effective for fall 1993 enrollment reporting. To preserve historical comparability, the enrollments before 1993 at each of the former technical colleges were folded into the partner community college with which it merged.
4. August 2005 report, "Most Connecticut Students Choose Connecticut Colleges" (<http://www.ctdhe.org/info/pdfs/2005MigrationReport.pdf>). The Department of Higher Education collects data every fall on the residence of first-time freshmen matriculating at Connecticut colleges, and thus knows the numbers that are both enrolled in-state and imported from other states. However, the federal government collects that data (from which we learn how many Connecticut residents are exported to other states) only in even-numbered years. The fall 2006 data from other states will be available in the winter of 2007-08.

APPENDIX

TABLE 1
Fall 2007 Final Enrollment: Connecticut Colleges and Universities

	Undergraduate			Graduate			First-Professional			Fall 2007 Totals			Fall 2006 Total	Change	Pct. Change
	Full-Time	Part-Time	Total	Full-Time	Part-Time	Total	Full-Time	Part-Time	Total	Full-Time	Part-Time	TOTAL			
PUBLIC INSTITUTIONS															
<i>University of Connecticut</i>	18,730	2,116	20,846	3,618	2,807	6,425	1,177	229	1,406	23,525	5,152	28,677	28,481	196	0.7%
Storrs	15,615	733	16,348	3,618	2,807	6,425	693	226	919	19,926	3,766	23,692	23,557	135	0.6%
Avery Point	545	203	748							545	203	748	671	77	11.5%
Tri-Campus*	1,799	681	2,480							1,799	681	2,480	2,485	-5	-0.2%
Stamford	771	499	1,270							771	499	1,270	1,281	-11	-0.9%
Health Center							484	3	487	484	3	487	487	0	0.0%
<i>Connecticut State University</i>	23,122	5,442	28,564	1,596	5,224	6,820				24,718	10,666	35,384	35,795	-411	-1.1%
Central	7,658	2,046	9,704	520	1,882	2,402				8,178	3,928	12,106	12,144	-38	-0.3%
Eastern	3,975	851	4,826	68	243	311				4,043	1,094	5,137	5,239	-102	-1.9%
Southern	7,114	1,401	8,515	910	2,505	3,415				8,024	3,906	11,930	12,326	-396	-3.2%
Western	4,375	1,144	5,519	98	594	692				4,473	1,738	6,211	6,086	125	2.1%
<i>Community Colleges</i>	18,179	30,255	48,434							18,179	30,255	48,434	46,489	1,945	4.2%
Asnuntuck	617	1,175	1,792							617	1,175	1,792	1,638	154	9.4%
Capital	1,027	2,699	3,726							1,027	2,699	3,726	3,550	176	5.0%
Gateway	2,187	3,778	5,965							2,187	3,778	5,965	5,824	141	2.4%
Housatonic	1,616	2,859	4,475							1,616	2,859	4,475	4,431	44	1.0%
Manchester	2,940	3,544	6,484							2,940	3,544	6,484	6,094	390	6.4%
Middlesex	1,037	1,586	2,623							1,037	1,586	2,623	2,474	149	6.0%
Naugatuck Valley	2,490	3,476	5,966							2,490	3,476	5,966	5,659	307	5.4%
Northwestern CT	548	1,084	1,632							548	1,084	1,632	1,544	88	5.7%
Norwalk	2,197	4,034	6,231							2,197	4,034	6,231	6,040	191	3.2%
Quinebaug Valley	661	1,185	1,846							661	1,185	1,846	1,779	67	3.8%
Three Rivers	1,316	2,542	3,858							1,316	2,542	3,858	3,793	65	1.7%
Tunxis	1,543	2,293	3,836							1,543	2,293	3,836	3,663	173	4.7%
TOTAL, STATE INSTITUTIONS	60,031	37,813	97,844	5,214	8,031	13,245	1,177	229	1,406	66,422	46,073	112,495	110,765	1,730	1.562%
U.S. Coast Guard Academy	963		963							963		963	995	-32	-3.2%
TOTAL, PUBLIC INSTITUTIONS	60,994	37,813	98,807	5,214	8,031	13,245	1,177	229	1,406	67,385	46,073	113,458	111,760	1,698	1.519%

*The Tri-Campus total of 2,480 consists of 1,284 students in Hartford (no change vs. fall 2006), 910 in Waterbury (up 20 students over last year), and 286 in Torrington (down 25 students.)

NOTE: Charter Oak State College enrolled 1,557 undergraduate students -- 81 full-time (in a first for Charter Oak) and 1,476 part-time. Some of its students are enrolled in other Connecticut colleges and thus counted in this table. The 1,557 total represents a 154 student (or 9.0%) decline from fall 2006 in headcount enrollment.

APPENDIX

TABLE 1, Continued
Fall 2007 Final Enrollment: Connecticut Colleges and Universities

	Undergraduate			Graduate			First-Professional			Fall 2007 Totals			Fall 2006 Total	Change	Pct. Change
	Full- Time	Part- Time	Total	Full- Time	Part- Time	Total	Full- Time	Part- Time	Total	Full- Time	Part- Time	TOTAL			
INDEPENDENT INSTITUTIONS															
National Independents	12,058	264	12,322	4,964	537	5,501	1,229	19	1,248	18,251	820	19,071	19,020	51	0.3%
Connecticut College	1,802	55	1,857	8	4	12				1,810	59	1,869	1,886	-17	-0.9%
Trinity College	2,171	166	2,337	6	183	189				2,177	349	2,526	2,499	27	1.1%
Wesleyan University	2,796	21	2,817	195	210	405				2,991	231	3,222	3,220	2	0.1%
Yale University	5,289	22	5,311	4,755	140	4,895	1,229	19	1,248	11,273	181	11,454	11,415	39	0.3%
Regional Independents	25,516	4,844	30,360	5,261	7,071	12,332	520	146	666	31,297	12,061	43,358	43,029	329	0.8%
Albertus Magnus College	1,593	93	1,686	250	98	348				1,843	191	2,034	2,186	-152	-7.0%
Briarwood College	422	241	663							422	241	663	649	14	2.2%
Fairfield University	3,484	546	4,030	235	759	994				3,719	1,305	5,024	5,091	-67	-1.3%
Graduate Institute, The				254		254				254		254	221	33	14.9%
Hartford Seminary				39	120	159				39	120	159	173	-14	-8.1%
Holy Apostles College	17	29	46	9	159	168	70		70	96	188	284	270	14	5.2%
Lyme Academy College of Fine Arts	91	47	138	1		1				92	47	139	151	-12	-7.9%
Mitchell College	751	143	894							751	143	894	790	104	13.2%
Paier College of Art	168	81	249							168	81	249	248	1	0.4%
Post University	713	501	1,214	5	52	57				718	553	1,271	1,596	-325	-20.4%
Quinnipiac University	5,455	310	5,765	558	509	1,067	246	138	384	6,259	957	7,216	7,341	-125	-1.7%
Rensselaer at Hartford				35	695	730				35	695	730	743	-13	-1.7%
Sacred Heart University	3,465	761	4,226	564	1,011	1,575				4,029	1,772	5,801	5,756	45	0.8%
St. Basil's College	12	3	15							12	3	15	18	-3	-16.7%
St. Joseph College	739	256	995	132	646	778				871	902	1,773	1,803	-30	-1.7%
St. Thomas Seminary					36	36					36	36	18	18	100.0%
University of Bridgeport	1,225	566	1,791	1,664	1,085	2,749	204	8	212	3,093	1,659	4,752	4,018	734	18.3%
University of Hartford	4,796	841	5,637	539	1,114	1,653				5,335	1,955	7,290	7,308	-18	-0.2%
University of New Haven	2,585	426	3,011	976	787	1,763				3,561	1,213	4,774	4,649	125	2.7%
Two-Year Independents	911	2,057	2,968							911	2,057	2,968	2,751	217	7.9%
Gibbs College	530	389	919							530	389	919	765	154	20.1%
Goodwin College	197	1,243	1,440							197	1,243	1,440	1,365	75	5.5%
Int'l College of Hospitality Management**	64		64							64		64	40	24	60.0%
Legion of Christ College of Humanities	66	55	121							66	55	121	106	15	14.2%
St. Vincent's College	54	370	424							54	370	424	475	-51	-10.7%
TOTAL, INDEPENDENTS	38,485	7,165	45,650	10,225	7,608	17,833	1,749	165	1,914	50,459	14,938	65,397	64,800	597	0.9%
TOTAL, ALL INSTITUTIONS	99,479	44,978	144,457	15,439	15,639	31,078	2,926	394	3,320	117,844	61,011	178,855	176,560	2,295	1.3%

**Name changed in October 2007 to Clemens College.