



## FALL 2005 COLLEGE AND UNIVERSITY ENROLLMENT IN CONNECTICUT — COMPREHENSIVE REPORT —

Enrollment at Connecticut's 47 colleges and universities reached an all-time record of 174,273 in fall 2005 (see Tables 1 and 3 in the set of tables appearing at the end of the report).<sup>1</sup> A November 2005 report titled, *Fall 2005 College and University Headcounts in Connecticut*,<sup>2</sup> analyzed headcount enrollment by status, level, institution and sector. This broader report presents general trends in headcount enrollment; analyzes data on full-time equivalent (FTE) enrollment and provides demographic details on residence, race, freshmen, migration of recent high school graduates, gender and age.

### GENERAL TRENDS

The fall 2005 total of 174,273 students is the highest ever for Connecticut and represents a fourth consecutive year of record enrollment. It also is the eighth consecutive year of growth since 1997, when total enrollment (154,059) was the lowest of the last quarter century.

However, this year's increase of 1,533 students (0.9%) over 2004 is the third consecutive year of rather tepid growth. The average annual growth rate of 0.9 percent in the three years since 2002 is barely one-third of the 2.4 percent average annual growth between 1998 and 2002. Growth in freshmen counts is slowing as well, up only 0.1 percent in 2005.

The overall 2005 growth rate, with both the public and independent sectors experiencing similar growth, masks a 2.3 percent increase in full-time enrollment and a 1.6 percent decline in part-time enrollment. In 1992, full-time students were a slight majority (50.7%) of total enrollment, but by 2005 reached a solid 65 percent.

Even more striking is the growth in traditional students (defined here as full-time undergraduates under age 25) between 1993 and 2005. As shown in the table, total enrollment saw a modest seven percent gain over the 12 years, but the

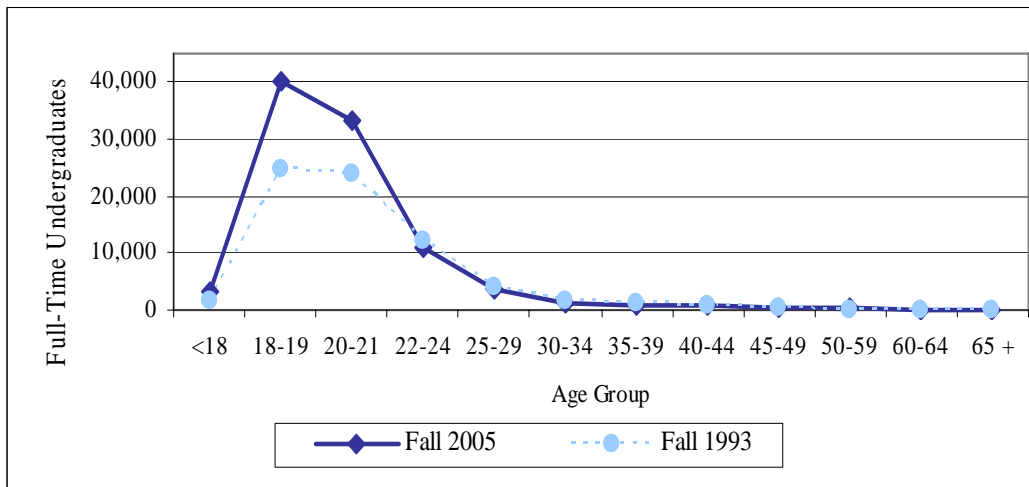
41 percent growth among traditional students and 14 percent drop for all other students changed the demographic portrait of Connecticut higher education.

	<u>1993</u>	<u>2005</u>	<u># Change</u>	<u>%Change</u>
<b>Traditional undergraduates (full-time under age 25)</b>	<b>62,049</b>	<b>87,619</b>	<b>25,570</b>	<b>41%</b>
All other students	100,318	86,638	-13,680	-14%
Total	162,367	174,257	11,890	7%
<b>Traditional as % of total</b>	<b>38.2%</b>	<b>50.3%</b>		

Traditional students were not much more than a third of total enrollment in 1993, but became a majority in 2005 for the first time since data collection began in 1987.<sup>3</sup>

The graph below illustrates the dramatic increase in the number of these younger full-time undergraduates. The gap between the 1993 and 2005 lines for those under age 25 equals the net increase of 25,570 shown in the table.

**Number/Age of Full-Time Undergraduates, Fall 2005 vs. Fall 1993**



Public institutions enrolled 64 percent of all students in 2005, and the independent institutions captured the other 36 percent. The 12 community colleges are the largest sector of higher education in Connecticut, enrolling 27 percent of all students, and the 18 regional independent colleges, with 24 percent, are the second largest sector. These two sectors combined enroll a slight majority (51%) of college students in Connecticut.

	<b>Total Enrollment Fall 2005</b>	<b>Percent of State Total</b>
<b>Public Institutions</b>		
University of Connecticut	28,083	16%
Connecticut State University	35,493	20%
Community Colleges	46,227	27%
U.S. Coast Guard Academy	1,005	1%
<b>Subtotal</b>	<b>110,808</b>	<b>64%</b>
<b>Independent Institutions</b>		
National Independents	19,056	11%
Regional Independents	41,761	24%
Two-Year Independents	2,648	2%
<b>Subtotal</b>	<b>63,465</b>	<b>36%</b>
<b>Statewide Total</b>	<b>174,273</b>	<b>100%</b>

Total fall 2005 enrollment consists of 81 percent undergraduates, 17 percent graduate students and two percent first-professional students (medical doctors, broadly defined; lawyers and clergy). An overwhelming majority of both first-professional students (88%) and undergraduates (68%) are enrolled full-time and almost a majority of graduate students (48%) attend full-time.

## **FULL-TIME EQUIVALENT (FTE) ENROLLMENT**

FTE enrollments are more standardized and comparable across institutions, and are better measures of the resources needed to provide instructional services. Table 2 displays both headcount and FTE data by level for every institution, along with the percent change for each total since last year.

The statewide headcount enrollment of 174,257 translates into 132,461 FTE enrollment, meaning that the “average” student is just over three-fourths full-time (76%). The 12 community colleges, whose headcount enrollment of 46,227 (27% of the state total) made it the largest of the six major sectors, falls to third place in its FTE enrollment of 25,744 -- 19 percent of the state total, behind the 26 percent share of statewide FTE for the regional independents and the 20 percent for the Connecticut State University (CSU).

The 2005 increase of 1.8 percent in FTE enrollment, compared to a 0.9 percent rise in headcount enrollment, indicates that average credit loads are growing. That is no surprise given the 2.3 percent increase in full-time headcount and the 1.6 percent decline in part-time headcount.

The average FTE per headcount student by sector this year are:

- 97 percent at the national independents (i.e., virtually all full-time)
- 84 percent at UConn
- 83 percent at the regional independents
- 76 percent at CSU
- 56 percent at the community colleges

Table 3 (headcount) and Table 4 (FTE) present 15 years of comparative enrollment data.

## **DEMOGRAPHIC PROFILE**

**RESIDENCE.** Total headcount enrollment in fall 2005 is comprised of 74 percent Connecticut residents, 22 percent out-of-state students and four percent non-resident aliens. (Non-resident aliens are non-citizens who are in the U.S. on student visas.)

The number of in-state students rose in each of the last seven years, but generally at a slower rate than overall enrollment to yield a decline in the in-state share. Out-of-state students, both in numbers and as a share of the total, rose in each of the last nine years.

For the first time in our 26 years of complete residence data, non-resident alien enrollment fell three years in row — down four percent in

	<u>Connecticut</u>	<u>Out-of-State</u>	<u>Non-Resident Aliens</u>	<u>Total</u>
1985	81%	17%	2%	100%
1995	79%	17%	4%	100%
2005	74%	22%	4%	100%

2003, six percent in 2004, and two percent in 2005. Greater difficulty in obtaining student visas (either directly or as a deterrent to trying to study in the U.S.) is likely shrinking the size of our international enrollment as is the growth of higher education in developing countries.

Two trends strongly suggest that the number of non-resident aliens will continue to decline in the near future, absent a change in international access to U.S. colleges. First, the decreases in the numbers of non-resident aliens have generally been greater among first-time students than among continuing students and, therefore, fewer students are entering the pipeline. Second, the increase in degrees conferred to non-resident aliens in 2004-05, despite the three-year decline in non-resident alien enrollment, suggests that foreign students are hurrying to get their degree to avoid the need for student visas renewals and/or obtain work permits or permanent-resident status. Thus, the students now enrolled are departing more quickly.

Table 5 shows a complete breakdown of residence by level and sector during the last six years. At the undergraduate level in recent years, the in-state share of students ranges from virtually all (i.e., 97%-98%) at the community colleges and the UConn regional campuses to less than 15 percent at the national independents (Connecticut College, Trinity, Wesleyan and Yale).

The regional independents (i.e., the four-year independents, excluding Connecticut College, Trinity, Wesleyan and Yale) for the first time had state residents as a minority of their undergraduates (49.8%). The share of in-state students among undergraduates in this sector was 70 percent in 1988, fell below 60 percent in 1997 and became a minority this year. Total undergraduate enrollment at the regional independents increased four percent over that time, but that modest overall increase masks in-state enrollment decreases of 25 percent and out-of-state enrollment increases of 72 percent (8,729 to 14,977).

Over the last eight years at the UConn Storrs campus, out-of-state undergraduates have more than doubled in numbers (from 1,683 in 1997 to 3,730 in 2005) and went from 15 percent to 23 percent of all undergraduates. The number of in-state undergraduates rose every year since 1995 — from 9,569 to 12,221 in 2005. The in-state share of the total, however, fell from 84 percent to 76 percent, and the in-state headcount of 12,221 this year is barely above the peak of 12,217 in 1988. Over the last 17 years, total undergraduate enrollment rose more than 15 percent, while in-state undergraduates increased by only five students.

**RACE/ETHNICITY.** Data on race and ethnicity among college students in Connecticut for fall 2005 appears in Tables 6 and 6-A (undergraduate enrollments only). Total enrollment of minority students is just over one in five (21.7%) among all students and two percentage points higher (23.7%) among undergraduates.<sup>4</sup> Minority students also are more heavily concentrated in the public sector than at the independent colleges.

Between 1976 and 2005, the total number of minority students more than quadrupled, with both African Americans and American Indians more than doubling, Hispanics increasing almost by a factor of seven and Asian Americans increasing by a factor of 10. Because total enrollment saw an increase of 19 percent over this 29-year period, the increases in the share of minority enrollment (see exhibit below) are only slightly less impressive.

	<b>Fall Enrollment in Connecticut</b>			<b>CT Population U.S. Census</b>	
	<b>1976</b>	<b>1990</b>	<b>2005</b>	<b>All Ages</b>	<b>18 or Older</b>
African American	4.4%	5.6%	9.7%	8.7%	7.9%
Hispanic/Latino	1.3%	3.2%	7.5%	9.4%	8.0%
Asian American	0.5%	2.5%	4.1%	2.4%	2.4%
American Indian	0.2%	0.2%	0.4%	0.2%	0.2%
<b>Total Minority</b>	<b>6.4%</b>	<b>11.6%</b>	<b>21.7%</b>	<b>20.7%</b>	<b>18.5%</b>

As seen above, the overall minority share among college students in fall 2005 (21.7%) is slightly over the share in the general Connecticut population (20.7%), but significantly higher than that same share among the adult population (18.5%).

Among the four minority groups, Hispanics or Latinos are the only group whose representation among college students still is less than their representation in the general population, under either definition. The share of African Americans among college students (9.7%) is not much higher than their share among the general population (8.7%), but is significantly higher than the adult population (7.9%).

Minority students are more underrepresented among degree recipients than they are among general college students. In fall 2004, the minority share of enrollment was 21.1 percent, while at the end of that academic year, the minority share among those receiving degrees or certificates was 16.7 percent. Based on past history, however, recent gains in minority enrollment should soon result in increased degree production.<sup>5</sup>

**FIRST-TIME FRESHMEN.** A total of 27,842 students enrolled as first-time freshmen in fall 2005. (See Tables 7 & 8.) Of that total, 24,141 (87%) were full-time. Freshmen came from all 50 states, D.C., Puerto Rico, Virgin Islands, Guam and foreign countries.

The growth in first-time freshmen is slowing, perhaps as a harbinger of 2008 which is expected to be the peak year for Connecticut high school graduates. After rising 19 percent in the five years between 1999 and 2004, the overall growth in freshmen was only 0.1 percent this year.

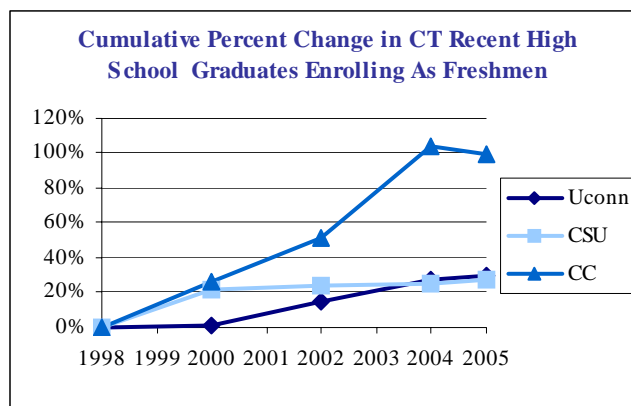
The Connecticut State University continues to struggle with its freshmen classes as the number fell by 4.3 percent or 199 freshmen. After the incoming freshmen class registered a cumulative 44 percent increase between 1995 and 2001, freshmen saw a 4.4 percent net decrease in their numbers in the four years since 2001.

More than four in five (82%) of first-time college freshmen across the state graduated from high school within the last year, two-thirds (68%) of all freshmen were from Connecticut, and a

slight majority (53%) were both recent high school graduates and from in-state. As noted, that overall pool of in-state, high school graduates is expected to peak in the year 2008.

Since complete reporting of this data began in the late 90s, the share of first-time freshmen who were both in-state and recent high school graduates ranged between 44 and 48 percent. The last three years were the first time that a majority of incoming freshmen were both from in-state and recent high school graduates.

Within the public sector, however, the increases in in-state and recent high school graduate freshmen are far from uniform as shown in the graph to the right. Since 1998, the community colleges nearly doubled their numbers (2,251 to 5,194), while UConn had only a 30 percent increase (2,490 to 3,234) and CSU just a 28 percent change (3,009 to 3,850).



**RECENT HIGH SCHOOL GRADUATES.** The data above on first-time freshmen focuses on the “receiving” end — i.e., of the freshmen enrolling in Connecticut colleges, how many are from in state? This data on recent high school graduates instead looks at the “sending” end — i.e., of the Connecticut high school graduates going directly to college, where in the U.S. do they enroll? The latter data yields two sets of numbers — an indicator of likely enrollment trends in the near future and statewide data on in-state retention.

The latest year of complete data on interstate migration of recent high school graduates is 2004.<sup>6</sup> In fall of that year, some 25,268 Connecticut residents graduating in the high school class of 2004 enrolled as first-time freshmen in the U.S. — 14,533 enrolled in a Connecticut college (58%) and the other 10,735 matriculated elsewhere (42%).

**CONNECTICUT RESIDENTS  
RECENT (LAST 12 MONTHS) HIGH SCHOOL GRADUATES  
ENROLLED AS FIRST-TIME FRESHMEN IN THE U.S.**

	<u>1992</u>	<u>1994</u>	<u>1996</u>	<u>1998</u>	<u>2000</u>	<u>2002</u>	<u>2004</u>
Total in the U.S.	19,768	19,343	19,577	21,399	22,812	23,528	25,268
Total remaining in Connecticut	9,550	9,011	9,202	10,429	11,824	12,796	14,533
Total attending elsewhere in U.S.	10,218	10,332	10,375	10,970	10,988	10,732	10,735
<b>Percent remaining in Connecticut</b>	<b>48%</b>	<b>47%</b>	<b>47%</b>	<b>49%</b>	<b>52%</b>	<b>54%</b>	<b>58%</b>

Connecticut has retained an increasingly larger majority of its college-bound high school graduates from 2000 onward after retaining less than half throughout the 1990s. These gains occurred despite movement in the opposite direction in the regional independent sector where 45 percent were in-state in 1992, but only 32 percent were in-state in 2004. As illustrated above, the community colleges appear to be the major recipient of these gains.

**GENDER.** The good news in this data is that women finally became a majority (50.7%) at the first-professional level in 2005. In 1978, females already were just over 50 percent among total, undergraduate, and graduate students, but only 30 percent of first-professional students. First-professional females breached the 40 percent barrier in 1986, the 45 percent barrier in 2000 and the 50 percent barrier this year.

More striking news is the overall gender imbalance in higher education enrollment. Females in Connecticut colleges in fall 2005 (101,801) are 58.4 percent of total enrollment, with both the number and percentage representing all-time records (see Tables 9 & 10).

The gender ratio in higher education differs significantly from that in the general population of older teenagers and adults. The 15-34 age group provides an overwhelming majority (84%) of all college students in Connecticut in 2005, and yet that age group in the general Connecticut population (2000 Census) had slightly fewer females (49.9%) than males. The overall 58.4 percent of females among in-state college students seems even more remarkable. Even among those age 60 or older (which provide less than 1% of collegiate enrollment), the female share in the general population (58.1%) is less than the female share among all college students.

The changes in the overall gender mix over the last 30 years are summarized to the right. The share of males and females in the general population have remained both extremely stable and virtually

	<u>1976</u>	<u>2005</u>	<u>Change</u>	<u>Percent Change</u>
Female Enrollment	70,705	101,801	31,096	44%
Male Enrollment	75,853	72,456	-3,397	-4%
<b>Total</b>	<b>146,558</b>	<b>174,257</b>	<b>27,699</b>	<b>19%</b>

a 50-50 split over those three decades. Moreover, at least among potential college students under age 25, the genders do not significantly differ in the socio-economic status (SES) factors associated with college attendance. Yet, one gender grew in college enrollment by 44 percent while the other gender fell in its college enrollment by four percent. This gender imbalance also appears in national enrollment data, although it is slightly more pronounced here.

This decisive female majority in Connecticut college enrollment also appears in Connecticut degree recipients, with women receiving 60 percent of all degrees and awards during 2004-05 compared to their 58 percent share among all enrollment at the start of that year.<sup>5</sup>

**AGE.** Connecticut undergraduates in 2005 tend to be younger than their counterparts from previous years (see Tables 10A & 11). The median age among all students in fall 2005 is just barely under 22. The median ages from low to high are 20 for full-time undergraduates, 27 for full-time graduate/first-professional students, 28 for part-time undergraduates and 32 for part-time graduate/first-professional students.

The percent of undergraduates age 25 or older peaked at 37 percent in 1994 and declined each year since then to 25 percent in 2005. The share of undergraduates age 25 or older differs greatly by sector ranging from 56 percent at the two-year independents to two percent at the national independents.

Despite their decline in share, students age 25 or older are an important segment in higher education in Connecticut. They represent 34 percent of all in-state enrollment in Connecticut

— i.e., 25 percent of undergraduate and 74 percent of combined graduate and first-professional students. Those age 25 and over are a majority of undergraduates at six of the 45 colleges enrolling undergraduates, a majority of graduate students at all 23 of the colleges enrolling graduate students and a majority of total enrollment at 11 of the 49 colleges (including UConn branches separately) that provide the age of their students.

The U.S. 2000 Census counted 2.29 million Connecticut residents age 25 or older and just over 400,000 in the 15-24 age bracket. Therefore, the estimated college attendance rates are a mere 2.6 percent for those 25 or older, but 28.2 percent for those age 15 to 24. Those in the younger age bracket are almost 11 times as likely to enroll in college as those in the older age group.

## SUMMARY

Connecticut breached several symbolic barriers in 2005. Full-time undergraduates under age 25 became a majority of total college enrollment for the first time in almost 20 years of data, and females passed that majority threshold among first-professional students. In-state students became a minority of undergraduate enrollment at the regional independents. Finally, non-resident alien enrollment fell for the third consecutive year.

The major **positive** findings from the fall 2005 enrollment data are:

- It is the fourth consecutive record year for total headcount and the eighth consecutive year of growth.
- It is the seventh consecutive record year for full-time headcount and the 11th consecutive year of growth.
- It is the sixth consecutive record year of full-time equivalent (FTE) enrollment and the eighth consecutive year of growth.
- There are increases in both numbers and percentages of minority enrollments, with African Americans, Hispanics/Latinos and Asian Americans all seeing gains in both.
- Fifty-three percent of first-time freshmen were both recent high school graduates and Connecticut residents.

Areas of some **concern** are:

- Virtually no net growth in first-time freshmen.
- A continuing gender imbalance that is approaching three females for every two males.
- The decline in enrollment of non-resident aliens for a third straight year.

The developments that present **mixed implications** include:

- Increasing share of full-time enrollment.
- Growth among traditional students.
- Growth among younger students.

The positive implications of these trends are efficiency and the increased likelihood of timely degree completion. The negative implications reflect concerns about access — an overemphasis on full-time and/or “day” students should not preclude those who attend part-time or on nights/weekends.

The negative implications also relate to the number of new public high school graduates in Connecticut because they are projected to peak in 2008. As the number of high school graduates levels off in the coming years, Connecticut colleges will need to develop new strategies to maintain enrollments. The future looks good provided that Connecticut colleges and universities continue to adapt to changing demographic and social circumstances.

## ENDNOTES

1. The University of Connecticut, with its main campus in Storrs, counts as one institution, but includes the UConn Health Center (its stand-alone medical and dental school in Farmington) and the three full UConn branch campuses in Avery Point, Stamford and Tri-Campus. (Tri-Campus is further broken down into its campuses in Hartford, Torrington and Waterbury.)

Not included in the statewide totals is Charter Oak State College, the state's external degree program, which enrolled 1,902 part-time undergraduates in fall 2005. The time-series data throughout this report consistently excludes Charter Oak. Many Charter Oak students are simultaneously enrolled elsewhere in Connecticut and already are in the statewide total and would be double counted if the Charter Oak totals were included in the statewide tallies. We are, however, working with Charter Oak on how best to incorporate their non-double-counted students into that total.

2. *Fall 2005 College and University Headcounts in Connecticut*; November 2005, <http://www.ctdhe.org/info/pdfs/2005/2005HeadcountEnrollments.pdf>. The current statewide headcount enrollment of 174,273 is lower than the 174,275 reported in that document and reflects a correction from Trinity College producing that net loss of two graduate students and eight undergraduate students switched from part-time to full-time status. No substantive differences in that earlier report would result from this correction.
3. This report excludes the 16 students enrolled at St. Thomas Seminary, for which complete FTE and demographic details are not available. With those 16 part-time graduate students excluded, the statewide total in all subsequent tables is 174,257 rather than the 174,273 total already introduced.
4. This data understates minority enrollment because 3.7 percent of all students in fall 2005 are non-resident aliens here on student visas (and could be of any race) and 8.1 percent were reported as race/ethnicity unknown. Unless all of these 11.8 percent with unknown race are White non-Hispanic, the minority share would be higher.
5. *2004-05 Degrees Conferred by Connecticut Institutions of Higher Education*, December 2005, <http://www.ctdhe.org/info/pdfs/2005/2005DegreesConferred.pdf>.
6. Although we get timely data on the residence of first-time freshmen entering Connecticut colleges every year, the national data (from which we get Connecticut residents who enroll in other states) is only collected for the fall semester of even-numbered years. That preliminary data is from the Integrated Postsecondary Education Data System (IPEDS) maintained by the National Center for Education Statistic (NCES) in the U.S. Department of Education.

TABLE 1  
Fall 2005 Final Enrollment: Connecticut Colleges and Universities

	Undergraduate			Graduate			First-Professional			Fall 2005 Totals			Fall 2004 Total	Change	Pct. Change
	Full-Time	Part-Time	Total	Full-Time	Part-Time	Total	Full-Time	Part-Time	Total	Full-Time	Part-Time	TOTAL			
<b>PUBLIC INSTITUTIONS</b>															
University of Connecticut	18,070	2,455	20,525	3,395	2,785	6,180	1,159	219	1,378	22,624	5,459	28,083	27,579	504	1.8%
Storrs	15,296	816	16,112	3,395	2,785	6,180	679	214	893	19,370	3,815	23,185	22,694	491	2.2%
Avery Point	449	281	730							449	281	730	773	-43	-5.6%
Tri-Campus*	1,612	830	2,442							1,612	830	2,442	2,391	51	2.1%
Stamford	713	528	1,241							713	528	1,241	1,236	5	0.4%
Health Center							480	5	485	480	5	485	485	0	0.0%
Connecticut State University	21,895	6,032	27,927	1,803	5,763	7,566				23,698	11,795	35,493	35,537	-44	-0.1%
Central	7,445	2,233	9,678	531	2,106	2,637				7,976	4,339	12,315	12,320	-5	-0.04%
Eastern	3,751	994	4,745	95	273	368				3,846	1,267	5,113	5,156	-43	-0.8%
Southern	6,697	1,612	8,309	1,083	2,766	3,849				7,780	4,378	12,158	12,177	-19	-0.2%
Western	4,002	1,193	5,195	94	618	712				4,096	1,811	5,907	5,884	23	0.4%
Community Colleges	16,385	29,842	46,227							16,385	29,842	46,227	45,743	484	1.1%
Asnuntuck	526	957	1,483							526	957	1,483	1,504	-21	-1.4%
Capital	927	2,646	3,573							927	2,646	3,573	3,436	137	4.0%
Gateway	1,809	3,930	5,739							1,809	3,930	5,739	5,595	144	2.6%
Housatonic	1,477	2,994	4,471							1,477	2,994	4,471	4,701	-230	-4.9%
Manchester	2,713	3,422	6,135							2,713	3,422	6,135	5,906	229	3.9%
Middlesex	876	1,410	2,286							876	1,410	2,286	2,354	-68	-2.9%
Naugatuck Valley	2,211	3,456	5,667							2,211	3,456	5,667	5,514	153	2.8%
Northwestern CT	527	1,042	1,569							527	1,042	1,569	1,516	53	3.5%
Norwalk	2,015	4,021	6,036							2,015	4,021	6,036	5,790	246	4.2%
Quinebaug Valley	643	1,071	1,714							643	1,071	1,714	1,721	-7	-0.4%
Three Rivers	1,173	2,487	3,660							1,173	2,487	3,660	3,764	-104	-2.8%
Tunxis	1,488	2,406	3,894							1,488	2,406	3,894	3,942	-48	-1.2%
<b>TOTAL, STATE INSTITUTIONS</b>	<b>56,350</b>	<b>38,329</b>	<b>94,679</b>	<b>5,198</b>	<b>8,548</b>	<b>13,746</b>	<b>1,159</b>	<b>219</b>	<b>1,378</b>	<b>62,707</b>	<b>47,096</b>	<b>109,803</b>	<b>108,859</b>	<b>944</b>	<b>0.9%</b>
U.S. Coast Guard Academy	1,005		1,005							1,005		1,005	994	11	1.1%
<b>TOTAL, PUBLIC INSTITUTIONS</b>	<b>57,355</b>	<b>38,329</b>	<b>95,684</b>	<b>5,198</b>	<b>8,548</b>	<b>13,746</b>	<b>1,159</b>	<b>219</b>	<b>1,378</b>	<b>63,712</b>	<b>47,096</b>	<b>110,808</b>	<b>109,853</b>	<b>955</b>	<b>0.9%</b>

\*The Tri-Campus total of 2,422 this year consists of 1,222 students in Hartford (up 10 over fall 2004 enrollment), 893 in Waterbury (up 83 students over last year), and 327 in Torrington (down 42 students.)

NOTE: Charter Oak State College enrolled 1,902 part-time undergraduate students, some of whom are enrolled elsewhere in CT and are counted in their other institutions above. Those 1,902 represent a 407 student (or 27%) increase from fall 2004.

TABLE 1, Continued  
 Fall 2005 Final Enrollment: Connecticut Colleges and Universities

	Undergraduate			Graduate			First-Professional			Fall 2005 Totals			Fall 2004 Total	Change	Pct. Change
	Full- Time	Part- Time	Total	Full- Time	Part- Time	Total	Full- Time	Part- Time	Total	Full-Time	Part- Time	TOTAL			
<b>INDEPENDENT INSTITUTIONS</b>															
National Independents	<b>12,017</b>	<b>330</b>	<b>12,347</b>	<b>4,909</b>	<b>554</b>	<b>5,463</b>	<b>1,222</b>	<b>24</b>	<b>1,246</b>	<b>18,148</b>	<b>908</b>	<b>19,056</b>	<b>18,953</b>	<b>103</b>	<b>0.5%</b>
Connecticut College	1,808	79	1,887	6	5	11				1,814	84	1,898	1,905	-7	-0.4%
Trinity College	2,109	178	2,287	6	177	183				2,115	355	2,470	2,390	80	3.3%
Wesleyan University	2,750	14	2,764	193	248	441				2,943	262	3,205	3,217	-12	-0.4%
Yale University	5,350	59	5,409	4,704	124	4,828	1,222	24	1,246	11,276	207	11,483	11,441	42	0.4%
Regional Independents	<b>24,781</b>	<b>5,060</b>	<b>29,841</b>	<b>4,445</b>	<b>6,690</b>	<b>11,135</b>	<b>635</b>	<b>150</b>	<b>785</b>	<b>29,861</b>	<b>11,900</b>	<b>41,761</b>	<b>41,196</b>	<b>565</b>	<b>1.4%</b>
Albertus Magnus College	1,695	87	1,782	366	82	448				2,061	169	2,230	2,361	-131	-5.5%
Briarwood College	389	258	647							389	258	647	637	10	1.6%
Fairfield University	3,485	588	4,073	243	857	1,100				3,728	1,445	5,173	5,060	113	2.2%
Graduate Institute, The				225		225				225		225	160	65	40.6%
Hartford Seminary				33	136	169				33	136	169	147	22	15.0%
Holy Apostles College	9	32	41	13	160	173	40		40	62	192	254	266	-12	-4.5%
LymeAcademy College of Fine Art	80	68	148	1	4	5				81	72	153	164	-11	-6.7%
Mitchell College	644	83	727							644	83	727	700	27	3.9%
Paier College of Art	191	86	277							191	86	277	306	-29	-9.5%
Post University	664	437	1,101							664	437	1,101	1,198	-97	-8.1%
Quinnipiac University	5,286	420	5,706	555	488	1,043	399	145	544	6,240	1,053	7,293	7,220	73	1.0%
Rensselaer at Hartford				32	674	706				32	674	706	806	-100	-12.4%
Sacred Heart University	3,244	860	4,104	493	963	1,456				3,737	1,823	5,560	5,657	-97	-1.7%
St. Basil's College	18	2	20							18	2	20	11	9	81.8%
St. Joseph College	871	288	1,159	143	556	699				1,014	844	1,858	1,792	66	3.7%
St. Thomas Seminary					16	16					16	16	18	-2	-11.1%
University of Bridgeport	1,247	429	1,676	886	863	1,749	196	5	201	2,329	1,297	3,626	3,274	352	10.8%
University of Hartford	4,657	935	5,592	568	1,100	1,668				5,225	2,035	7,260	7,246	14	0.2%
University of New Haven	2,301	487	2,788	887	791	1,678				3,188	1,278	4,466	4,173	293	7.0%
Two-Year Independents	798	1,850	2,648							798	1,850	2,648	2,738	-90	-3.3%
Gibbs College	524	426	950							524	426	950	1,207	-257	-21.3%
Goodwin College	132	1,087	1,219							132	1,087	1,219	940	279	29.7%
Int'l College of Hospitality Manage	40		40							40		40	93	-53	-57.0%
Legion of Christ College of Human	25		25							25		25	91	-66	-72.5%
St. Vincent's College	77	337	414							77	337	414	407	7	1.7%
<b>TOTAL, INDEPENDENTS</b>	<b>37,596</b>	<b>7,240</b>	<b>44,836</b>	<b>9,354</b>	<b>7,244</b>	<b>16,598</b>	<b>1,857</b>	<b>174</b>	<b>2,031</b>	<b>48,807</b>	<b>14,658</b>	<b>63,465</b>	<b>62,887</b>	<b>578</b>	<b>0.9%</b>
<b>TOTAL, ALL INSTITUTIONS</b>	<b>94,951</b>	<b>45,569</b>	<b>140,520</b>	<b>14,552</b>	<b>15,792</b>	<b>30,344</b>	<b>3,016</b>	<b>393</b>	<b>3,409</b>	<b>112,519</b>	<b>61,754</b>	<b>174,273</b>	<b>172,740</b>	<b>1,533</b>	<b>0.9%</b>

\*\*Briarwood College changed from a two-year college, effective fall 2004. Briarwood was reported under the "Two-Year Independents" in fall 2004 and moved to "Regional Independents" for this fall 2005. The Fall 2004 sub-totals and yearly changes for those two sub-sectors are adjusted accordingly.

This table includes a correction with a net shift of two fewer students at Trinity College that was reported after this first version of this table was created.

TABLE 2  
Comparative Summary of Fall 2005 Headcount and  
FTE Enrollment in Connecticut Higher  
Education Institutions by Level

	2005 Undergraduate		2005 Graduate & First-Professional		Headcount		Full-Time Equivalent	
	Headcount	FTE	Headcount	FTE	Total 2005	% Change From 2004	Total 2005	% Change From 2004
<b>Public Institutions</b>								
University of Connecticut								
Storrs	16,112	15,494	7,073	4,476	23,185	2.2%	19,970	2.2%
Avery Point	730	526	0	0	730	-5.6%	526	-1.7%
Stamford	1,241	874	0	0	1,241	0.4%	874	1.9%
Tri-Campus	2,442	1,812	0	0	2,442	2.1%	1,812	1.9%
UConn Health Center	0	0	485	482	485	0.0%	482	0.0%
Total	20,525	18,706	7,558	4,958	28,083	1.8%	23,664	2.0%
Connecticut State University								
Central	9,678	7,888	2,637	1,211	12,315	0.0%	9,099	1.1%
Eastern	4,745	4,007	368	171	5,113	-0.8%	4,178	0.9%
Southern	8,309	7,085	3,849	1,973	12,158	-0.2%	9,058	1.4%
Western	5,195	4,315	712	326	5,907	0.4%	4,641	1.8%
Total	27,927	23,295	7,566	3,681	35,493	-0.1%	26,976	1.3%
Community Colleges								
Asnuntuck	1,483	786	0	0	1,483	-1.4%	786	3.6%
Capital	3,573	1,933	0	0	3,573	4.0%	1,933	4.8%
Gateway	5,739	3,083	0	0	5,739	2.6%	3,083	3.8%
Housatonic	4,471	2,469	0	0	4,471	-4.9%	2,469	-5.1%
Manchester	6,135	3,713	0	0	6,135	3.9%	3,713	6.1%
Middlesex	2,286	1,287	0	0	2,286	-2.9%	1,287	-1.9%
Naugatuck	5,667	3,269	0	0	5,667	2.8%	3,269	3.2%
Northwestern	1,569	799	0	0	1,569	3.5%	799	3.5%
Norwalk	6,036	3,316	0	0	6,036	4.2%	3,316	2.9%
Quinebaug Valley	1,714	948	0	0	1,714	-0.4%	948	3.9%
Three Rivers	3,660	2,020	0	0	3,660	-2.8%	2,020	-0.7%
Tunxis	3,894	2,121	0	0	3,894	-1.2%	2,121	0.3%
Total	46,227	25,744	0	0	46,227	1.1%	25,744	2.1%
<b>Total, State Institutions</b>	94,679	67,745	15,124	8,639	109,803	0.9%	76,384	1.8%
U.S. Coast Guard Academy	1,005	1,173	0	0	1,005	1.1%	1,173	1.2%
<b>Total, Public Institutions</b>	95,684	68,918	15,124	8,639	110,808	0.9%	77,557	1.8%

TABLE 2, Continued  
 Comparative Summary of Fall 2005 Headcount and  
 FTE Enrollment in Connecticut Higher  
 Education Institutions by Level

Independent Institutions	2005 Undergraduate		2005 Graduate & First-Professional		Headcount		Full-Time Equivalent	
	Headcount	FTE	Headcount	FTE	Total 2005	% Change From 2004	Total 2005	% Change From 2004
<b>National Independent</b>								
Connecticut College	1,887	2,050	11	9	1,898	-0.4%	2,059	-1.2%
Trinity College	2,287	1,960	183	73	2,470	3.3%	2,033	-0.6%
Wesleyan University	2,764	3,142	441	170	3,205	-0.4%	3,312	-1.1%
Yale University	5,409	4,838	6,074	6,153	11,483	0.4%	10,991	0.6%
<b>Total</b>	<b>12,347</b>	<b>11,990</b>	<b>6,709</b>	<b>6,405</b>	<b>19,056</b>	<b>0.5%</b>	<b>18,395</b>	<b>0.0%</b>
<b>Regional Independent</b>								
Albertus Magnus College	1,782	1,359	448	392	2,230	-5.5%	1,751	-6.4%
Briarwood College	647	493	0	0	647	1.6%	493	0.8%
Fairfield University	4,073	3,785	1,100	532	5,173	2.2%	4,317	4.4%
Graduate Institute, The	0	0	225	169	225	40.6%	169	40.8%
Hartford Seminary	0	0	169	72	169	15.0%	72	30.9%
Holy Apostles College and Seminary	41	17	213	114	254	-4.5%	131	-9.7%
LymeAcademy College of Fine Arts	148	107	5	4	153	-6.7%	111	12.1%
Mitchell College	727	682	0	0	727	3.9%	682	5.9%
Paier College of Art	277	245	0	0	277	-9.5%	245	7.0%
Post University	1,101	870	0	0	1,101	-8.1%	870	2.5%
Quinnipiac University	5,706	5,668	1,587	1,387	7,293	1.0%	7,055	0.4%
Rensselaer at Hartford	0	0	706	265	706	-12.4%	265	-12.3%
Sacred Heart University	4,104	3,582	1,456	806	5,560	-1.7%	4,388	3.2%
St. Basil College	20	20	0	0	20	81.8%	20	53.8%
St. Joseph College	1,159	953	699	342	1,858	3.7%	1,295	6.3%
University of Bridgeport	1,676	1,424	1,950	1,716	3,626	10.8%	3,140	11.2%
University of Hartford	5,592	5,146	1,668	841	7,260	0.2%	5,987	1.4%
University of New Haven	2,788	2,560	1,678	1,047	4,466	7.0%	3,607	10.0%
<b>Total</b>	<b>29,841</b>	<b>26,911</b>	<b>11,904</b>	<b>7,687</b>	<b>41,745</b>	<b>1.4%</b>	<b>34,598</b>	<b>3.4%</b>
<b>Two-Year Independent</b>								
Gibbs College	950	808	0	0	950	-21.3%	808	-32.0%
Goodwin College	1,219	637	0	0	1,219	29.7%	637	15.4%
Int'l College of Hospitality Management	40	221	0	0	40	-57.0%	221	137.6%
Legion of Christ College of Humanities	25	5	0	0	25		5	
St. Vincent's College	414	240	0	0	414	1.7%	240	4.3%
<b>Total</b>	<b>2,648</b>	<b>1,911</b>	<b>0</b>	<b>0</b>	<b>2,648</b>	<b>0.0%</b>	<b>1,911</b>	<b>-7.4%</b>
<b>Total, Independent Institutions</b>	<b>44,836</b>	<b>40,812</b>	<b>18,613</b>	<b>14,092</b>	<b>63,449</b>	<b>1.1%</b>	<b>54,904</b>	<b>1.8%</b>
<b>Total, All Institutions</b>	<b>140,520</b>	<b>109,730</b>	<b>33,737</b>	<b>22,731</b>	<b>174,257</b>	<b>0.9%</b>	<b>132,461</b>	<b>1.8%</b>

TABLE 3

## Total Fall Headcount Enrollment in Connecticut Higher Education Institutions

Public Institutions	1991	1992	1993	1994	1995	1996	1997	1998	1999	2000	2001	2002	2003	2004	2005
University of Connecticut															
University of Connecticut	24,844	24,131	23,182	22,466	22,471	21,805	21,249	21,398	22,241	22,935	23,580	25,373	26,156	27,094	27,598
UConn Health Center	467	457	467	498	502	509	498	501	498	486	471	469	473	485	485
Total	25,311	24,588	23,649	22,964	22,973	22,314	21,747	21,899	22,739	23,421	24,051	25,842	26,629	27,579	28,083
Connecticut State University															
Central	14,120	13,784	12,665	11,959	11,752	11,646	11,625	11,686	11,903	12,252	12,368	12,642	12,131	12,320	12,315
Eastern	4,328	4,495	4,576	4,523	4,590	4,527	4,527	4,724	4,987	5,145	5,337	5,215	5,095	5,156	5,113
Southern	12,941	12,420	12,144	11,652	11,591	11,412	11,395	11,264	11,551	12,127	12,254	12,219	12,143	12,177	12,158
Western	5,886	5,730	5,726	5,583	5,607	5,397	5,421	5,372	5,589	5,806	5,918	6,050	6,079	5,884	5,907
Total	37,275	36,429	35,111	33,717	33,540	32,982	32,968	33,046	34,030	35,330	35,877	36,126	35,448	35,537	35,493
Community Colleges															
Asnuntuck	1,996	2,111	2,181	2,105	2,093	2,063	2,084	1,913	1,719	1,850	1,723	1,724	1,476	1,504	1,483
Capital	2,954	2,927	3,583	3,260	2,834	2,828	2,887	2,911	2,766	3,050	3,129	3,476	3,381	3,436	3,573
Gateway	4,048	4,357	5,163	5,006	4,843	4,537	4,276	3,981	4,151	4,157	4,724	5,328	5,587	5,595	5,739
Housatonic	2,383	2,658	2,691	2,855	2,665	2,653	3,291	3,551	3,829	3,902	4,247	4,515	4,678	4,701	4,471
Manchester	6,134	6,673	6,458	6,258	5,812	5,523	5,495	5,252	5,192	5,135	5,405	5,561	5,717	5,906	6,135
Middlesex	3,289	3,253	3,185	3,010	2,785	2,611	2,237	2,273	2,317	2,309	2,320	2,440	2,400	2,354	2,286
Naugatuck	4,074	4,284	6,008	5,667	5,533	5,238	4,889	4,736	4,864	5,116	5,223	5,315	5,155	5,514	5,667
Northwestern	1,941	2,053	2,096	2,103	2,089	1,885	1,792	1,743	1,698	1,596	1,609	1,633	1,543	1,516	1,569
Norwalk	3,866	4,046	5,113	5,244	5,352	5,357	5,247	4,974	5,220	5,377	5,569	5,717	6,047	5,790	6,036
Quinebaug Valley	1,170	1,178	1,160	1,166	1,120	1,170	1,220	1,214	1,281	1,347	1,501	1,501	1,571	1,721	1,714
Three Rivers	3,138	3,256	4,084	4,137	3,977	3,707	3,573	3,549	3,573	3,574	3,472	3,624	3,622	3,764	3,660
Tunxis	3,501	3,731	3,820	3,772	3,725	3,468	3,335	3,257	3,455	3,412	3,720	4,035	3,983	3,942	3,894
Total	38,494	40,527	45,542	44,583	42,828	41,040	40,326	39,354	40,065	40,825	42,642	44,869	45,160	45,743	46,227
State Technical Colleges															
Greater New Haven	803	850	-	-	-	-	-	-	-	-	-	-	-	-	-
Hartford	825	846	-	-	-	-	-	-	-	-	-	-	-	-	-
Norwalk	1,002	914	-	-	-	-	-	-	-	-	-	-	-	-	-
Thames Valley	1,133	1,019	-	-	-	-	-	-	-	-	-	-	-	-	-
Waterbury	1,531	1,499	-	-	-	-	-	-	-	-	-	-	-	-	-
Total	5,294	5,128	0	0	0	0	0	0	0	0	0	0	0	0	0
<b>Total, State Institutions</b>	<b>106,374</b>	<b>106,672</b>	<b>104,302</b>	<b>101,264</b>	<b>99,341</b>	<b>96,336</b>	<b>95,041</b>	<b>94,299</b>	<b>96,834</b>	<b>99,576</b>	<b>102,570</b>	<b>106,837</b>	<b>107,237</b>	<b>108,859</b>	<b>109,803</b>
U.S. Coast Guard Academy	924	946	930	906	862	821	830	795	838	877	897	952	983	994	1,005
<b>Total, Public Institutions</b>	<b>107,298</b>	<b>107,618</b>	<b>105,232</b>	<b>102,170</b>	<b>100,203</b>	<b>97,157</b>	<b>95,871</b>	<b>95,094</b>	<b>97,672</b>	<b>100,453</b>	<b>103,467</b>	<b>107,789</b>	<b>108,220</b>	<b>109,853</b>	<b>110,808</b>

TABLE 3, Continued  
Total Fall Headcount Enrollment in Connecticut Higher Education Institutions

Independent Institutions	1991	1992	1993	1994	1995	1996	1997	1998	1999	2000	2001	2002	2003	2004	2005
<b>National Independent</b>															
Connecticut College	2,073	2,034	1,947	1,919	1,913	1,918	1,857	1,800	1,820	1,856	1,879	1,912	1,849	1,905	1,898
Trinity College	2,212	2,222	2,171	2,146	2,142	2,179	2,215	2,258	2,371	2,246	2,256	2,323	2,289	2,390	2,470
Wesleyan University	3,304	3,331	3,326	3,270	3,244	3,279	3,335	3,204	3,200	3,158	3,237	3,192	3,221	3,217	3,205
Yale University	11,060	10,950	10,954	10,916	10,893	11,197	11,059	11,032	11,029	11,099	11,136	11,378	11,471	11,441	11,483
<b>Total</b>	<b>18,649</b>	<b>18,537</b>	<b>18,398</b>	<b>18,251</b>	<b>18,192</b>	<b>18,573</b>	<b>18,466</b>	<b>18,294</b>	<b>18,420</b>	<b>18,359</b>	<b>18,508</b>	<b>18,805</b>	<b>18,830</b>	<b>18,953</b>	<b>19,056</b>
<b>Regional Independent</b>															
Albertus Magnus College	642	655	657	730	935	1,237	1,549	1,669	1,964	2,105	2,269	2,325	2,200	2,361	2,230
Briarwood College	-	-	-	-	-	-	-	-	-	-	-	-	-	-	647
Bridgeport Engineering Institute	372	385	327	-	-	-	-	-	-	-	-	-	-	-	-
Fairfield University	4,804	4,873	4,777	4,969	4,980	5,111	5,179	5,208	5,127	5,188	5,154	5,114	5,053	5,060	5,173
Graduate Institute, The	-	-	-	-	-	-	-	-	-	12	-	60	78	160	225
Hartford Seminary	171	177	116	119	136	128	132	130	192	123	147	153	148	147	169
Holy Apostles College and Seminar	227	177	167	152	128	125	114	169	189	199	250	203	241	266	254
LymeAcademy College of Fine Arts	-	-	155	166	147	137	174	177	171	168	168	160	143	164	153
Mitchell College	-	-	-	-	-	-	-	-	590	621	708	724	742	700	727
Paier College of Art	306	292	253	247	250	254	261	260	276	282	284	292	291	306	277
Post University	1,882	1,964	1,843	1,794	1,724	1,550	1,334	1,340	1,422	1,356	1,350	1,378	1,325	1,198	1,101
Quinnipiac University	3,600	4,658	4,665	5,015	5,192	5,434	5,571	5,929	6,047	6,477	6,675	6,951	7,121	7,220	7,293
Rensselaer at Hartford	2,372	2,327	2,068	1,961	1,772	1,903	1,885	2,089	2,048	1,807	1,550	1,441	1,011	806	706
Sacred Heart University	4,539	5,185	5,118	5,453	5,418	5,446	5,458	5,605	5,528	5,684	5,953	6,028	5,730	5,657	5,560
St. Basil College	-	-	-	-	-	48	62	73	58	28	20	15	13	11	20
St. Joseph College	1,917	2,007	2,022	1,986	1,916	1,925	1,938	1,824	1,740	1,823	1,939	1,778	1,836	1,792	1,858
St. Thomas Seminary	-	-	-	-	-	-	-	-	-	7	-	-	-	-	-
University of Bridgeport	3,904	1,383	1,605	1,939	1,915	2,147	2,427	2,503	2,686	2,973	3,162	3,173	3,165	3,274	3,626
University of Hartford	7,836	7,837	7,262	7,241	7,022	7,068	7,089	6,892	6,882	6,895	6,844	6,998	7,245	7,246	7,260
University of New Haven	5,899	5,916	5,912	5,877	5,822	5,113	4,976	4,953	4,463	4,349	4,229	4,329	4,386	4,173	4,466
<b>Total</b>	<b>38,471</b>	<b>37,836</b>	<b>36,947</b>	<b>37,649</b>	<b>37,357</b>	<b>37,626</b>	<b>38,149</b>	<b>38,821</b>	<b>39,383</b>	<b>40,097</b>	<b>40,702</b>	<b>41,122</b>	<b>40,728</b>	<b>40,541</b>	<b>41,745</b>
<b>Two-Year Independent</b>															
Briarwood College	384	448	505	508	541	573	575	623	627	518	511	566	588	637	-
Gibbs College	65	57	54	30	65	30	66	462	927	554	535	366	1,154	1,207	950
Goodwin College	-	-	-	-	-	-	-	-	499	418	494	676	667	940	1,219
Int'l College of Hospitality Mgmt	-	-	54	110	132	140	106	82	95	45	110	75	45	93	40
Legion of Christ College of Humaniti	-	-	-	-	-	-	-	-	-	-	-	-	-	-	25
Mitchell College	986	897	771	645	637	669	619	640	-	-	-	-	-	-	-
Mount Sacred Heart College	13	11	9	8	7	1	-	-	-	-	-	-	-	-	-
St. Vincent's College	183	199	197	189	212	217	177	213	210	265	317	340	365	407	414
Wilcox College of Nursing	109	192	200	204	172	97	30	-	-	-	-	-	-	-	-
<b>Total</b>	<b>1,740</b>	<b>1,804</b>	<b>1,790</b>	<b>1,694</b>	<b>1,766</b>	<b>1,727</b>	<b>1,573</b>	<b>2,020</b>	<b>2,358</b>	<b>1,800</b>	<b>1,967</b>	<b>2,023</b>	<b>2,819</b>	<b>3,284</b>	<b>2,648</b>
<b>Total, Independent Institutions</b>	<b>58,860</b>	<b>58,177</b>	<b>57,135</b>	<b>57,594</b>	<b>57,315</b>	<b>57,926</b>	<b>58,188</b>	<b>59,135</b>	<b>60,161</b>	<b>60,256</b>	<b>61,177</b>	<b>61,950</b>	<b>62,377</b>	<b>62,778</b>	<b>63,449</b>
<b>Total, All Institutions</b>	<b>166,158</b>	<b>165,795</b>	<b>162,367</b>	<b>159,764</b>	<b>157,518</b>	<b>155,083</b>	<b>154,059</b>	<b>154,229</b>	<b>157,833</b>	<b>160,709</b>	<b>164,644</b>	<b>169,739</b>	<b>170,597</b>	<b>172,631</b>	<b>174,257</b>

TABLE 4  
Total FTE Enrollment in Connecticut Higher Education Institutions

Public Institutions	1991	1992	1993	1994	1995	1996	1997	1998	1999	2000	2001	2002	2003	2004	2005
<b>University of Connecticut</b>															
Storrs	16,331	15,889	15,496	14,095	15,190	15,074	14,420	14,586	15,109	15,978	16,863	17,872	18,888	19,547	19,970
Avery Point	454	430	423	411	418	390	384	399	419	420	448	497	534	535	526
Hartford	814	793	744	710	680	657	597	629	-	-	-	-	-	-	-
Stamford	620	575	544	516	514	499	491	586	609	656	727	775	767	858	874
Torrington	225	230	205	179	196	206	174	184	-	-	-	-	-	-	-
Tri-Campus	-	-	-	-	-	-	-	-	1,266	1,284	1,323	1,433	1,568	1,778	1,812
Waterbury	476	473	398	358	379	320	308	315	-	-	-	-	-	-	-
UConn Health Center	467	456	463	498	502	509	498	500	496	483	469	467	469	482	482
<b>Total</b>	<b>19,387</b>	<b>18,846</b>	<b>18,273</b>	<b>16,767</b>	<b>17,879</b>	<b>17,655</b>	<b>16,872</b>	<b>17,199</b>	<b>17,899</b>	<b>18,821</b>	<b>19,830</b>	<b>21,044</b>	<b>22,226</b>	<b>23,200</b>	<b>23,664</b>
<b>Connecticut State University</b>															
Central	8,837	8,740	8,058	7,700	7,418	7,369	7,445	7,708	7,866	8,111	8,432	8,836	8,585	9,001	9,099
Eastern	3,073	3,138	3,203	3,188	3,258	3,328	3,328	3,557	3,820	3,935	4,045	4,081	4,052	4,140	4,178
Southern	8,742	8,358	8,097	7,855	7,689	7,677	7,756	7,677	7,900	8,335	8,535	8,672	8,759	8,936	9,058
Western	3,714	3,704	3,756	3,681	3,656	3,573	3,626	3,698	3,842	4,034	4,254	4,391	4,552	4,560	4,641
<b>Total</b>	<b>24,366</b>	<b>23,940</b>	<b>23,114</b>	<b>22,424</b>	<b>22,021</b>	<b>21,947</b>	<b>22,155</b>	<b>22,640</b>	<b>23,428</b>	<b>24,415</b>	<b>25,266</b>	<b>25,980</b>	<b>25,948</b>	<b>26,637</b>	<b>26,976</b>
<b>Community Colleges</b>															
Asnuntuck	775	815	840	856	817	797	806	744	750	785	786	800	734	759	786
Capital	1,304	1,322	1,732	1,582	1,371	1,369	1,368	1,354	1,319	1,468	1,533	1,757	1,794	1,845	1,933
Gateway	1,881	2,012	2,572	2,452	2,334	2,161	2,002	1,906	1,979	2,029	2,343	2,748	2,909	2,971	3,083
Housatonic	1,097	1,225	1,247	1,296	1,233	1,212	1,543	1,676	1,809	1,884	2,123	2,308	2,487	2,601	2,469
Manchester	3,188	3,523	3,420	3,236	2,945	2,790	2,766	2,684	2,698	2,729	2,914	3,127	3,250	3,499	3,713
Middlesex	1,582	1,564	1,535	1,443	1,340	1,242	1,070	1,049	1,104	1,108	1,119	1,235	1,245	1,312	1,287
Naugatuck	2,265	2,368	3,246	3,105	2,926	2,728	2,521	2,495	2,599	2,748	2,822	2,939	2,904	3,169	3,269
Northwestern	910	941	903	903	853	849	800	767	738	702	723	782	775	772	799
Norwalk	1,739	1,867	2,428	2,512	2,589	2,580	2,545	2,444	2,619	2,759	2,921	3,093	3,278	3,224	3,316
Quinebaug Valley	541	572	584	575	574	581	597	598	666	694	763	793	822	912	948
Three Rivers	1,460	1,525	2,006	2,000	1,967	1,818	1,728	1,774	1,779	1,761	1,742	1,894	1,892	2,034	2,020
Tunxis	1,597	1,672	1,666	1,758	1,746	1,618	1,533	1,503	1,594	1,591	1,783	2,011	2,068	2,114	2,121
<b>Total</b>	<b>18,339</b>	<b>19,406</b>	<b>22,179</b>	<b>21,718</b>	<b>20,695</b>	<b>19,745</b>	<b>19,279</b>	<b>18,994</b>	<b>19,654</b>	<b>20,258</b>	<b>21,572</b>	<b>23,487</b>	<b>24,158</b>	<b>25,212</b>	<b>25,744</b>
<b>State Technical Colleges</b>															
Greater New Haven	571	575	-	-	-	-	-	-	-	-	-	-	-	-	-
Hartford	521	496	-	-	-	-	-	-	-	-	-	-	-	-	-
Norwalk	575	493	-	-	-	-	-	-	-	-	-	-	-	-	-
Thames Valley	662	628	-	-	-	-	-	-	-	-	-	-	-	-	-
Waterbury	819	804	-	-	-	-	-	-	-	-	-	-	-	-	-
<b>Total</b>	<b>3,148</b>	<b>2,996</b>	<b>0</b>	<b>0</b>	<b>0</b>	<b>0</b>	<b>0</b>	<b>0</b>	<b>0</b>	<b>0</b>	<b>0</b>	<b>0</b>	<b>0</b>	<b>0</b>	<b>0</b>
<b>Total, State Institutions</b>	<b>65,240</b>	<b>65,188</b>	<b>63,566</b>	<b>60,909</b>	<b>60,595</b>	<b>59,347</b>	<b>58,306</b>	<b>58,833</b>	<b>60,981</b>	<b>63,494</b>	<b>66,668</b>	<b>70,511</b>	<b>72,332</b>	<b>75,049</b>	<b>76,384</b>
U.S. Coast Guard Academy	1,078	1,104	1,085	1,057	1,006	958	968	928	978	1,023	1,047	1,111	1,147	1,159	1,173
<b>Total, Public Institutions</b>	<b>66,318</b>	<b>66,292</b>	<b>64,651</b>	<b>61,966</b>	<b>61,601</b>	<b>60,305</b>	<b>59,274</b>	<b>59,761</b>	<b>61,959</b>	<b>64,517</b>	<b>67,715</b>	<b>71,622</b>	<b>73,479</b>	<b>76,208</b>	<b>77,557</b>

TABLE 4, Continued  
Total FTE Enrollment in Connecticut Higher Education Institutions

Independent Institutions	1991	1992	1993	1994	1995	1996	1997	1998	1999	2000	2001	2002	2003	2004	2005
<b>National Independent</b>															
Connecticut College	2,002	1,952	1,867	1,877	1,876	1,953	1,745	1,856	1,924	1,885	2,019	2,052	1,996	2,084	2,059
Trinity College	1,822	1,760	1,734	1,782	1,777	1,808	2,001	2,051	1,911	1,661	2,092	1,921	1,921	2,045	2,033
Wesleyan University	3,025	3,094	-	3,074	2,660	3,015	3,093	2,926	3,013	2,892	2,953	3,245	3,520	3,350	3,312
Yale University	10,506	10,445	10,430	10,410	10,389	10,610	10,494	10,468	10,523	10,560	10,705	10,906	10,953	10,923	10,991
<b>Total</b>	<b>17,355</b>	<b>17,251</b>	<b>14,031</b>	<b>17,143</b>	<b>16,702</b>	<b>17,386</b>	<b>17,333</b>	<b>17,301</b>	<b>17,371</b>	<b>16,998</b>	<b>17,769</b>	<b>18,124</b>	<b>18,390</b>	<b>18,402</b>	<b>18,395</b>
<b>Regional Independent</b>															
Albertus Magnus College	489	464	470	516	694	957	1,248	1,338	1,583	1,705	1,719	1,786	1,723	1,871	1,751
Briarwood College	-	-	-	-	-	-	-	-	-	-	-	-	-	-	493
Bridgeport Engineering Institute	142	150	122	-	-	-	-	-	-	-	-	-	-	-	-
Fairfield University	3,617	3,708	3,627	3,704	3,798	3,941	3,984	4,040	4,069	4,239	4,196	4,184	4,232	4,135	4,317
Graduate Institute, The	-	-	-	-	-	-	-	-	-	3	-	60	2	120	169
Hartford Seminary	47	44	43	45	51	42	51	49	76	-	54	55	56	55	72
Holy Apostles College and Seminary	173	133	158	138	103	107	95	100	124	89	99	114	133	145	131
LymeAcademy College of Fine Arts	-	-	49	61	65	69	87	88	83	86	95	95	92	99	111
Mitchell College	-	-	-	-	-	-	-	-	560	571	640	648	678	644	682
Paier College of Art	234	220	193	183	183	174	187	187	198	205	209	179	221	229	245
Post University	992	1,002	928	902	904	814	754	815	865	870	834	858	915	849	870
Quinnipiac University	2,962	3,989	4,072	4,529	4,774	5,019	5,174	5,494	5,671	6,238	6,396	6,705	6,893	7,025	7,055
Rensselaer at Hartford	777	758	664	660	562	649	618	768	699	656	572	637	346	302	265
Sacred Heart University	2,510	2,882	2,949	3,236	3,368	3,467	3,581	3,772	3,795	4,104	4,290	4,377	4,410	4,250	4,388
St. Basil College	-	-	-	-	-	60	73	140	69	-	20	21	16	13	20
St. Joseph College	1,064	1,085	1,063	1,095	1,090	1,137	1,186	1,138	1,082	1,110	1,119	1,113	1,229	1,218	1,295
University of Bridgeport	3,090	972	1,260	1,605	1,642	1,878	2,172	2,285	2,441	2,538	2,641	2,632	2,747	2,824	3,140
University of Hartford	5,765	5,361	5,319	5,495	5,409	5,496	5,495	5,314	5,478	5,435	5,499	5,665	5,891	5,903	5,987
University of New Haven	2,866	3,086	3,030	3,285	3,287	3,065	2,999	3,139	2,873	2,899	2,952	3,405	3,324	3,280	3,607
<b>Total</b>	<b>24,728</b>	<b>23,854</b>	<b>23,947</b>	<b>25,454</b>	<b>25,930</b>	<b>26,875</b>	<b>27,704</b>	<b>28,667</b>	<b>29,666</b>	<b>30,748</b>	<b>31,335</b>	<b>32,534</b>	<b>32,908</b>	<b>32,962</b>	<b>34,598</b>
<b>Two-Year Independent</b>															
Briarwood College	312	466	367	347	431	442	440	542	463	385	387	434	453	489	-
Gibbs College	394	58	55	6	65	30	68	481	726	554	521	326	582	1,189	808
Goodwin College	-	-	-	-	-	-	-	-	499	403	480	624	468	552	637
Int'l College of Hospitality Mgmt	-	-	54	70	135	146	111	87	92	54	109	96	54	93	221
Legion of Christ College of Humanitie	-	-	-	-	-	-	-	-	-	-	-	-	-	-	5
Mitchell College	712	622	586	509	601	645	611	623	-	-	-	-	-	-	-
Mount Sacred Heart College	6	1	2	3	1	-	-	-	-	-	-	-	-	-	-
St. Vincent's College	123	122	124	125	131	134	108	126	113	152	160	186	195	230	240
Wilcox College of Nursing	58	135	140	103	98	54	18	-	-	-	-	-	-	-	-
<b>Total</b>	<b>1,605</b>	<b>1,404</b>	<b>1,328</b>	<b>1,163</b>	<b>1,462</b>	<b>1,451</b>	<b>1,356</b>	<b>1,859</b>	<b>1,893</b>	<b>1,548</b>	<b>1,657</b>	<b>1,666</b>	<b>1,752</b>	<b>2,553</b>	<b>1,911</b>
<b>Total, Independent Institutions</b>	<b>43,688</b>	<b>42,509</b>	<b>39,306</b>	<b>43,760</b>	<b>44,094</b>	<b>45,712</b>	<b>46,393</b>	<b>47,827</b>	<b>48,930</b>	<b>49,294</b>	<b>50,761</b>	<b>52,324</b>	<b>53,050</b>	<b>53,917</b>	<b>54,904</b>
<b>Total, All Institutions</b>	<b>110,006</b>	<b>108,801</b>	<b>103,957</b>	<b>105,726</b>	<b>105,695</b>	<b>106,017</b>	<b>105,667</b>	<b>107,588</b>	<b>110,889</b>	<b>113,811</b>	<b>118,476</b>	<b>123,946</b>	<b>126,529</b>	<b>130,125</b>	<b>132,461</b>





TABLE 6  
Enrollment of Minority Students in Connecticut Institutions of Higher Education  
Fall 2005

Public Institutions	Black		Asian or Pacific Islander	Native American	Total Minority	R/E Unknown	Non- Resident Alien	White Non- Hispanic	Total Non- Minority	Total Headcount
	Non- Hispanic	Hispanic								
<b>University of Connecticut</b>										
Storrs	1,151	1,010	1,426	76	3,663	2,390	1,382	15,750	19,522	23,185
Avery Point	25	33	45	5	108	116	0	506	622	730
Stamford	155	151	99	2	407	148	49	637	834	1,241
Tri-Campus	203	209	187	10	609	266	12	1,555	1,833	2,442
UConn Health Center	55	20	54	2	131	21	19	314	354	485
Total	1,589	1,423	1,811	95	4,918	2,941	1,462	18,762	23,165	28,083
<b>Connecticut State University</b>										
Central	897	656	321	59	1,933	1,051	210	9,121	10,382	12,315
Eastern	351	238	76	30	695	151	41	4,226	4,418	5,113
Southern	1,278	684	269	32	2,263	1,074	153	8,668	9,895	12,158
Western	307	324	205	11	847	389	48	4,623	5,060	5,907
Total	2,833	1,902	871	132	5,738	2,665	452	26,638	29,755	35,493
<b>Community Colleges</b>										
Asnuntuck	77	44	25	5	151	19	2	1,311	1,332	1,483
Capital	1,371	904	142	9	2,426	203	24	920	1,147	3,573
Gateway	1,408	721	197	14	2,340	341	58	3,000	3,399	5,739
Housatonic	1,301	939	109	9	2,358	252	37	1,824	2,113	4,471
Manchester	717	618	230	15	1,580	307	44	4,204	4,555	6,135
Middlesex	170	189	73	2	434	100	8	1,744	1,852	2,286
Naugatuck	457	643	144	20	1,264	426	24	3,953	4,403	5,667
Northwestern	26	51	32	4	113	77	1	1,378	1,456	1,569
Norwalk	1,098	1,080	284	12	2,474	392	265	2,905	3,562	6,036
Quinebaug Valley	33	161	20	14	228	74	2	1,410	1,486	1,714
Three Rivers	246	267	128	46	687	236	20	2,717	2,973	3,660
Tunxis	221	368	112	15	716	125	34	3,019	3,178	3,894
Total	7,125	5,985	1,496	165	14,771	2,552	519	28,385	31,456	46,227
<b>Total, State Institutions</b>	11,547	9,310	4,178	392	25,427	8,158	2,433	73,785	84,376	109,803
U.S. Coast Guard Academy	25	41	49	6	121	0	13	871	884	1,005
<b>Total, Public Institutions</b>	11,572	9,351	4,227	398	25,548	8,158	2,446	74,656	85,260	110,808

TABLE 6, Continued  
 Enrollment of Minority Students in Connecticut Institutions of Higher Education  
**Fall 2005**

Independent Institutions	Black		Asian or	Native American	Total Minority	R/E Unknown	Non-	White	Total Non-Minority	Total Headcount
	Non-Hispanic	Hispanic	Pacific Islander				Resident Alien	Non-Hispanic		
<b>National Independent</b>										
Connecticut College	75	92	90	3	260	179	74	1,385	1,638	1,898
Trinity College	127	119	135	2	383	554	49	1,484	2,087	2,470
Wesleyan University	204	200	278	10	692	408	258	1,847	2,513	3,205
Yale University	723	593	1,288	63	2,667	1,238	1,759	5,819	8,816	11,483
<b>Total</b>	1,129	1,004	1,791	78	4,002	2,379	2,140	10,535	15,054	19,056
<b>Regional Independent</b>										
Albertus Magnus College	602	220	22	7	851	94	7	1,278	1,379	2,230
Briarwood College	143	70	5	1	219	23	8	397	428	647
Fairfield University	125	244	153	9	531	288	114	4,240	4,642	5,173
Graduate Institute, The	10	7	3	2	22	4	0	199	203	225
Hartford Seminary	32	4	8	0	44	0	13	112	125	169
Holy Apostles College and Seminary	1	19	4	0	24	57	9	164	230	254
LymeAcademy College of Fine Arts	0	5	0	0	5	1	0	147	148	153
Mitchell College	77	52	2	36	167	65	7	488	560	727
Paier College of Art	5	4	1	0	10	5	1	261	267	277
Post University	236	111	29	3	379	10	32	680	722	1,101
Quinnipiac University	192	296	194	14	696	737	123	5,737	6,597	7,293
Rensselaer at Hartford	30	40	73	2	145	99	15	447	561	706
Sacred Heart University	287	282	92	9	670	0	54	4,836	4,890	5,560
St. Basil College	0	0	0	0	0	0	18	2	20	20
St. Joseph College	187	109	35	3	334	243	2	1,279	1,524	1,858
University of Bridgeport	688	304	138	9	1,139	121	844	1,522	2,487	3,626
University of Hartford	631	312	201	18	1,162	1,109	301	4,688	6,098	7,260
University of New Haven	339	250	90	24	703	569	298	2,896	3,763	4,466
<b>Total</b>	3,585	2,329	1,050	137	7,101	3,425	1,846	29,373	34,644	41,745
<b>Two-Year Independent</b>										
Gibbs College	244	225	19	2	490	90	2	368	460	950
Goodwin College	367	172	15	5	559	86	0	574	660	1,219
Int'l College of Hospitality Management	1	3	0	0	4	0	18	18	36	40
Legion of Christ College of Humanities	0	0	1	0	1	0	5	19	24	25
St. Vincent's College	67	35	4	0	106	0	13	295	308	414
<b>Total</b>	679	435	39	7	1,160	176	38	1,274	1,488	2,648
<b>Total, Independent Institution</b>	5,393	3,768	2,880	222	12,263	5,980	4,024	41,182	51,186	63,449
<b>Total, All Institutions</b>	16,965	13,119	7,107	620	37,811	14,138	6,470	115,838	136,446	174,257

TABLE 6-A  
Enrollment of Minority Undergraduate Students in Connecticut Institutions of Higher Education  
Fall 2005

Public Institutions	Black Non- Hispanic	Hispanic	Asian or Pacific Islander	Native American	Total Minority	R/E Unknown	Non- Resident Alien	White Non- Hispanic	Total Non- Minority	Total Headcount
<b>University of Connecticut</b>										
Storrs	836	720	1,127	58	2,741	1,587	161	11,623	13,371	16,112
Avery Point	25	33	45	5	108	116	0	506	622	730
Stamford	155	151	99	2	407	148	49	637	834	1,241
Tri-Campus	203	209	187	10	609	266	12	1,555	1,833	2,442
Total	1,219	1,113	1,458	75	3,865	2,117	222	14,321	16,660	20,525
<b>Connecticut State University</b>										
Central	774	553	255	52	1,634	725	140	7,179	8,044	9,678
Eastern	343	229	73	30	675	141	38	3,891	4,070	4,745
Southern	1,035	545	186	30	1,796	606	94	5,813	6,513	8,309
Western	292	308	189	7	796	330	43	4,026	4,399	5,195
Total	2,444	1,635	703	119	4,901	1,802	315	20,909	23,026	27,927
<b>Community Colleges</b>										
Asnuntuck	77	44	25	5	151	19	2	1,311	1,332	1,483
Capital	1,371	904	142	9	2,426	203	24	920	1,147	3,573
Gateway	1,408	721	197	14	2,340	341	58	3,000	3,399	5,739
Housatonic	1,301	939	109	9	2,358	252	37	1,824	2,113	4,471
Manchester	717	618	230	15	1,580	307	44	4,204	4,555	6,135
Middlesex	170	189	73	2	434	100	8	1,744	1,852	2,286
Naugatuck	457	643	144	20	1,264	426	24	3,953	4,403	5,667
Northwestern	26	51	32	4	113	77	1	1,378	1,456	1,569
Norwalk	1,098	1,080	284	12	2,474	392	265	2,905	3,562	6,036
Quinebaug Valley	33	161	20	14	228	74	2	1,410	1,486	1,714
Three Rivers	246	267	128	46	687	236	20	2,717	2,973	3,660
Tunxis	221	368	112	15	716	125	34	3,019	3,178	3,894
Total	7,125	5,985	1,496	165	14,771	2,552	519	28,385	31,456	46,227
<b>Total, State Institutions</b>	10,788	8,733	3,657	359	23,537	6,471	1,056	63,615	71,142	94,679
U.S. Coast Guard Academy	25	41	49	6	121	0	13	871	884	1,005
<b>Total, Public Institutions</b>	10,813	8,774	3,706	365	23,658	6,471	1,069	64,486	72,026	95,684

TABLE 6-A, Continued  
Enrollment of Minority Undergraduate Students in Connecticut Institutions of Higher Education  
Fall 2005

Independent Institutions	Black Non- Hispanic	Hispanic	Asian or Pacific Islander	Native American	Total Minority	R/E Unknown	Non- Resident Alien	White Non- Hispanic	Total Non- Minority	Total Headcount
<b>National Independent</b>										
Connecticut College	75	92	90	3	260	179	74	1,374	1,627	1,887
Trinity College	120	109	131	2	362	516	48	1,361	1,925	2,287
Wesleyan University	198	195	271	10	674	245	178	1,667	2,090	2,764
Yale University	435	384	733	47	1,599	621	445	2,744	3,810	5,409
<b>Total</b>	<b>828</b>	<b>780</b>	<b>1,225</b>	<b>62</b>	<b>2,895</b>	<b>1,561</b>	<b>745</b>	<b>7,146</b>	<b>9,452</b>	<b>12,347</b>
<b>Regional Independent</b>										
Albertus Magnus College	490	191	17	5	703	72	6	1,001	1,079	1,782
Briarwood College	143	70	5	1	219	23	8	397	428	647
Fairfield University	91	201	122	7	421	112	49	3,491	3,652	4,073
Holy Apostles College and Seminary	0	3	2	0	5	0	2	34	36	41
LymeAcademy College of Fine Arts	0	5	0	0	5	1	0	142	143	148
Mitchell College	77	52	2	36	167	65	7	488	560	727
Paier College of Art	5	4	1	0	10	5	1	261	267	277
Post University	236	111	29	3	379	10	32	680	722	1,101
Quinnipiac University	146	256	136	9	547	598	66	4,495	5,159	5,706
Sacred Heart University	236	251	58	9	554	0	38	3,512	3,550	4,104
St. Basil College	0	0	0	0	0	0	18	2	20	20
St. Joseph College	160	95	22	2	279	111	1	768	880	1,159
University of Bridgeport	548	239	73	4	864	78	221	513	812	1,676
University of Hartford	559	261	146	15	981	797	146	3,668	4,611	5,592
University of New Haven	223	179	55	14	471	324	60	1,933	2,317	2,788
<b>Total</b>	<b>2,914</b>	<b>1,918</b>	<b>668</b>	<b>105</b>	<b>5,605</b>	<b>2,196</b>	<b>655</b>	<b>21,385</b>	<b>24,236</b>	<b>29,841</b>
<b>Two-Year Independent</b>										
Gibbs College	244	225	19	2	490	90	2	368	460	950
Goodwin College	367	172	15	5	559	86	0	574	660	1,219
Int'l College of Hospitality Management	1	3	0	0	4	0	18	18	36	40
Legion of Christ College of Humanities	0	0	1	0	1	0	5	19	24	25
St. Vincent's College	67	35	4	0	106	0	13	295	308	414
<b>Total</b>	<b>679</b>	<b>435</b>	<b>39</b>	<b>7</b>	<b>1,160</b>	<b>176</b>	<b>38</b>	<b>1,274</b>	<b>1,488</b>	<b>2,648</b>
<b>Total, Independent Institution</b>	<b>4,421</b>	<b>3,133</b>	<b>1,932</b>	<b>174</b>	<b>9,660</b>	<b>3,933</b>	<b>1,438</b>	<b>29,805</b>	<b>35,176</b>	<b>44,836</b>
<b>Total, All Institutions</b>	<b>15,234</b>	<b>11,907</b>	<b>5,638</b>	<b>539</b>	<b>33,318</b>	<b>10,404</b>	<b>2,507</b>	<b>94,291</b>	<b>107,202</b>	<b>140,520</b>

TABLE 7  
Fall 2004 and 2005  
First-Time, Full-Time Freshmen Enrollment in Connecticut Colleges and Universities

Public Institutions	2004	2005	One-Year Change	
			Number	%
University of Connecticut				
Avery Point	177	166	-11	-6.2%
Stamford	191	168	-23	-12.0%
Storrs	3,235	3,243	8	0.2%
Tri-Campus	609	602	-7	-1.1%
<b>Total University of Connecticut</b>	<b>4,212</b>	<b>4,179</b>	<b>-33</b>	<b>-0.8%</b>
Connecticut State University				
Central	1,280	1,334	54	4.2%
Eastern	841	869	28	3.3%
Southern	1,388	1,313	-75	-5.4%
Western	765	773	8	1.0%
<b>Total Connecticut State University</b>	<b>4,274</b>	<b>4,289</b>	<b>15</b>	<b>0.4%</b>
Community Colleges				
Asnuntuck	143	145	2	1.4%
Capital	276	341	65	23.6%
Gateway	565	606	41	7.3%
Housatonic	544	487	-57	-10.5%
Manchester	833	883	50	6.0%
Middlesex	295	305	10	3.4%
Naugatuck	799	814	15	1.9%
Northwestern	172	196	24	14.0%
Norwalk	493	456	-37	-7.5%
Quinebaug Valley	202	213	11	5.4%
Three Rivers	444	463	19	4.3%
Tunxis	424	444	20	4.7%
<b>Total Community Colleges</b>	<b>5,190</b>	<b>5,353</b>	<b>163</b>	<b>3.1%</b>
<b>Total, State Institutions</b>	<b>13,676</b>	<b>13,821</b>	<b>145</b>	<b>1.1%</b>
U.S. Coast Guard Academy	285	272	-13	-4.6%
<b>Total, Public Institutions</b>	<b>13,961</b>	<b>14,093</b>	<b>132</b>	<b>0.9%</b>

TABLE 7, Continued

Fall 2004 and 2005

First-Time, Full-Time Freshmen Enrollment in Connecticut Colleges and Universities

Independent Institutions	2004	2005	One-Year Change	
			Number	%
<b>National Independent</b>				
Connecticut College	498	492	-6	-1.2%
Trinity College	569	573	4	0.7%
Wesleyan University	728	705	-23	-3.2%
Yale University	1,307	1,321	14	1.1%
<b>Total National Independent</b>	<b>3,102</b>	<b>3,091</b>	<b>-11</b>	<b>-0.4%</b>
<b>Regional Independent</b>				
Albertus Magnus College	192	186	-6	-3.1%
Briarwood College	0	141	141	
Fairfield University	856	940	84	9.8%
Holy Apostles College and Seminary	1	0		
LymeAcademy College of Fine Arts	15	12	-3	-20.0%
Mitchell College	226	239	13	5.8%
Paier College of Art	43	43	0	0.0%
Post University	202	172	-30	-14.9%
Quinnipiac University	1,335	1,358	23	1.7%
Sacred Heart University	877	886	9	1.0%
St. Basil College	2	8	6	300.0%
St. Joseph College	189	206	17	9.0%
University of Bridgeport	250	359	109	43.6%
University of Hartford	1,318	1,455	137	10.4%
University of New Haven	571	653	82	14.4%
<b>Total Regional Independent</b>	<b>6,077</b>	<b>6,658</b>	<b>581</b>	<b>9.6%</b>
<b>Two-Year Independent</b>				
Briarwood College	131	0		
Gibbs College	409	200	-209	-51.1%
Goodwin College	77	51	-26	-33.8%
Int'l College of Hospitality Management	86	17	-69	-80.2%
Legion of Christ College of Humanities	0	25	25	
St. Vincent's College	12	6	-6	-50.0%
<b>Total Two-Year Independent</b>	<b>715</b>	<b>299</b>	<b>-416</b>	<b>-58.2%</b>
<b>Total, Independent Institutions</b>	<b>9,894</b>	<b>10,048</b>	<b>154</b>	<b>1.6%</b>
<b>Total, All Institutions</b>	<b>23,855</b>	<b>24,141</b>	<b>286</b>	<b>1.2%</b>

TABLE 8

Fall 2005

## First-Time Freshmen Enrollment in Connecticut Colleges and Universities

Public Institutions	Full-time	Part-Time	Total	Percent of total who are	
				Full-Time	Part-Time
University of Connecticut					
Avery Point	166	3	169	98.2%	1.8%
Stamford	168	17	185	90.8%	9.2%
Storrs	3,243	17	3,260	99.5%	0.5%
Tri-Campus	602	30	632	95.3%	4.7%
<b>Total University of Connecticut</b>	<b>4,179</b>	<b>67</b>	<b>4,246</b>	<b>98.4%</b>	<b>1.6%</b>
Connecticut State University					
Central	1,334	22	1,356	98.4%	1.6%
Eastern	869	56	925	93.9%	6.1%
Southern	1,313	27	1,340	98.0%	2.0%
Western	773	14	787	98.2%	1.8%
<b>Total Connecticut State University</b>	<b>4,289</b>	<b>119</b>	<b>4,408</b>	<b>97.3%</b>	<b>2.7%</b>
Community Colleges					
Asnuntuck	145	54	199	72.9%	27.1%
Capital	341	352	693	49.2%	50.8%
Gateway	606	414	1,020	59.4%	40.6%
Housatonic	487	391	878	55.5%	44.5%
Manchester	883	372	1,255	70.4%	29.6%
Middlesex	305	127	432	70.6%	29.4%
Naugatuck	814	355	1,169	69.6%	30.4%
Northwestern	196	100	296	66.2%	33.8%
Norwalk	456	257	713	64.0%	36.0%
Quinebaug Valley	213	125	338	63.0%	37.0%
Three Rivers	463	364	827	56.0%	44.0%
Tunxis	444	160	604	73.5%	26.5%
<b>Total Community Colleges</b>	<b>5,353</b>	<b>3,071</b>	<b>8,424</b>	<b>63.5%</b>	<b>36.5%</b>
<b>Total, State Institutions</b>	<b>13,821</b>	<b>3,257</b>	<b>17,078</b>	<b>80.9%</b>	<b>19.1%</b>
U.S. Coast Guard Academy	272	0	272	100.0%	0.0%
<b>Total, Public Institutions</b>	<b>14,093</b>	<b>3,257</b>	<b>17,350</b>	<b>81.2%</b>	<b>18.8%</b>

TABLE 8, Continued

Fall 2005

## First-Time Freshmen Enrollment in Connecticut Colleges and Universities

Independent Institutions	Full-time	Part-Time	Total	Percent of total who are	
				Full-Time	Part-Time
<b>National Independent</b>					
Connecticut College	492	0	492	100.0%	0.0%
Trinity College	573	0	573	100.0%	0.0%
Wesleyan University	705	0	705	100.0%	0.0%
Yale University	1,321	0	1,321	100.0%	0.0%
<b>Total National Independent</b>	<b>3,091</b>	<b>0</b>	<b>3,091</b>	<b>100.0%</b>	<b>0.0%</b>
<b>Regional Independent</b>					
Albertus Magnus College	186	7	193	96.4%	3.6%
Briarwood College	141	24	165	85.5%	14.5%
Fairfield University	940	0	940	100.0%	0.0%
Holy Apostles College and Seminary	0	1	1	0.0%	100.0%
LymeAcademy College of Fine Arts	12	0	12	100.0%	0.0%
Mitchell College	239	6	245	97.6%	2.4%
Paier College of Art	43	6	49	87.8%	12.2%
Post University	172	33	205	83.9%	16.1%
Quinnipiac University	1,358	3	1,361	99.8%	0.2%
Sacred Heart University	886	0	886	100.0%	0.0%
St. Basil College	8	0	8	100.0%	0.0%
St. Joseph College	206	47	253	81.4%	18.6%
University of Bridgeport	359	6	365	98.4%	1.6%
University of Hartford	1,455	14	1,469	99.0%	1.0%
University of New Haven	653	11	664	98.3%	1.7%
<b>Total Regional Independent</b>	<b>6,658</b>	<b>158</b>	<b>6,816</b>	<b>97.7%</b>	<b>2.3%</b>
<b>Two-Year Independent</b>					
Gibbs College	200	135	335	59.7%	40.3%
Goodwin College	51	145	196	26.0%	74.0%
Int'l College of Hospitality Management	17	0	17	100.0%	0.0%
Legion of Christ College of Humanities	25	0	25	100.0%	0.0%
St. Vincent's College	6	6	12	50.0%	50.0%
<b>Total Two-Year Independent</b>	<b>299</b>	<b>286</b>	<b>585</b>	<b>51.1%</b>	<b>48.9%</b>
<b>Total, Independent Institutions</b>	<b>10,048</b>	<b>444</b>	<b>10,492</b>	<b>95.8%</b>	<b>4.2%</b>
<b>Total, All Institutions</b>	<b>24,141</b>	<b>3,701</b>	<b>27,842</b>	<b>86.7%</b>	<b>13.3%</b>

TABLE 9  
Connecticut Headcount Enrollment by Institution and Sex  
Fall 2005

Public Institutions	Undergraduate				Graduate				First-Professional				Totals		
	Full-Time		Part-Time		Full-Time		Part-Time		Full-Time		Part-Time				
	Men	Women	Men	Women	Men	Women	Men	Women	Men	Women	Men	Women	Men	Women	Total
<b>University of Connecticut</b>															
Storrs	7,207	8,089	449	367	1,592	1,803	1,330	1,455	319	360	112	102	11,009	12,176	23,185
Avery Point	242	207	129	152	0	0	0	0	0	0	0	0	371	359	730
Stamford	353	360	207	321	0	0	0	0	0	0	0	0	560	681	1,241
Tri-Campus	789	823	366	464	0	0	0	0	0	0	0	0	1,155	1,287	2,442
UConn Health Center	0	0	0	0	0	0	0	0	201	279	2	3	203	282	485
<b>Total</b>	<b>8,591</b>	<b>9,479</b>	<b>1,151</b>	<b>1,304</b>	<b>1,592</b>	<b>1,803</b>	<b>1,330</b>	<b>1,455</b>	<b>520</b>	<b>639</b>	<b>114</b>	<b>105</b>	<b>13,298</b>	<b>14,785</b>	<b>28,083</b>
<b>Connecticut State University</b>															
Central	3,648	3,797	1,124	1,109	177	354	752	1,354	0	0	0	0	5,701	6,614	12,315
Eastern	1,693	2,058	403	591	32	63	66	207	0	0	0	0	2,194	2,919	5,113
Southern	2,486	4,211	659	953	268	815	766	2,000	0	0	0	0	4,179	7,979	12,158
Western	1,826	2,176	473	720	34	60	200	418	0	0	0	0	2,533	3,374	5,907
<b>Total</b>	<b>9,653</b>	<b>12,242</b>	<b>2,659</b>	<b>3,373</b>	<b>511</b>	<b>1,292</b>	<b>1,784</b>	<b>3,979</b>	<b>0</b>	<b>0</b>	<b>0</b>	<b>0</b>	<b>14,607</b>	<b>20,886</b>	<b>35,493</b>
<b>Community Colleges</b>															
Asnuntuck	232	294	369	588	0	0	0	0	0	0	0	0	601	882	1,483
Capital	328	599	661	1,985	0	0	0	0	0	0	0	0	989	2,584	3,573
Gateway	783	1,026	1,314	2,616	0	0	0	0	0	0	0	0	2,097	3,642	5,739
Housatonic	570	907	874	2,120	0	0	0	0	0	0	0	0	1,444	3,027	4,471
Manchester	1,330	1,383	1,360	2,062	0	0	0	0	0	0	0	0	2,690	3,445	6,135
Middlesex	379	497	414	996	0	0	0	0	0	0	0	0	793	1,493	2,286
Naugatuck	1,085	1,126	1,195	2,261	0	0	0	0	0	0	0	0	2,280	3,387	5,667
Northwestern	209	318	293	749	0	0	0	0	0	0	0	0	502	1,067	1,569
Norwalk	897	1,118	1,335	2,686	0	0	0	0	0	0	0	0	2,232	3,804	6,036
Quinebaug Valley	257	386	295	776	0	0	0	0	0	0	0	0	552	1,162	1,714
Three Rivers	536	637	839	1,648	0	0	0	0	0	0	0	0	1,375	2,285	3,660
Tunxis	685	803	830	1,576	0	0	0	0	0	0	0	0	1,515	2,379	3,894
<b>Total</b>	<b>7,291</b>	<b>9,094</b>	<b>9,779</b>	<b>20,063</b>	<b>0</b>	<b>0</b>	<b>0</b>	<b>0</b>	<b>0</b>	<b>0</b>	<b>0</b>	<b>0</b>	<b>17,070</b>	<b>29,157</b>	<b>46,227</b>
<b>Total, State Institutions</b>	<b>25,535</b>	<b>30,815</b>	<b>13,589</b>	<b>24,740</b>	<b>2,103</b>	<b>3,095</b>	<b>3,114</b>	<b>5,434</b>	<b>520</b>	<b>639</b>	<b>114</b>	<b>105</b>	<b>44,975</b>	<b>64,828</b>	<b>109,803</b>
U.S. Coast Guard Academy	718	287	0	0	0	0	0	0	0	0	0	0	718	287	1,005
<b>Total, Public Institutions</b>	<b>26,253</b>	<b>31,102</b>	<b>13,589</b>	<b>24,740</b>	<b>2,103</b>	<b>3,095</b>	<b>3,114</b>	<b>5,434</b>	<b>520</b>	<b>639</b>	<b>114</b>	<b>105</b>	<b>45,693</b>	<b>65,115</b>	<b>110,808</b>

TABLE 9, Continued  
Connecticut Headcount Enrollment by Institution and Sex  
Fall 2005

Independent Institutions	Undergraduate				Graduate				First-Professional				Totals		
	Full-Time		Part-Time		Full-Time		Part-Time		Full-Time		Part-Time				
	Men	Women	Men	Women	Men	Women	Men	Women	Men	Women	Men	Women	Men	Women	Total
<b>National Independent</b>															
Connecticut College	729	1,079	22	57	2	4	1	4	0	0	0	0	754	1,144	1,898
Trinity College	1,057	1,052	73	105	5	1	85	92	0	0	0	0	1,220	1,250	2,470
Wesleyan University	1,330	1,420	9	5	98	95	80	168	0	0	0	0	1,517	1,688	3,205
Yale University	2,725	2,625	31	28	2,326	2,378	46	78	610	612	6	18	5,744	5,739	11,483
<b>Total</b>	<b>5,841</b>	<b>6,176</b>	<b>135</b>	<b>195</b>	<b>2,431</b>	<b>2,478</b>	<b>212</b>	<b>342</b>	<b>610</b>	<b>612</b>	<b>6</b>	<b>18</b>	<b>9,235</b>	<b>9,821</b>	<b>19,056</b>
<b>Regional Independent</b>															
Albertus Magnus College	484	1,211	23	64	176	190	17	65	0	0	0	0	700	1,530	2,230
Briarwood College	118	271	50	208	0	0	0	0	0	0	0	0	168	479	647
Fairfield University	1,491	1,994	242	346	70	173	307	550	0	0	0	0	2,110	3,063	5,173
Graduate Institute, The	0	0	0	0	53	172	0	0	0	0	0	0	53	172	225
Hartford Seminary	0	0	0	0	10	23	53	83	0	0	0	0	63	106	169
Holy Apostles College and Seminary	6	3	24	8	13	0	99	61	40	0	0	0	182	72	254
LymeAcademy College of Fine Arts	41	39	20	48	1	0	1	3	0	0	0	0	63	90	153
Mitchell College	327	317	30	53	0	0	0	0	0	0	0	0	357	370	727
Paier College of Art	79	112	29	57	0	0	0	0	0	0	0	0	108	169	277
Post University	300	364	135	302	0	0	0	0	0	0	0	0	435	666	1,101
Quinnipiac University	2,039	3,247	159	261	164	391	184	304	194	205	70	75	2,810	4,483	7,293
Rensselaer at Hartford	0	0	0	0	18	14	514	160	0	0	0	0	532	174	706
Sacred Heart University	1,309	1,935	277	583	137	356	316	647	0	0	0	0	2,039	3,521	5,560
St. Basil College	18	0	2	0	0	0	0	0	0	0	0	0	20	0	20
St. Joseph College	2	869	9	279	13	130	63	493	0	0	0	0	87	1,771	1,858
University of Bridgeport	502	745	105	324	434	452	341	522	125	71	3	2	1,510	2,116	3,626
University of Hartford	2,345	2,312	368	567	210	358	433	667	0	0	0	0	3,356	3,904	7,260
University of New Haven	1,148	1,153	273	214	419	468	397	394	0	0	0	0	2,237	2,229	4,466
<b>Total</b>	<b>10,209</b>	<b>14,572</b>	<b>1,746</b>	<b>3,314</b>	<b>1,718</b>	<b>2,727</b>	<b>2,725</b>	<b>3,949</b>	<b>359</b>	<b>276</b>	<b>73</b>	<b>77</b>	<b>16,830</b>	<b>24,915</b>	<b>41,745</b>
<b>Two-Year Independent</b>															
Gibbs College	273	251	190	236	0	0	0	0	0	0	0	0	463	487	950
Goodwin College	18	114	114	973	0	0	0	0	0	0	0	0	132	1,087	1,219
Int'l College of Hospitality Management	18	22	0	0	0	0	0	0	0	0	0	0	18	22	40
Legion of Christ College of Humanities	25	0	0	0	0	0	0	0	0	0	0	0	25	0	25
St. Vincent's College	13	64	47	290	0	0	0	0	0	0	0	0	60	354	414
<b>Total</b>	<b>347</b>	<b>451</b>	<b>351</b>	<b>1,499</b>	<b>0</b>	<b>0</b>	<b>0</b>	<b>0</b>	<b>0</b>	<b>0</b>	<b>0</b>	<b>0</b>	<b>698</b>	<b>1,950</b>	<b>2,648</b>
<b>Total, Independent Institutions</b>	<b>16,397</b>	<b>21,199</b>	<b>2,232</b>	<b>5,008</b>	<b>4,149</b>	<b>5,205</b>	<b>2,937</b>	<b>4,291</b>	<b>969</b>	<b>888</b>	<b>79</b>	<b>95</b>	<b>26,763</b>	<b>36,686</b>	<b>63,449</b>
<b>Total, All Institutions</b>	<b>42,650</b>	<b>52,301</b>	<b>15,821</b>	<b>29,748</b>	<b>6,252</b>	<b>8,300</b>	<b>6,051</b>	<b>9,725</b>	<b>1,489</b>	<b>1,527</b>	<b>193</b>	<b>200</b>	<b>72,456</b>	<b>101,801</b>	<b>174,257</b>

TABLE 10  
Enrollment by Sex in Connecticut  
Higher Education Institutions  
Selected Years

Year	Men			Women			Percent Women
	Full-Time	Part-Time	Total	Full-Time	Part-Time	Total	

Total Enrollment

<b>1960</b>	NA	NA	NA	NA	NA	NA	
<b>1970</b>	50,115	22,315 *	72,430 *	32,245	16,759 *	49,004 *	40.4%
<b>1980</b>	43,439	31,776	75,215	43,658	41,179	84,837	53.0%
<b>1990</b>	41,818	31,672	73,490	44,338	50,930	95,268	56.5%
<b>2005</b>	50,391	22,065	72,456	62,128	39,673	101,801	58.4%

Undergraduate Enrollment

<b>1960</b>	18,275	NA	NA	9,778	NA	NA	34.9%
<b>1970</b>	43,997	13,780 *	57,777 *	29,853	8,892 *	38,745 *	40.1%
<b>1980</b>	37,815	21,926	59,741	39,171	30,550	69,721	53.9%
<b>1990</b>	35,218	22,441	57,659	38,361	37,650	76,011	56.9%
<b>2005</b>	42,650	15,821	58,471	52,301	29,748	82,049	58.4%

Graduate/First-Professional

<b>1960</b>	NA	NA	NA	NA	NA	NA	
<b>1970</b>	6,118	8,535	14,653	2,392	7,867	10,259	41.2%
<b>1980</b>	5,624	9,850	15,474	4,487	10,629	15,116	49.4%
<b>1990</b>	6,600	9,231	15,831	5,977	13,280	19,257	54.9%
<b>2005</b>	7,741	6,244	13,985	9,827	9,925	19,752	58.5%

\*Excludes 5,246 unclassified students unassignable by sex

TABLE 10A  
 Connecticut Undergraduate Enrollment Summary  
 by Age Group  
**2000-2005**

	<b>2000</b>	<b>2001</b>	<b>2002</b>	<b>2003</b>	<b>2004</b>	<b>2005</b>
Number Under 25	86,040	91,936	96,491	98,842	102,483	105,257
Number 25 and Over	38,393	38,676	38,155	36,776	35,866	35,083
Percent 25 and Over	30.9%	29.6%	28.3%	27.1%	25.9%	25.0%

TABLE 11  
Connecticut Undergraduate Enrollment Summary by Type of Institution  
2000-2005

	MEN						WOMEN						TOTAL					
	2000	2001	2002	2003	2004	2005	2000	2001	2002	2003	2004	2005	2000	2001	2002	2003	2004	2005
<u>University of Connecticut</u>																		
FULL-TIME	6,692	7,169	7,541	7,916	8,355	8,591	7,533	7,922	8,455	8,816	9,179	9,479	14,225	15,091	15,996	16,732	17,534	18,070
PART-TIME	1,224	1,272	1,244	1,232	1,265	1,151	1,232	1,267	1,422	1,323	1,352	1,304	2,456	2,539	2,666	2,555	2,617	2,455
% PART-TIME	15.5%	15.1%	14.2%	13.5%	13.1%	11.8%	14.1%	13.8%	14.4%	13.0%	12.8%	12.1%	14.7%	14.4%	14.3%	13.2%	13.0%	12.0%
Under 25	6,946	7,483	7,896	8,281	8,734	8,862	7,807	8,213	8,780	9,092	9,488	9,745	14,753	15,696	16,676	17,373	18,222	18,607
25 and Over	970	958	889	867	878	877	958	976	1,097	1,047	1,029	1,030	1,928	1,934	1,986	1,914	1,907	1,907
% Over 25	12.3%	11.3%	10.1%	9.5%	9.1%	9.0%	10.9%	10.6%	11.1%	10.3%	9.8%	9.6%	11.6%	11.0%	10.6%	9.9%	9.5%	9.3%
Total Headcount F.T.E.	7,916	8,441	8,785	9,148	9,620	9,742	8,765	9,189	9,877	10,139	10,531	10,783	16,681	17,630	18,662	19,287	20,151	20,525
													14,656	15,586	16,538	17,369	18,231	18,706
<u>Connecticut State University</u>																		
FULL-TIME	8,732	8,999	9,219	9,138	9,444	9,653	10,450	11,089	11,351	11,422	11,991	12,242	19,182	20,088	20,570	20,560	21,435	21,895
PART-TIME	3,519	3,424	3,360	3,094	2,922	2,659	4,524	4,453	4,298	3,822	3,418	3,373	8,043	7,877	7,658	6,916	6,340	6,032
% PART-TIME	28.7%	27.6%	26.7%	25.3%	23.6%	21.6%	30.2%	28.7%	27.5%	25.1%	22.2%	21.6%	29.5%	28.2%	27.1%	25.2%	22.8%	21.6%
Under 25	9,328	9,589	9,916	9,751	10,040	10,163	10,995	11,561	11,914	11,895	12,289	12,604	20,323	21,150	21,830	21,646	22,329	22,767
25 and Over	2,914	2,709	2,619	2,454	2,312	2,141	3,961	3,830	3,685	3,326	3,102	3,001	6,875	6,539	6,304	5,780	5,414	5,142
% Over 25	23.8%	22.0%	20.9%	20.1%	18.7%	17.4%	26.5%	24.9%	23.6%	21.9%	20.2%	19.2%	25.3%	23.6%	22.4%	21.1%	19.5%	18.4%
Total Headcount F.T.E.	12,251	12,423	12,579	12,232	12,366	12,312	14,974	15,542	15,649	15,244	15,409	15,615	27,225	27,965	28,228	27,476	27,775	27,927
													20,849	21,847	22,378	22,223	22,931	23,295
<u>Community Colleges</u>																		
FULL-TIME	5,036	5,436	6,114	6,453	7,036	7,291	5,851	6,608	7,601	8,016	8,762	9,094	10,887	12,044	13,715	14,469	15,798	16,385
PART-TIME	11,131	11,049	11,066	10,392	9,951	9,779	18,807	19,549	20,088	20,299	19,994	20,063	29,938	30,598	31,154	30,691	29,945	29,842
% PART-TIME	68.9%	67.0%	64.4%	61.7%	58.6%	57.3%	76.3%	74.7%	72.5%	71.7%	69.5%	68.8%	73.3%	71.8%	69.4%	68.0%	65.5%	64.6%
Under 25	8,272	8,758	9,700	10,134	10,744	10,996	10,414	11,562	12,629	13,323	14,044	14,499	18,686	20,320	22,329	23,457	24,788	25,495
25 and Over	7,873	7,707	7,473	6,706	6,243	6,073	14,200	14,563	15,051	14,987	14,709	14,656	22,073	22,270	22,524	21,693	20,952	20,729
% Over 25	48.8%	46.8%	43.5%	39.8%	36.8%	35.6%	57.7%	55.7%	54.4%	52.9%	51.2%	50.3%	54.2%	52.3%	50.2%	48.0%	45.8%	44.8%
Total Headcount F.T.E.	16,167	16,485	17,180	16,845	16,987	17,070	24,658	26,157	27,689	28,315	28,756	29,157	40,825	42,642	44,869	45,160	45,743	46,227
													20,258	21,572	23,487	24,158	25,212	25,744

TABLE 11, Continued  
Connecticut Undergraduate Enrollment Summary by Type of Institution  
**2000-2005**

	MEN						WOMEN						TOTAL					
	2000	2001	2002	2003	2004	2005	2000	2001	2002	2003	2004	2005	2000	2001	2002	2003	2004	2005
<u>National Independent</u>																		
FULL-TIME	5,689	5,640	5,625	5,631	5,721	5,841	5,965	6,026	6,074	6,033	6,092	6,176	11,654	11,666	11,699	11,664	11,813	12,017
PART-TIME	126	119	139	133	156	135	207	202	247	229	225	195	333	321	386	362	381	330
% PART-TIME	2.2%	2.1%	2.4%	2.3%	2.7%	2.3%	3.4%	3.2%	3.9%	3.7%	3.6%	3.1%	2.8%	2.7%	3.2%	3.0%	3.1%	2.7%
Under 25	4,698	5,661	5,655	5,663	5,750	5,861	5,009	6,030	6,098	6,073	6,120	6,218	9,707	11,691	11,753	11,736	11,870	12,079
25 and Over	66	92	102	92	117	108	114	195	222	187	193	152	180	287	324	279	310	260
% Over 25	1.4%	1.6%	1.8%	1.6%	2.0%	1.8%	2.2%	3.1%	3.5%	3.0%	3.1%	2.4%	1.8%	2.4%	2.7%	2.3%	2.5%	2.1%
Total Headcount F.T.E.	5,815	4,437	5,764	5,764	5,877	5,976	6,172	7,550	6,321	6,262	6,317	6,371	11,987	11,987	12,085	12,026	12,194	12,347
													11,490	11,516	11,672	11,892	11,937	11,990
<u>Regional Independent</u>																		
FULL-TIME	8,871	9,162	9,399	9,647	9,763	10,209	11,937	12,398	12,940	13,545	13,653	14,572	20,808	21,560	22,339	23,192	23,416	24,781
PART-TIME	2,631	2,428	2,253	1,943	1,733	1,746	4,334	4,228	3,800	3,422	3,330	3,314	6,965	6,656	6,053	5,365	5,063	5,060
% PART-TIME	22.9%	20.9%	19.3%	16.8%	15.1%	14.6%	26.6%	25.4%	22.7%	20.2%	19.6%	18.5%	25.1%	23.6%	21.3%	18.8%	17.8%	17.0%
Under 25	8,948	9,192	9,556	9,644	9,742	10,232	12,062	12,240	12,840	13,180	13,305	13,915	21,010	21,432	22,396	22,824	23,047	24,147
25 and Over	2,445	2,346	2,113	1,962	1,839	1,682	4,365	4,595	4,202	4,004	4,039	3,884	6,810	6,941	6,315	5,966	5,878	5,566
% Over 25	21.5%	20.3%	18.1%	16.9%	15.9%	14.1%	26.6%	27.3%	24.7%	23.3%	23.3%	21.8%	24.5%	24.5%	22.0%	20.7%	20.3%	18.7%
Total Headcount F.T.E.	11,576	11,690	11,780	11,745	11,649	11,955	16,680	17,037	17,178	17,400	17,467	17,886	27,773	28,216	28,392	28,557	28,479	29,841
													23,819	24,323	24,812	25,822	25,805	26,911
<u>Two-Year Independent</u>																		
FULL-TIME	520	511	406	685	606	347	824	921	772	1,030	1,022	451	1,344	1,432	1,178	1,715	1,628	798
PART-TIME	61	86	225	240	319	351	395	449	620	864	1,337	1,499	456	535	845	1,104	1,656	1,850
% PART-TIME	10.5%	14.4%	35.7%	25.9%	34.5%	50.3%	32.4%	32.8%	44.5%	45.6%	56.7%	76.9%	25.3%	27.2%	41.8%	39.2%	50.4%	69.9%
Under 25	253	262	220	261	423	371	431	490	337	564	810	787	684	752	557	825	1,233	1,158
25 and Over	183	234	210	361	341	319	344	469	490	781	1,064	1,159	527	703	700	1,142	1,405	1,478
% Over 25	42.0%	47.2%	48.8%	58.0%	44.6%	46.2%	44.4%	48.9%	59.3%	58.1%	56.8%	59.6%	43.5%	48.3%	55.7%	58.1%	53.3%	56.1%
Total Headcount F.T.E.	472	497	503	770	772	698	810	959	954	1,461	1,875	1,950	1,800	1,967	2,023	2,819	3,284	2,648
													1,163	1,270	1,232	1,299	2,064	1,911